

AGENDA FOR BOARD OF DIRECTORS
AUBURN SCHOOL DISTRICT NO. 408
Monday, October 22, 2012

- I. TIME AND PLACE
 - 1. 7 p.m. at the James P. Fugate Administration Building
- II. ROLL CALL
 - 1. Roll call of board members
- III. PLEDGE OF ALLEGIANCE
- IV. AUDIENCE PARTICIPATION
 - 1. Written communications
 - 2. Scheduled communications
 - a. Kathyryn Chociejj, MSW student at UW-Tacoma, will address the board and provide testimony for policy issue on anti-discrimination laws.
 - 3. Unscheduled communications
 - 4. Community groups and organizations
- V. LEGISLATIVE UPDATE
- VI. STUDENT AND STAFF RECOGNITION
 - 1. Student recognition
 - 2. Staff recognition
 - 3. Recognition of retirees
- VII. STUDENT PARTICIPATION
 - 1. Evergreen Heights Elementary School PTA report
 - 2. Activity/Athletic Report
 - 3. Request for travel
- VIII. SCHOOL PROGRAMS AND STUDENT ACHIEVEMENT
 - 1. 2012-13 Evergreen Heights Elementary School PLC presentation
 - 2. 2011-12 state assessment results
 - 3. Dashboard update for second semester
 - 4. Approval of interdistrict agreements providing services to disabled students
- IX. PERSONNEL
 - 1. Certificated and classified personnel report
 - 2. American Education Week proclamation

3. Requests for travel

X. BUILDING PROGRAM

1. Alpac Elementary School improvements project
2. Gildo Rey Elementary School improvements project
3. Work in progress report

XI. FINANCE

1. Vouchers
2. Financial statements
3. Request for authorization to surplus equipment and furniture

XII. DIRECTORS

1. Approval of minutes
2. RTT grant
3. Second reading of revised policy
4. December 24 board meeting
5. Discussion
6. Executive session

LEGISLATIVE UPDATE

The board will discuss legislative items.

STUDENT AND STAFF RECOGNITION

1. Student Recognition

The Auburn School District Board of Directors will recognize Aurelio Payan, an eighth grade student at Mt. Baker Middle School, for being an outstanding student.

Aurelio's hard work, positive attitude, and collaborative spirit bubbles over in the classroom. Last year he was moved to the highly capable honors program at Mt. Baker. He is a motivated student and exceeds expectations.

Aurelio is also an active member of jazz band and volunteers in many different ways at school. In fact, just the other day Aurelio asked one of his teachers if he could help grade the extra tests to challenge himself to learn the content even better. According to Aurelio's teacher, "He always participates and supports his classmates and his work is always exceptional. He's just a great kid. I wish I had 100 just like him!"

PE teacher Mr. King is greeted every morning by Aurelio with a, "Hello, Mr. King." Aurelio's attentiveness to students and staff, and dedication to his education and personal growth, will help launch him into his future. "I see him really going places," says Mr. King.

2. Staff Recognition

The Auburn School District Board of Directors will recognize Keri Jordan, resource room teacher at Washington Elementary School, for her outstanding service.

Keri Jordan has invested the last 10 years of her teaching career to the children of Washington. Keri provides individualized instruction for children who qualify for special education services, including instruction in reading, writing, and math.

Keri guides students academically, socially, and emotionally to encourage independence and self-confidence. Ultimately, she aims to build a solid foundation for each student and close the achievement gap so her students can return to the regular classroom. According to Keri, "We individualize instruction for each student and often work in small groups to fill in the gaps so students catch up to grade level."

In fact, Keri recently shared with three of her students that they passed the fourth grade MSP reading test—a not-so-easy feat as all three students had struggled with vocabulary and comprehension for years. "It's exciting to share with students that they can do anything when they put their mind to it," smiles Keri.

Keri's students walk away with more than a solid foundation for lifelong learning. They also acquire a better self-image. Keri encourages students to repeat positive affirmations to themselves throughout the school day such as, 'I can do anything I put my mind to' and 'I am smart.'

Keri's dedication in the classroom extends beyond the classroom. She participates in Right Response Training and teacher inservice opportunities.

Keri graduated from the University of Washington Tacoma with a bachelors in psychology, masters in special education and teaching credential. She pursued a teaching career after volunteering in a 5th grade classroom during her undergraduate studies. "What's most rewarding is seeing children make progress so they are prepared to move into middle school and beyond," says Keri.

3. Recognition of Retirees

This evening, the board will recognize the following Auburn School District retirees:

Carol Parker
Robin Logan
Marjorie Eastman

STUDENT PARTICIPATION

1. Evergreen Heights Elementary School PTA Report

Anne Gayman, Evergreen Heights Elementary School principal, will introduce Kaylyn Valdez and Sheila McLaughlin, PTA president and vice-president, respectively, who will present the Evergreen Heights Elementary School PTA report and answer questions from the board.

2. Activity/Athletic Report–Auburn Riverside High School Drama Program

Frank Ramirez, Auburn Riverside High School assistant principal, will introduce Karla Seman, Auburn Riverside High School drama teacher, who will introduce Lindsay Holzworth, Madeline Dickson, Nicole Coppola, Summer Ramirez, Zane Nuttall, Rizelle Rosales, Jocelyn Mitchell, and Alexandria Baker, students, who will present the Auburn Riverside High School drama program and answer questions from the board.

3. Request for Travel

a. Twenty Auburn High School students, 20 Auburn Mountainview High School students, and eight Auburn Riverside High School students request permission to travel to Seattle, Thursday to Sunday, November 15-18. The purpose of the trip is to attend the DECA Western Region Leadership Conference. Lodging will be at the Westin Hotel, meals will be at local restaurants, and travel will be by school bus. Students will pay for their meals and all other expenses will be paid by ASB funds. Lori Jacobs and Sharon Englehart, Auburn High School teachers; Jana Thomas, Derek Enz and Kim Enz, Auburn Mountainview High School teachers; and Doug Aubert, Auburn Riverside High School teacher, request permission to accompany the students. Substitutes will be needed for two days.

Recommendation:

That the above trip be approved as requested.

SCHOOL PROGRAMS AND STUDENT ACHIEVEMENT

1. 2012-13 Evergreen Heights Elementary School PLC Presentation

Louanne Decker, associate superintendent of K-12 school programs, will introduce Anne Gayman, who will introduce Staci Erickson and Alisa Louie, Evergreen Heights staff members, who will give a brief overview of how the Professional Learning Community model has been utilized to increase student achievement at Evergreen Heights Elementary School, share a PowerPoint presentation, and answer questions from the board. This presentation aligns with the 2009-12 district strategic improvement plan, Goal 1, objectives 1.a.1, 1.a.2., 1.a.3 and 1.a.4.

2. 2011-12 State Assessment Results

Rodney Luke, associate superintendent of K-12 student learning and technology, will introduce Julie DeBolt, assistant director of assessment and NCLB, who will provide the board an overview of the spring 2012 state assessment results for the Auburn School District and review the new reporting format, Annual Measureable Objectives (AMO). This presentation aligns with the 2009-2012 district strategic improvement plan, Goal 1: student achievement and the 2012-13 stated district goals, Standard II Set and communicate high expectations for student learning with clear goals and plans for meeting those expectations and celebrate success.

3. Dashboard Update for Second Semester 2011-12 Ninth Grade Credits Earned

Julie DeBolt will provide the board with an update of the 2011-12 second semester ninth grade student credits earned dashboard and answer questions. The dashboard was updated to reflect additional credits earned toward graduation since June, 2012. This presentation aligns with the Auburn School Board 2011-12 school year stated district goals, Standard IV "Hold School District Accountable for Meeting Student Learning Expectations;" Goal 6 "High Schools will increase credit attainment at 9th grade 10%."

4. Approval of Interdistrict Agreements Providing Services to Disabled Students--Auburn Students to Other Districts/Agencies

The district contracts annually with area school districts/agencies for educational programs to disabled students for which programs are not available in Auburn. Permission is requested to contract with the Relife School for services, as needed.

Recommendation:

That the superintendent/designee be authorized to sign the contract as outlined.

Professional Learning Communities

Evergreen Heights

2012-2013



PLC's

Where Have We Been ?

- Implementing PLC's for 4 years
 - Based on:
 - Learning by Doing
 - Seven Strategies of Assessment *for* Learning
- National Title I Distinguished Schools (2011)
- New ESEA Reward School in two areas (2012)
 - Highest Performing
 - High-Progress

Where Are We Now?

- Vertically aligning our programs and assessments
 - 2 Inservice Days (June and August) to create common reading goals. The work is continued at PLCs.
- Refining our interventions
 - Expanding our schedule to include Walk to Math and Walk to Read at ALL grade levels
 - Building capacity through teacher/para-educator co-teaching

Where Are We Now?

- Transitioning to Common Core
 - Grades K-2 (2012-2013)
 - Staff Training
- We are continuing with professional development
 - GLAD
 - Common vocabulary
 - Creation of building-wide learning expectations



ENRICHMENT

Answering PLC Question #4

How can we extend and enrich learning for students who have demonstrated proficiency?



Where The Future Takes Us

2012-13

- Continuing vertical alignment
- ATLA teacher training
 - Currently in year 3 – 5th and 6th teachers involved
- Staff peer coaching
- Fully Revised SIP
 - Based on Visual Learning
 - Student self- assessment
 - Using research and best practice
 - Implementing strategies
 - Use 2012 CEE data





AMO

The new AYP



Comparing AYP to AMO

AYP

- **N=30**
- Grade bands for school and districts 3-5, 6-8, and 10
- Reading, Math measures proficiency and participation
- Other indicator
- **6** Race cells, 3 special populations

AMO

- **N=20**
- Grade bands for schools, but collapsed **3-10 for districts**
- Reading, Math measures proficiency and participation
- Other indicator
- **8** Race/Ethnicity cells, 3 special populations

Comparing AYP to AMO

AYP

- Each school has **37** potential trigger cells
- Each district has **111** potential trigger cells

AMO

- Each school has **45** potential trigger cells
- Each district has **45** potential trigger cells

Comparing AYP to AMO

AYP

- Each cell's performance compared to ***uniform bar***
- ***Target changes every 3 years***
- Margin of error applied
- Simple formula for ***Met/Not Met***

AMO

- Each cell's performance compared to ***individual targets***
- ***Target changes every year***
- No Margin of error applied
- Individual targets for ***Below or On/above***

Formula for new AMO

Step 1: Calculate increase to reduce gap by half

$= (100\% - \% \text{Base}) / 2 = \text{Increase needed to make Target 2017}$

Step 2: Determine 2017 Target

$= \text{Increase} + \text{Base} = \text{2017 Target}$

Step 1: $(100\% - 80\%) / 2 = 10$

Step 2: $10 + 80 = 90\% = \text{2017 Target}$

Step 3: Determine Annual Increment

$\text{2017 Target} / 6 = \text{Annual Increment}$

Step 4: Determine 2012 Target

$\text{Base} + \text{Annual Increment} = \text{2012 Target}$

Step 3: $10 / 6 = 1.6666 \text{ Annual Increment}$

Step 4: $80 + 1.66666 = 81.7\% = \text{2012 Target}$



Our Results

Auburn AMO results

WA AMO results

Purpose of Waiver

This is the right decision for Washington State. Over **1176** schools and **113** districts across our state were identified as “in improvement” based on 2010-11 state assessments. ***And, by 2014, nearly every school and district would be identified as in improvement.*** So we know our current AYP system doesn’t work.

We need a new way to measure progress and provide resources to support our work. This request gives us the opportunity to set new annual learning targets and frees up to \$58 million across our state to address the needs of struggling students and schools. It provides the flexibility Washington needs to ensure ALL students graduate with college- and career-ready skills.

Randy Dorn
Superintendent of Public Instruction
Webinar July 2012



In 2012, **272 of 294** districts
failed to meet their AMO
targets.

**before state applied appeals*

Purpose of Waiver

- Race to the Top
- Lessen the “failing school” or “failing district” label

Year	#WA Schools Making AYP
2006	1735
2007	1384
2009	894
2010	977
2011	763
2012	332* before state appeals

2011 AYP for Washington

- Met = 71 cells
- Not Met = 40 cells
- N<Required = 0

% Met = 64.0%

2012 AMO for Washington

- Met = 28 cells
- Not Met = 17 cells
- N<Required = 0

% Met = 62.2%

2011 AYP Auburn Schools

- Met = 65 cells
- Not Met = 18 cells (0 for elementary: where our title money goes)
- N<Required = 28

% Met = 78.3%

2012 AMO Auburn Schools

- Met = 28 cells
- Not Met = 17 cells
- N<Required = 0

% Met = 62.2%

AMO trigger cells

28 cells met, 17 not met

Auburn School District 2011-2012 AMO Report Card Combined Grades 3-8 and 10

	Reading			Math			Reading	Math	Other Indicator
Student Group	Proficiency	Target	Met Target	Proficiency	Target	Met Target	Met 95% Participation Target	Met 95% Participation Target	
All	72.6	73.1	Below	63.1	65.3	Below	On/Above	On/Above	Below
American Indian	49.6	58.9	Below	33.6	51.2	Below	On/Above	On/Above	
Asian	80.4	78.8	On/Above	74.4	75.9	Below	On/Above	On/Above	
Pacific Islander	51.6	45.5	On/Above	42.7	40.5	On/Above	On/Above	On/Above	
Black	58.8	64.2	Below	44.2	45.4	Below	On/Above	On/Above	
Hispanic	62.0	63.3	Below	50.4	53.4	Below	On/Above	On/Above	
White	79.3	78.6	On/Above	71.0	72.3	Below	On/Above	On/Above	
Two or More Races	72.7	73.9	Below	63.4	64.9	Below	On/Above	On/Above	
Limited English	45.2	38.3	On/Above	35.3	35.0	On/Above	On/Above	On/Above	
Special Education	28.5	32.4	Below	24.3	29.1	Below	On/Above	On/Above	
Low Income	64.1	64.2	Below	52.9	55.7	Below	On/Above	On/Above	

Sanctions

ESEA Waiver eliminates Steps in Improvement for schools and districts. AMO are simply reported as On/Above or Below. Priority and Focus Schools are based on performance and not connected to AMO.

OSPI is required to create a list of PLA schools based on PLA calculations and potentially recommend Required Action Districts to the State Board of Education. No RADs have been identified because there is no federal funding.

**Auburn School District
Grade 9 Credits Earned
2011-2012 Recapture (October) Report**

		Index	Grade 9 Earned Credits						
			Count				Percent		
			AR	MR	OT	Total	At Risk	Moderate Risk	On Target
Am Indian	2011-2012 S2	2.38	2	4	7	13	15.38%	30.77%	53.85%
	2012 S2 cohort	2.50	1	4	7	12	8.33%	33.33%	58.33%
	October 2012 Recap	2.50	1	4	7	12	8.33%	33.33%	58.33%
Asian	2011-2012 S2	2.73	9	11	87	107	8.41%	10.28%	81.31%
	2012 S2 cohort	2.75	9	8	87	104	8.65%	7.69%	83.65%
	October 2012 Recap	2.76	8	9	87	104	7.69%	8.65%	83.65%
Black	2011-2012 S2	2.27	18	22	39	79	22.78%	27.85%	49.37%
	2012 S2 cohort	2.28	16	21	37	74	21.62%	28.38%	50.00%
	October 2012 Recap	2.31	15	21	38	74	20.27%	28.38%	51.35%
Hispanic	2011-2012 S2	2.27	50	65	112	227	22.03%	28.63%	49.34%
	2012 S2 cohort	2.32	40	60	106	206	19.42%	29.13%	51.46%
	October 2012 Recap	2.34	37	62	107	206	17.96%	30.10%	51.94%
Multiracial	2011-2012 S2	2.35	15	26	45	86	17.44%	30.23%	52.33%
	2012 S2 cohort	2.37	14	21	43	78	17.95%	26.92%	55.13%
	October 2012 Recap	2.38	13	22	43	78	16.67%	28.21%	55.13%
Pacific Islander	2011-2012 S2	1.94	12	10	10	32	37.50%	31.25%	31.25%
	2012 S2 cohort	1.96	10	9	9	28	35.71%	32.14%	32.14%
	October 2012 Recap	1.96	10	9	9	28	35.71%	32.14%	32.14%
White	2011-2012 S2	2.64	60	121	485	666	9.01%	18.17%	72.82%
	2012 S2 cohort	2.66	54	108	477	639	8.45%	16.90%	74.65%
	October 2012 Recap	2.66	53	109	477	639	8.29%	17.06%	74.65%
ALL Students	2011-2012 S2	2.51	166	259	785	1210	13.72%	21.40%	64.88%
	2012 S2 cohort	2.55	144	231	766	1141	12.62%	20.25%	67.13%
	October 2012 Recap	2.55	137	236	768	1141	12.01%	20.68%	67.31%

S1 AR= 0-1.9 credits, MR= 2.0-2.9 credits, OT= 3+credits

S2 AR=0-3.9 credits, MR=4.0-5.9 credits, OT=6+ credits

Demographis of students gaining credit	
Am Indian	1
Asian	3
Black	4
Hispanic	11
MultiRacial	6
White	9

June 2012 to October 2012 Credit Risk			
Fall Recapture Risk			
Spring Risk	At Risk=6	Moderate Risk=15	On Target=6
At Risk=13	6	7	
Moderate Risk=15		13	2
On Target=6			6

2.98% of all Freshman (N=34) in the class of 2015 gained .5 to 1.0 credit from June 2012 to October 2012.

1. Certificated and Classified Personnel Report

Recommendation: That the board approve the attached report.

Recommendation: That the board recognize the proclamation for American Education Week.

Recommendation: That the above trips be approved as requested.

PERSONNEL--CERTIFICATED

Curriculum/Non-Curriculum hours

21st century grant

- | | |
|-----------------------|---|
| 1 . DeGroot, Karen | 200 hour(s) @ hourly rate of pay effective
10/1/2012 |
| 2 . Hoskin, David | 60 hour(s) @ hourly rate of pay effective
10/1/2012 |
| 3 . McKinley, Michael | 60 hour(s) @ hourly rate of pay effective
10/1/2012 |

Afterschool music program

- | | |
|---------------------|--|
| 1 . Churchill, Teri | 6 hour(s) @ hourly rate of pay effective
10/15/2012 |
|---------------------|--|

Balanced math and literacy model

- | | |
|----------------|---|
| 1 . Horn, Lisa | 18 hour(s) @ hourly rate of pay effective
9/5/2012 |
|----------------|---|

Balanced math model

- | | |
|-----------------------|---|
| 1 . Jeffreys, Brendan | 18 hour(s) @ hourly rate of pay effective
5/1/2012 |
| 2 . Jeffreys, Brendan | As needed effective 9/5/2012
Stipend \$500 |

Behavior Cadre

- | | |
|---------------------|---|
| 1 . Beers, Timothy | 7.5 hour(s) @ hourly rate of pay effective
9/24/2012 |
| 2 . Dixon, Leianna | 7.5 hour(s) @ hourly rate of pay effective
9/24/2012 |
| 3 . Durnin, Shannon | 7.5 hour(s) @ hourly rate of pay effective
9/24/2012 |
| 4 . George, Nicolas | 7.5 hour(s) @ hourly rate of pay effective
9/24/2012 |
| 5 . Greco, Gina | 7.5 hour(s) @ hourly rate of pay effective
9/24/2012 |
| 6 . Jacobsen, Jila | 7.5 hour(s) @ hourly rate of pay effective
9/24/2012 |

- 7 . Kelly Kennedy, Erika 7.5 hour(s) @ hourly rate of pay effective 9/24/2012
- 8 . Kim, Mira 7.5 hour(s) @ hourly rate of pay effective 9/24/2012
- 9 . Noesen, Sarah 7.5 hour(s) @ hourly rate of pay effective 9/24/2012
- 10 . Raines, Elizabeth 7.5 hour(s) @ hourly rate of pay effective 9/24/2012
- 11 . Watkins, Kanika 7.5 hour(s) @ hourly rate of pay effective 9/24/2012

Building events

- 1 . Stickley, Emily 10.5 hour(s) @ hourly rate of pay effective 8/28/2012

Case management overload

- 1 . Blackburn, Michael 40 hour(s) @ hourly rate of pay effective 9/15/2012
- 2 . Campbell, Julie 40 hour(s) @ hourly rate of pay effective 9/15/2012
- 3 . Dupuy, Andrea 40 hour(s) @ hourly rate of pay effective 9/15/2012
- 4 . Frazier, Leslie 40 hour(s) @ hourly rate of pay effective 9/15/2012
- 5 . Hughes, Sharon 40 hour(s) @ hourly rate of pay effective 9/15/2012
- 6 . Jackowski, Erin 40 hour(s) @ hourly rate of pay effective 9/15/2012
- 7 . Jackson, Shaaron 40 hour(s) @ hourly rate of pay effective 9/15/2012
- 8 . Jacobsma, Amanda 40 hour(s) @ hourly rate of pay effective 9/15/2012
- 9 . Johnson, Shawn 40 hour(s) @ hourly rate of pay effective 9/15/2012

- | | |
|----------------------------|--|
| 10 . Junell, Katarina | 40 hour(s) @ hourly rate of pay effective 9/15/2012 |
| 11 . Kihara, Alison | 40 hour(s) @ hourly rate of pay effective 9/15/2012 |
| 12 . Kinkela, Merilee | 40 hour(s) @ hourly rate of pay effective 9/15/2012 |
| 13 . Laskey, Samantha | 40 hour(s) @ hourly rate of pay effective 9/15/2012 |
| 14 . Leitzke, Tamara | 100 hour(s) @ hourly rate of pay effective 9/15/2012 |
| 15 . Mandler, Connie | 40 hour(s) @ hourly rate of pay effective 9/15/2012 |
| 16 . Marerro Burgos, Zayra | 40 hour(s) @ hourly rate of pay effective 9/15/2012 |
| 17 . Noesen, Sarah | 40 hour(s) @ hourly rate of pay effective 9/15/2012 |
| 18 . Novotney, Sarah | 40 hour(s) @ hourly rate of pay effective 9/15/2012 |
| 19 . Quraishi, Areesa | 40 hour(s) @ hourly rate of pay effective 9/15/2012 |
| 20 . Rupp, Teri | 60 hour(s) @ hourly rate of pay effective 9/15/2012 |
| 21 . Zaldivar, Melisa | 40 hour(s) @ hourly rate of pay effective 9/15/2012 |

Certificated Interview Team

- | | |
|---------------------------|---|
| 1 . Bishop, Alie | 2.5 hour(s) @ hourly rate of pay effective 10/12/2012 |
| 2 . Christiansen, Stephen | 1.5 hour(s) @ hourly rate of pay effective 10/5/2012 |

Discipline school

- | | |
|----------------------|--|
| 1 . Ainsworth, Karen | 4.5 hour(s) @ hourly rate of pay effective 10/1/2012 |
|----------------------|--|

2 . Ammons, Tori	20 hour(s) @ hourly rate of pay effective 10/1/2012
3 . Bendt, Heidi	9.5 hour(s) @ hourly rate of pay effective 10/1/2012
4 . Brown, Karen	6 hour(s) @ hourly rate of pay effective 10/1/2012
5 . Davidson, Cary	4 hour(s) @ hourly rate of pay effective 10/1/2012
6 . Gonzales, Douglas	4 hour(s) @ hourly rate of pay effective 10/1/2012
7 . Grubb, Regina	1.5 hour(s) @ hourly rate of pay effective 10/1/2012
8 . Hostetter, Jayme	3.5 hour(s) @ hourly rate of pay effective 10/1/2012
9 . McCausland, Angela	2.5 hour(s) @ hourly rate of pay effective 10/1/2012
10 . Price, Jon	9 hour(s) @ hourly rate of pay effective 10/1/2012
11 . Tapp, Nancy	6 hour(s) @ hourly rate of pay effective 10/1/2012

Gates grant

1 . Adams, Lori	4.5 hour(s) @ hourly rate of pay effective 10/23/2012
2 . Austin, Lorna	4.5 hour(s) @ hourly rate of pay effective 10/23/2012
3 . Beaubien, Monica	4.5 hour(s) @ hourly rate of pay effective 10/23/2012
4 . Blau, Cynthia	4.5 hour(s) @ hourly rate of pay effective 10/23/2012
5 . Bonham, Kelsey	4.5 hour(s) @ hourly rate of pay effective 10/23/2012
6 . Borton, Sharon	4.5 hour(s) @ hourly rate of pay effective 10/23/2012

7 . Bronson, Angela	4.5 hour(s) @ hourly rate of pay effective 10/23/2012
8 . Brooks, Amanda	4.5 hour(s) @ hourly rate of pay effective 10/23/2012
9 . Brown, Kelly	4.5 hour(s) @ hourly rate of pay effective 10/1/2012
10 . Bunker, Rebecca	4.5 hour(s) @ hourly rate of pay effective 10/23/2012
11 . Carrizosa, Carla	4.5 hour(s) @ hourly rate of pay effective 10/23/2012
12 . Cartwright-Marvik, Lawanda	As needed effective 9/11/2012 Stipend \$150
13 . Covey, Erica	4.5 hour(s) @ hourly rate of pay effective 10/23/2012
14 . Cramer, Joan	4.5 hour(s) @ hourly rate of pay effective 10/23/2012
15 . Crow, Monica	4.5 hour(s) @ hourly rate of pay effective 10/23/2012
16 . Cummings, Andrea	4.5 hour(s) @ hourly rate of pay effective 10/23/2012
17 . Davis, Mary Kathryn	4.5 hour(s) @ hourly rate of pay effective 10/23/2012
18 . DeJong, Catherine	4.5 hour(s) @ hourly rate of pay effective 10/23/2012
19 . Embery, Susan	4.5 hour(s) @ hourly rate of pay effective 10/23/2012
20 . Escalera, Jillyan	4.5 hour(s) @ hourly rate of pay effective 10/23/2012
21 . Garcia, Deaydrdra	4.5 hour(s) @ hourly rate of pay effective 10/23/2012
22 . Garrido, Kathleen	4.5 hour(s) @ hourly rate of pay effective 10/23/2012
23 . Gordon, Sandra	4.5 hour(s) @ hourly rate of pay effective 10/23/2012

24 . Haechier, Molly	4.5 hour(s) @ hourly rate of pay effective 10/23/2012
25 . Heier, Adrienne	4.5 hour(s) @ hourly rate of pay effective 10/23/2012
26 . Herren, Breana	4.5 hour(s) @ hourly rate of pay effective 10/23/2012
27 . Howell, Angelica	4.5 hour(s) @ hourly rate of pay effective 10/23/2012
28 . Johnson, Beth	4.5 hour(s) @ hourly rate of pay effective 10/23/2012
29 . Johnson, Kelli	4.5 hour(s) @ hourly rate of pay effective 10/23/2012
30 . Karow, Sarah	4.5 hour(s) @ hourly rate of pay effective 10/23/2012
31 . Lewis, Jessica	4.5 hour(s) @ hourly rate of pay effective 10/23/2012
32 . Lindberg, Dara	4.5 hour(s) @ hourly rate of pay effective 10/23/2012
33 . Linn, Angela	4.5 hour(s) @ hourly rate of pay effective 10/23/2012
34 . McKenzie, Julie	4.5 hour(s) @ hourly rate of pay effective 10/23/2012
35 . Mischke, Emily	4.5 hour(s) @ hourly rate of pay effective 10/23/2012
36 . Moore, Erika	4.5 hour(s) @ hourly rate of pay effective 10/23/2012
37 . Musial, Diana	4.5 hour(s) @ hourly rate of pay effective 10/23/2012
38 . Nissen-Haney, Jacqueline	4.5 hour(s) @ hourly rate of pay effective 10/23/2012
39 . Parce, Wendy	4.5 hour(s) @ hourly rate of pay effective 10/23/2012
40 . Poppe, Dana	4.5 hour(s) @ hourly rate of pay effective 10/23/2012

41 . Pozzi, Lena	4.5 hour(s) @ hourly rate of pay effective 10/23/2012
42 . Saiki, Donna	4.5 hour(s) @ hourly rate of pay effective 10/23/2012
43 . Scholzen, Julie	4.5 hour(s) @ hourly rate of pay effective 10/23/2012
44 . Schuman, Susan	4.5 hour(s) @ hourly rate of pay effective 10/23/2012
45 . Seeley, Mary Jo	4.5 hour(s) @ hourly rate of pay effective 10/23/2012
46 . Sergis, Melissa	4.5 hour(s) @ hourly rate of pay effective 10/23/2012
47 . Spaid, Marissa	4.5 hour(s) @ hourly rate of pay effective 10/23/2012
48 . Spears, Lindsay	4.5 hour(s) @ hourly rate of pay effective 10/23/2012
49 . Stang, Beverly	4.5 hour(s) @ hourly rate of pay effective 10/23/2012
50 . Surber, Maribeth	4.5 hour(s) @ hourly rate of pay effective 10/23/2012
51 . Swanson, Jennifer	4.5 hour(s) @ hourly rate of pay effective 10/23/2012
52 . Uffalussy, Leslie	4.5 hour(s) @ hourly rate of pay effective 10/23/2012
53 . Wilcox, Cheryl	4.5 hour(s) @ hourly rate of pay effective 10/23/2012
54 . Williams, Christina	4.5 hour(s) @ hourly rate of pay effective 10/23/2012
55 . Wittgow, Erica	19.5 hour(s) @ hourly rate of pay effective 9/19/2012
56 . Wren, Alice	4.5 hour(s) @ hourly rate of pay effective 10/23/2012
57 . Young, Danielle	4.5 hour(s) @ hourly rate of pay effective 10/23/2012

HS standards-based pilot

- | | |
|----------------|--|
| 1 . Neu, Susan | 4 hour(s) @ hourly rate of pay effective
9/5/2012 |
|----------------|--|

IEP meeting

- | | |
|-------------------|--|
| 1 . Johnson, Anna | 1 hour(s) @ hourly rate of pay effective
9/5/2012 |
|-------------------|--|

Interpreting

- | | |
|-----------------------|--|
| 1 . Figueroa, Marcela | 85 hour(s) @ hourly rate of pay effective
10/1/2012 |
|-----------------------|--|

Involuntary room move

- | | |
|--------------------|--|
| 1 . Lamb, Peter | 14 hour(s) @ hourly rate of pay effective
9/25/2012 |
| 2 . Linn, Angela | 14 hour(s) @ hourly rate of pay effective
9/5/2012 |
| 3 . Mischke, Emily | 14 hour(s) @ hourly rate of pay effective
9/11/2012 |

Involuntary transfer

- | | |
|----------------------|---|
| 1 . Bonnell, William | 14 hour(s) @ hourly rate of pay effective
9/1/2012 |
|----------------------|---|

LA curriculum

- | | |
|----------------------|--|
| 1 . Asfour, April | 8.4 hour(s) @ hourly rate of pay effective
9/4/2012 |
| 2 . Astle, Erika | 14 hour(s) @ hourly rate of pay effective
9/5/2012 |
| 3 . Bowler, Donna | 14 hour(s) @ hourly rate of pay effective
9/4/2012 |
| 4 . Callero, Anthony | 14 hour(s) @ hourly rate of pay effective
9/4/2012 |
| 5 . Carstens, Corrie | 14 hour(s) @ hourly rate of pay effective
9/4/2012 |
| 6 . Cleary, James | 14 hour(s) @ hourly rate of pay effective
9/4/2012 |

7 . Connelly, Ericka	14 hour(s) @ hourly rate of pay effective 9/4/2012
8 . Dozier, Alethea	14 hour(s) @ hourly rate of pay effective 10/4/2012
9 . Durham, Ann	8.5 hour(s) @ hourly rate of pay effective 9/4/2012
10 . Hammond, Lindsey	14 hour(s) @ hourly rate of pay effective 9/4/2012
11 . Harmon, Sheryl	8.4 hour(s) @ hourly rate of pay effective 9/4/2012
12 . Hubbell, Carolyn	14 hour(s) @ hourly rate of pay effective 9/4/2012
13 . Karpan, Lori	14 hour(s) @ hourly rate of pay effective 10/4/2012
14 . Koenig, Sally	8.5 hour(s) @ hourly rate of pay effective 9/4/2012
15 . Kovash, Julie	14 hour(s) @ hourly rate of pay effective 10/4/2012
16 . Lantz, Kathy	14 hour(s) @ hourly rate of pay effective 9/4/2012
17 . MacDougall, Joel	14 hour(s) @ hourly rate of pay effective 10/4/2012
18 . O'Connor, Terry	5.6 hour(s) @ hourly rate of pay effective 9/4/2012
19 . Schleicher, Stephanie	8.4 hour(s) @ hourly rate of pay effective 9/4/2012
20 . Sleeth, Amy	14 hour(s) @ hourly rate of pay effective 10/4/2012
21 . Swanson, Penni	5.75 hour(s) @ hourly rate of pay effective 9/4/2012
22 . Walker, Dena	14 hour(s) @ hourly rate of pay effective 9/4/2012
23 . Warring, Peter	8.5 hour(s) @ hourly rate of pay effective 9/4/2012

- | | |
|-------------------------|--|
| 24 . Wasserman, Michael | 14 hour(s) @ hourly rate of pay effective
9/4/2012 |
| 25 . Watkins, Kanika | 14 hour(s) @ hourly rate of pay effective
10/4/2012 |
| 26 . Winter, Susan | 8.5 hour(s) @ hourly rate of pay effective
9/4/2012 |

Music director/concerts

- | | |
|-------------------|--|
| 1 . Henry, Milene | 10 hour(s) @ hourly rate of pay effective
10/8/2012 |
|-------------------|--|

Open house

- | | |
|--------------------|---|
| 1 . Dickson, Glenn | 2 hour(s) @ hourly rate of pay effective
9/19/2012 |
|--------------------|---|

PLC

- | | |
|---------------------------|--|
| 1 . Bloedel, Jeanne | 24 hour(s) @ hourly rate of pay effective
10/1/2012 |
| 2 . Harmon, Sheryl | 24 hour(s) @ hourly rate of pay effective
10/1/2012 |
| 3 . Horlick, Robert | 24 hour(s) @ hourly rate of pay effective
10/1/2012 |
| 4 . McCleery, Kealy | 24 hour(s) @ hourly rate of pay effective
10/1/2012 |
| 5 . O'Connor, Terry | 24 hour(s) @ hourly rate of pay effective
10/1/2012 |
| 6 . Sarr, Diane | 24 hour(s) @ hourly rate of pay effective
10/1/2012 |
| 7 . Schleicher, Stephanie | 24 hour(s) @ hourly rate of pay effective
10/1/2012 |

Prep for inservice

- | | |
|----------------------------|---|
| 1 . Dussault-Walker, Donna | 2 hour(s) @ hourly rate of pay effective
10/1/2012 |
| 2 . Goranson, Delci | 2 hour(s) @ hourly rate of pay effective
10/1/2012 |

3 . Kihara, Alison 1 hour(s) @ hourly rate of pay effective
10/1/2012

4 . Mulick, Patrick 2 hour(s) @ hourly rate of pay effective
10/1/2012

Program support

1 . Aarstad, Jon 15 hour(s) @ hourly rate of pay effective
9/5/2012

2 . Beck, Thelma 15 hour(s) @ hourly rate of pay effective
9/5/2012

3 . Bosch, Michael 15 hour(s) @ hourly rate of pay effective
9/5/2012

4 . Butler, Regina 15 hour(s) @ hourly rate of pay effective
9/5/2012

5 . Carroll, Cynthia 15 hour(s) @ hourly rate of pay effective
9/5/2012

6 . Detwiler, Kimberly 15 hour(s) @ hourly rate of pay effective
9/5/2012

7 . Dragseth, Paula 15 hour(s) @ hourly rate of pay effective
9/5/2012

8 . Ekstrom, Cory 15 hour(s) @ hourly rate of pay effective
9/5/2012

9 . Erickson, Staci 15 hour(s) @ hourly rate of pay effective
9/5/2012

10 . Harlor II, John 15 hour(s) @ hourly rate of pay effective
9/5/2012

11 . Hess, Lyn 15 hour(s) @ hourly rate of pay effective
9/5/2012

12 . Holbrook, Deanna 15 hour(s) @ hourly rate of pay effective
9/5/2012

13 . Horn, Lisa 15 hour(s) @ hourly rate of pay effective
9/5/2012

14 . James, Susan E. 15 hour(s) @ hourly rate of pay effective
9/5/2012

- | | |
|---------------------------|--|
| 15 . Johnson, Lindsey | 15 hour(s) @ hourly rate of pay effective 9/5/2012 |
| 16 . Kessler, Chelsi | 15 hour(s) @ hourly rate of pay effective 9/5/2012 |
| 17 . Kuzaro, Jesslyn | 15 hour(s) @ hourly rate of pay effective 9/5/2012 |
| 18 . Locascio, Anne | 15 hour(s) @ hourly rate of pay effective 9/5/2012 |
| 19 . Millang, Susan | 15 hour(s) @ hourly rate of pay effective 9/5/2012 |
| 20 . O'Brien, Leahmarie | 15 hour(s) @ hourly rate of pay effective 9/5/2012 |
| 21 . Rasmussen, Karine | 15 hour(s) @ hourly rate of pay effective 9/5/2012 |
| 22 . Scott, Erin | 15 hour(s) @ hourly rate of pay effective 9/5/2012 |
| 23 . Stalmaster, Margaret | 15 hour(s) @ hourly rate of pay effective 9/5/2012 |

Reaching out fair

- | | |
|------------------------|--|
| 1 . Cameron, Amy | 3 hour(s) @ hourly rate of pay effective 10/1/2012 |
| 2 . Campbell, Monica | 3 hour(s) @ hourly rate of pay effective 10/1/2012 |
| 3 . Hanson, Carol Lynn | 3 hour(s) @ hourly rate of pay effective 10/1/2012 |
| 4 . Mead, Steven | 3 hour(s) @ hourly rate of pay effective 10/1/2012 |
| 5 . Morrow, Jonathan | 3 hour(s) @ hourly rate of pay effective 10/1/2012 |

Recess duty

- | | |
|----------------------|--|
| 1 . Samuelson, Sarah | 8 hour(s) @ hourly rate of pay effective 10/5/2012 |
|----------------------|--|

Registration days

1 . Sauerbier, Tori 24.5 hour(s) @ hourly rate of pay effective
8/30/2012

Right response training

1 . Foster, Ryan 35 hour(s) @ hourly rate of pay effective
10/1/2012

2 . Jordan, Gary 35 hour(s) @ hourly rate of pay effective
10/1/2012

Schoolwires

1 . Boe, Marci 2 hour(s) @ hourly rate of pay effective
8/14/2012

2 . Carter, Amber 2 hour(s) @ hourly rate of pay effective
8/14/2012

3 . Disbrow, Laurel 2 hour(s) @ hourly rate of pay effective
8/14/2012

4 . Erickson, Staci 2 hour(s) @ hourly rate of pay effective
8/15/2012

5 . Ford, Jennifer 2 hour(s) @ hourly rate of pay effective
8/15/2012

6 . Grab, Arnie 2 hour(s) @ hourly rate of pay effective
8/15/2012

SIP meeting

1 . Robello, Brittany 2 hour(s) @ hourly rate of pay effective
10/2/2012

Special coverage in building

1 . Buchanon, Wendy 7 hour(s) @ hourly rate of pay effective
9/28/2012

Tutoring

1 . Sullivan, Francine 100 hour(s) @ hourly rate of pay effective
10/1/2012

Waiver day Spanish class

1 . Barnett, Carol 3 hour(s) @ hourly rate of pay effective
10/12/2012

2. Swendall-White, Kaisa

3 hour(s) @ hourly rate of pay effective
10/12/2012

Wednesday school supervision

1. Aarstad, Jon

8 hour(s) @ hourly rate of pay effective
9/1/2012

2. Franz, Alyssa

7 hour(s) @ hourly rate of pay effective
9/1/2012

3. James, Susan E.

45 hour(s) @ hourly rate of pay effective
9/1/2012

4. Valentin, Edmund

5 hour(s) @ hourly rate of pay effective
9/1/2012

Leave

Teacher

1. Farris, Kimberly

effective 10/30/2012
Childrearing leave (remainder of 2012-13 school
year)

New Hire

Teacher

1. Keiser, Roseanna Sheri

effective 10/17/2012
C4, S0
Special Education .4 - job share

2. Libadia, Raphael

effective 10/5/2012
C4, S0
Fifth grade

PERSONNEL--CLASSIFIED

Curriculum/Non-Curriculum hours

Assistant coach - Football

- | | |
|-----------------|--|
| 1. Murr, James | 150 hour(s) @ hourly rate of pay effective
10/9/2012
Stipend - \$3,494 |
| 2. Weaver, Rory | 150 hour(s) @ hourly rate of pay effective
9/4/2012
Stipend - \$2,940 |

Bus supervision

- | | |
|---------------------|---|
| 1. McMahon, Heather | 10 hour(s) @ hourly rate of pay effective
9/5/2012 |
|---------------------|---|

Coach - 6th grade boys basketball

- | | |
|------------------|---|
| 1. Hummell, Sean | 40 hour(s) @ hourly rate of pay effective
10/4/2012
Stipend - \$728 |
|------------------|---|

Debate

- | | |
|----------------------------|---|
| 1. Widrig-Hodges, Jennifer | 200 hour(s) @ hourly rate of pay effective
9/4/2012
Stipend - \$3,537 |
|----------------------------|---|

Extra hours - Health room

- | | |
|---------------------|---|
| 1. DeBolt, Charlene | 36 hour(s) @ hourly rate of pay effective
9/4/2012 |
| 2. Segarra, Brianne | 55 hour(s) @ hourly rate of pay effective
9/4/2012 |

Extra hours - MAPS

- | | |
|-------------------------|---|
| 1. Buckingham, Kimberly | 18 hour(s) @ hourly rate of pay effective
9/5/2012 |
|-------------------------|---|

Installation - Hunter Alignment machine

- | | |
|----------------|---|
| 1. Book, Tanya | 7 hour(s) @ hourly rate of pay effective
7/24/2012 |
|----------------|---|

Kitchen set-up 2012-13 school year

- | | |
|------------------|--|
| 1. Ball, Loretta | 8 hour(s) @ hourly rate of pay effective
9/4/2012 |
|------------------|--|

2 . Bayer, Mary Margaret	8 hour(s) @ hourly rate of pay effective 9/4/2012
3 . Bernier, Leona	8 hour(s) @ hourly rate of pay effective 9/4/2012
4 . Brockamp, Denise	4 hour(s) @ hourly rate of pay effective 9/4/2012
5 . Brown, Charlene	4 hour(s) @ hourly rate of pay effective 9/4/2012
6 . Brown, Lisa	4 hour(s) @ hourly rate of pay effective 9/4/2012
7 . Burhenn, Patricia	4 hour(s) @ hourly rate of pay effective 9/4/2012
8 . Burnham, Kim	4 hour(s) @ hourly rate of pay effective 9/4/2012
9 . Burns, Tracy	8 hour(s) @ hourly rate of pay effective 9/4/2012
10 . Chandler, Debbie	8 hour(s) @ hourly rate of pay effective 9/4/2012
11 . Chaowanapibool, Bunruan	4 hour(s) @ hourly rate of pay effective 9/4/2012
12 . Chapman, Ruth	4 hour(s) @ hourly rate of pay effective 9/4/2012
13 . Cookston, Sheryl	4 hour(s) @ hourly rate of pay effective 9/4/2012
14 . Coronado, Azucena	4 hour(s) @ hourly rate of pay effective 9/4/2012
15 . Dehnert, Amber	4 hour(s) @ hourly rate of pay effective 9/4/2012
16 . Diaz, Lourtina	4 hour(s) @ hourly rate of pay effective 9/4/2012
17 . Dube, Debra	8 hour(s) @ hourly rate of pay effective 9/4/2012
18 . Ellis, Andrea	4 hour(s) @ hourly rate of pay effective 9/4/2012

19 . Estrada, Susanne	4 hour(s) @ hourly rate of pay effective 9/4/2012
20 . Floyd, Sharon	4 hour(s) @ hourly rate of pay effective 9/4/2012
21 . Fogarty, Delia	8 hour(s) @ hourly rate of pay effective 9/4/2012
22 . Freeman, Janie	4 hour(s) @ hourly rate of pay effective 9/4/2012
23 . Gieszler, Kathleen	4 hour(s) @ hourly rate of pay effective 9/4/2012
24 . Gilbert, Tammy	4 hour(s) @ hourly rate of pay effective 9/4/2012
25 . Goering, Tamara	4 hour(s) @ hourly rate of pay effective 9/4/2012
26 . Grimm, Pamela	4 hour(s) @ hourly rate of pay effective 9/4/2012
27 . Harris, Dyane	8 hour(s) @ hourly rate of pay effective 9/4/2012
28 . Hatten, Arlene	8 hour(s) @ hourly rate of pay effective 9/4/2012
29 . Hogstrom, Armenda	4 hour(s) @ hourly rate of pay effective 9/4/2012
30 . Hughes, Diane	4 hour(s) @ hourly rate of pay effective 9/4/2012
31 . Jones, Tresa	8 hour(s) @ hourly rate of pay effective 9/4/2012
32 . Kalasountas, Julie	4 hour(s) @ hourly rate of pay effective 9/4/2012
33 . Kearney, Denise	4 hour(s) @ hourly rate of pay effective 9/4/2012
34 . Kelley, Virginia	4 hour(s) @ hourly rate of pay effective 9/4/2012
35 . Kumar, Rajni	4 hour(s) @ hourly rate of pay effective 9/4/2012

36 . Lai, Yuen Chun	4 hour(s) @ hourly rate of pay effective 9/4/2012
37 . Lambert, Heidi	4 hour(s) @ hourly rate of pay effective 9/4/2012
38 . Lawrence, Virginia	8 hour(s) @ hourly rate of pay effective 9/4/2012
39 . Lewis, Tammie	4 hour(s) @ hourly rate of pay effective 9/4/2012
40 . Lichty, Lori	4 hour(s) @ hourly rate of pay effective 9/4/2012
41 . Liedahl, Barbara	4 hour(s) @ hourly rate of pay effective 9/4/2012
42 . Lindsey, Heidi	4 hour(s) @ hourly rate of pay effective 9/4/2012
43 . Lychik, Raisa	8 hour(s) @ hourly rate of pay effective 9/4/2012
44 . Mallete, Travis	4 hour(s) @ hourly rate of pay effective 9/4/2012
45 . Matt, Patti	4 hour(s) @ hourly rate of pay effective 9/4/2012
46 . McCarty, Krystal	4 hour(s) @ hourly rate of pay effective 9/4/2012
47 . McLaughlin, Anne	4 hour(s) @ hourly rate of pay effective 9/4/2012
48 . McMichael, Rebecca	8 hour(s) @ hourly rate of pay effective 9/4/2012
49 . Meneghini, Jody	8 hour(s) @ hourly rate of pay effective 9/4/2012
50 . Merritt, Sunshine	4 hour(s) @ hourly rate of pay effective 9/4/2012
51 . Nesbitt, Debra	8 hour(s) @ hourly rate of pay effective 9/4/2012
52 . Nielsen-Homan, Janet	8 hour(s) @ hourly rate of pay effective 9/4/2012

53 . Oglesby, Cynthia	8 hour(s) @ hourly rate of pay effective 9/4/2012
54 . Olson, Deborah	11 hour(s) @ hourly rate of pay effective 9/4/2012
55 . Parke, Lynn	4 hour(s) @ hourly rate of pay effective 9/4/2012
56 . Quarnstrom, Luz Mary	4 hour(s) @ hourly rate of pay effective 9/4/2012
57 . Reef, Kim	4 hour(s) @ hourly rate of pay effective 9/4/2012
58 . Rockey, Susanna	8 hour(s) @ hourly rate of pay effective 9/4/2012
59 . Rogers, Doreen	4 hour(s) @ hourly rate of pay effective 9/4/2012
60 . Ross, Erin	8 hour(s) @ hourly rate of pay effective 9/4/2012
61 . Rossiytseva, Valentina	8 hour(s) @ hourly rate of pay effective 9/4/2012
62 . Sandstrom, Shannon	4 hour(s) @ hourly rate of pay effective 9/4/2012
63 . Saunders, Luann	4 hour(s) @ hourly rate of pay effective 9/4/2012
64 . Sindhu, Nikhat	4 hour(s) @ hourly rate of pay effective 9/4/2012
65 . Smirnova, Irina	4 hour(s) @ hourly rate of pay effective 9/4/2012
66 . Smith, Melody	4 hour(s) @ hourly rate of pay effective 9/4/2012
67 . Sodenkamp, Christina	8 hour(s) @ hourly rate of pay effective 9/4/2012
68 . Spatarel, Olga	4 hour(s) @ hourly rate of pay effective 9/4/2012
69 . Sudweeks, Jennifer	4 hour(s) @ hourly rate of pay effective 9/4/2012

70 . Syslo, Tonya	4 hour(s) @ hourly rate of pay effective 9/4/2012
71 . Voss, Lyndsey	4 hour(s) @ hourly rate of pay effective 9/4/2012
72 . Wagner, Sheryl	8 hour(s) @ hourly rate of pay effective 9/4/2012
73 . Wallin, Tamara	4 hour(s) @ hourly rate of pay effective 9/4/2012
74 . Warren, Lorie	8 hour(s) @ hourly rate of pay effective 9/4/2012
75 . Washburn, Sheri	4 hour(s) @ hourly rate of pay effective 9/4/2012
76 . White, Evangeline	4 hour(s) @ hourly rate of pay effective 9/4/2012
77 . Wilson, Shellie	11 hour(s) @ hourly rate of pay effective 9/4/2012
78 . Zinsli, Carrie	4 hour(s) @ hourly rate of pay effective 9/4/2012
79 . Zipf Rosa, Jana	4 hour(s) @ hourly rate of pay effective 9/4/2012

Marching band assistant

1 . Paustian, Monica	200 hour(s) @ hourly rate of pay effective 9/1/2012 Stipend - \$5,086
----------------------	---

Meeting - IEP

1 . Lorash, Rebecca	0.5 hour(s) @ hourly rate of pay effective 9/4/2012
---------------------	--

Meeting - Nutritional guidelines

1 . Amburgey, Kenlynn	2 hour(s) @ hourly rate of pay effective 9/4/2012
2 . Dahlstedt, Lisa	2 hour(s) @ hourly rate of pay effective 9/4/2012
3 . Dunham, Denise	2 hour(s) @ hourly rate of pay effective 9/4/2012

- | | |
|----------------------------|--|
| 4 . Flores, Susan | 2 hour(s) @ hourly rate of pay effective
9/4/2012 |
| 5 . Hanson, Necia | 2 hour(s) @ hourly rate of pay effective
9/4/2012 |
| 6 . Holman, Tammy | 2 hour(s) @ hourly rate of pay effective
9/4/2012 |
| 7 . Jackson, Kaye | 2 hour(s) @ hourly rate of pay effective
9/4/2012 |
| 8 . Johnson, Tamara D. | 2 hour(s) @ hourly rate of pay effective
9/4/2012 |
| 9 . Loomis, D. Michele | 2 hour(s) @ hourly rate of pay effective
9/4/2012 |
| 10 . Madoulet, Monica | 2 hour(s) @ hourly rate of pay effective
9/4/2012 |
| 11 . Mathews, Mary | 2 hour(s) @ hourly rate of pay effective
9/4/2012 |
| 12 . McCall, Eveliene | 2 hour(s) @ hourly rate of pay effective
9/4/2012 |
| 13 . McLaughlin, Catherine | 2 hour(s) @ hourly rate of pay effective
9/4/2012 |
| 14 . Murphy, Patrick | 2 hour(s) @ hourly rate of pay effective
9/4/2012 |

Meeting - Student transition

- | | |
|----------------------|---|
| 1 . McMahon, Heather | 3 hour(s) @ hourly rate of pay effective
8/29/2012 |
|----------------------|---|

Meetings - Adaptive behavior

- | | |
|--------------------|---|
| 1 . Bylin, Debra | 5.25 hour(s) @ hourly rate of pay effective
9/5/2012 |
| 2 . Downing, John | 5.5 hour(s) @ hourly rate of pay effective
9/5/2012 |
| 3 . Schaper, Kelly | 4 hour(s) @ hourly rate of pay effective
9/5/2012 |

Preparation - Classified inservice

1 . Grentz, Susan	4 hour(s) @ hourly rate of pay effective 10/1/2012
-------------------	---

Preparation - Open House

1 . Schumaier, Kathleen	3 hour(s) @ hourly rate of pay effective 8/27/2012
-------------------------	---

Professional development meetings

1 . Casanova, Donna	1 hour(s) @ hourly rate of pay effective 9/7/2011
---------------------	--

2 . Hall, Sarah	3 hour(s) @ hourly rate of pay effective 9/7/2011
-----------------	--

3 . Harris, Kellie	3 hour(s) @ hourly rate of pay effective 9/7/2011
--------------------	--

4 . Hoevet, Tracey	4 hour(s) @ hourly rate of pay effective 9/7/2011
--------------------	--

5 . Jensen, Lois	4 hour(s) @ hourly rate of pay effective 9/7/2011
------------------	--

6 . Mendez, Leticia	2 hour(s) @ hourly rate of pay effective 9/7/2011
---------------------	--

7 . Plante, Marie-Lynne	4 hour(s) @ hourly rate of pay effective 9/7/2011
-------------------------	--

8 . Rudolph, Garnet	2 hour(s) @ hourly rate of pay effective 9/7/2011
---------------------	--

Training

1 . Reagan, Jesse	1 hour(s) @ hourly rate of pay effective 9/10/2012
-------------------	---

2 . Stroomer, Claudia	2.75 hour(s) @ hourly rate of pay effective 9/4/2012
-----------------------	---

3 . Whitmore, Erin	1 hour(s) @ hourly rate of pay effective 9/10/2012
--------------------	---

Tutor

1 . Sheehan, Lori	50 hour(s) @ hourly rate of pay effective 10/11/2012
-------------------	---

New Hire

Assistant cook - Floater

1. Merritt, Sunshine
2 hour(s) for 180 day(s) @ hourly rate of pay effective 9/1/2012
Qualified, willing applicant hired through the interview process.
2. Sudweeks, Jennifer
2 hour(s) for 180 day(s) @ hourly rate of pay effective 9/5/2012
Qualified, willing applicant hired through the interview process.

Campus Security

1. Stubblefield, Adrian
2.1 hour(s) for 154 day(s) @ hourly rate of pay effective 10/10/2012
Qualified, willing applicant hired through the interview process

Custodian A - Split shift

1. Garnica, David
8 hour(s) for 239 day(s) @ hourly rate of pay effective 10/3/2012
Qualified, willing applicant hired through the interview process

Para Educator Career Center

1. Anderson, Angela
4 hour(s) for 151 day(s) @ hourly rate of pay effective 10/16/2012
2012-13 School year

Para Educator CISA

1. McCartan, Autumn
3.5 hour(s) for 172 day(s) @ hourly rate of pay effective 9/17/2012
2012-13 School year

Para Educator Marketing

1. Thompson, Lindsey
3 hour(s) for 152 day(s) @ hourly rate of pay effective 10/15/2012
2012-13 School year

Rehire

Assistant cook

1. Matt, Patti
2 hour(s) for 180 day(s) @ hourly rate of pay effective 9/1/2012
2012-13 school year
2. McCarty, Krystal
3 hour(s) for 180 day(s) @ hourly rate of pay effective 9/1/2012
2012-13 school year

- 3 . McLaughlin, Anne
4.5 hour(s) for 180 day(s) @ hourly rate of
pay effective 9/1/2012
2012-13 school year
- 4 . Parke, Lynn
3.5 hour(s) for 180 day(s) @ hourly rate of
pay effective 9/1/2012
2012-13 school year
- 5 . Quarnstrom, Luz Mary
5.5 hour(s) for 180 day(s) @ hourly rate of
pay effective 9/1/2012
2012-13 school year
- 6 . Rockey, Susanna
3 hour(s) for 180 day(s) @ hourly rate of pay
effective 9/1/2012
2012-13 school year
- 7 . Rogers, Doreen
5 hour(s) for 180 day(s) @ hourly rate of pay
effective 9/1/2012
2012-13 school year
- 8 . Ross, Erin
2 hour(s) for 180 day(s) @ hourly rate of pay
effective 9/1/2012
2012-13 school year
- 9 . Rossiyeva, Valentina
2.5 hour(s) for 180 day(s) @ hourly rate of
pay effective 9/1/2012
2012-13 school year
- 10 . Sandstrom, Shannon
4 hour(s) for 180 day(s) @ hourly rate of pay
effective 9/1/2012
2012-13 school year
- 11 . Sindhu, Nikhat
3 hour(s) for 180 day(s) @ hourly rate of pay
effective 9/1/2012
2012-13 school year
- 12 . Smirnova, Irina
3.5 hour(s) for 180 day(s) @ hourly rate of
pay effective 9/1/2012
2012-13 school year
- 13 . Smith, Melody
5 hour(s) for 180 day(s) @ hourly rate of pay
effective 9/1/2012
2012-13 school year
- 14 . Spatarel, Olga
3.5 hour(s) for 180 day(s) @ hourly rate of
pay effective 9/1/2012
2012-13 school year
- 15 . Voss, Lyndsey
3 hour(s) for 180 day(s) @ hourly rate of pay
effective 9/1/2012
2012-13 school year

16. Wallin, Tamara
3.5 hour(s) for 180 day(s) @ hourly rate of
pay effective 9/1/2012
2012-13 school year
17. Washburn, Sheri
4.5 hour(s) for 180 day(s) @ hourly rate of
pay effective 9/1/2012
2012-13 school year
18. White, Evangeline
2.5 hour(s) for 180 day(s) @ hourly rate of
pay effective 9/1/2012
2012-13 school year
19. Zinsli, Carrie
4 hour(s) for 180 day(s) @ hourly rate of pay
effective 9/1/2012
2012-13 school year
20. Zipf Rosa, Jana
2.5 hour(s) for 180 day(s) @ hourly rate of
pay effective 9/1/2012
2012-13 school year; worked in conjunction with
4-part 49762

Assistant cook - Floater

1. Meneghini, Jody
2 hour(s) for 180 day(s) @ hourly rate of pay
effective 9/1/2012
2012-13 school year

Custodian A

1. Mirgorodskiy, Petr
8 hour(s) for 260 day(s) @ hourly rate of pay
effective 9/1/2012
2012-13 school year
2. Nash, Michael
8 hour(s) for 260 day(s) @ hourly rate of pay
effective 9/1/2012
2012-13 school year
3. Palyo, Darleen
8 hour(s) for 260 day(s) @ hourly rate of pay
effective 9/1/2012
2012-13 school year
4. Powell, Robert
8 hour(s) for 260 day(s) @ hourly rate of pay
effective 9/1/2012
2012-13 school year
5. Sears, Bradley
8 hour(s) for 260 day(s) @ hourly rate of pay
effective 9/1/2012
2012-13 school year
6. Silva, Jeannine
8 hour(s) for 260 day(s) @ hourly rate of pay
effective 9/1/2012
2012-13 school year

7. Tobler, Catherine 8 hour(s) for 260 day(s) @ hourly rate of pay
effective 9/1/2012
2012-13 school year

8. Umentum, Judy 8 hour(s) for 260 day(s) @ hourly rate of pay
effective 9/1/2012
2012-13 school year

9. Ward, Kenneth 8 hour(s) for 260 day(s) @ hourly rate of pay
effective 9/1/2012
2012-13 school year

10. Withers, Richard 8 hour(s) for 260 day(s) @ hourly rate of pay
effective 9/1/2012
2012-13 school year

Custodian A - 183

1. Marar, Svetlana 8 hour(s) for 183 day(s) @ hourly rate of pay
effective 9/1/2012
2012-13 school year

Custodian A - 183/Split shift

1. Slaughter, Gary 8 hour(s) for 183 day(s) @ hourly rate of pay
effective 9/1/2012
2012-13 school year

Custodian A - Split shift

1. Witters Jr., Donald 8 hour(s) for 6 day(s) @ hourly rate of pay
effective 9/1/2012
2012-13 school year

Custodian B

1. McMullan, Steven 8 hour(s) for 260 day(s) @ hourly rate of pay
effective 9/1/2012
2012-13 school year

2. Perrin, Mireya 8 hour(s) for 260 day(s) @ hourly rate of pay
effective 9/1/2012
2012-13 school year

3. Ramirez, Lucio 8 hour(s) for 260 day(s) @ hourly rate of pay
effective 9/1/2012
2012-13 school year

4. Whitt, Cindy 8 hour(s) for 260 day(s) @ hourly rate of pay
effective 9/1/2012
2012-13 school year

5. Willert, Stephen 8 hour(s) for 260 day(s) @ hourly rate of pay
effective 9/1/2012
2012-13 school year

Custodian B - 183

1. Marchuk, Aleksandr 4 hour(s) for 183 day(s) @ hourly rate of pay
effective 9/1/2012
2012-13 school year

2. Marchuk, Nadezhda 4 hour(s) for 183 day(s) @ hourly rate of pay
effective 9/1/2012
2012-13 school year

3. Mirgorodskaya, Valentina 8 hour(s) for 183 day(s) @ hourly rate of pay
effective 9/1/2012
2012-13 school year

4. Pearson, Cheryl 8 hour(s) for 183 day(s) @ hourly rate of pay
effective 9/1/2012
2012-13 school year

5. Piper, Mark 8 hour(s) for 183 day(s) @ hourly rate of pay
effective 9/1/2012
2012-13 school year

6. Ranger, Paul 8 hour(s) for 183 day(s) @ hourly rate of pay
effective 9/1/2012
2012-13 school year

Head Custodian - Elementary

1. Nash, Camber 8 hour(s) for 260 day(s) @ hourly rate of pay
effective 9/1/2012
2012-13 school year

2. Price, William 8 hour(s) for 260 day(s) @ hourly rate of pay
effective 9/1/2012
2012-13 school year

3. Seltun, Leticia 8 hour(s) for 260 day(s) @ hourly rate of pay
effective 9/1/2012
2012-13 school year

4. Stonack, Phillip 8 hour(s) for 260 day(s) @ hourly rate of pay
effective 9/1/2012
2012-13 school year

5. Swift, Jani 8 hour(s) for 260 day(s) @ hourly rate of pay
effective 9/1/2012
2012-13 school year

6. Thompson, Brian 8 hour(s) for 260 day(s) @ hourly rate of pay
effective 9/1/2012
2012-13 school year

7. Williamson, Robert 8 hour(s) for 260 day(s) @ hourly rate of pay
effective 9/1/2012
2012-13 school year

Head Custodian - High School

1. Tobler, Gregory 8 hour(s) for 260 day(s) @ hourly rate of pay
effective 9/1/2012
2012-13 school year

2. Walker, Charles 8 hour(s) for 260 day(s) @ hourly rate of pay
effective 9/1/2012
2012-13 school year

Head Custodian - Middle School

1. Turner, Dennis 8 hour(s) for 260 day(s) @ hourly rate of pay
effective 9/1/2012
2012-13 school year

Kitchen Manager - Elementary

1. McMichael, Rebecca 7 hour(s) for 180 day(s) @ hourly rate of pay
effective 9/1/2012
2012-13 school year

2. Oglesby, Cynthia 7 hour(s) for 180 day(s) @ hourly rate of pay
effective 9/1/2012
2012-13 school year

3. Olson, Deborah 8 hour(s) for 180 day(s) @ hourly rate of pay
effective 9/1/2012
2012-13 school year

4. Sodenkamp, Christina 7 hour(s) for 180 day(s) @ hourly rate of pay
effective 9/1/2012
2012-13 school year

5. Warren, Lorie 7 hour(s) for 180 day(s) @ hourly rate of pay
effective 9/1/2012
2012-13 school year

6. Wilson, Shellie 7 hour(s) for 180 day(s) @ hourly rate of pay
effective 9/1/2012
2012-13 school year

Kitchen Manager - Middle School

1. Nesbitt, Debra 7 hour(s) for 180 day(s) @ hourly rate of pay
effective 9/1/2012
2012-13 school year
2. Nielsen-Homan, Janet 7 hour(s) for 180 day(s) @ hourly rate of pay
effective 9/1/2012
2012-13 school year
3. Wagner, Sheryl 7 hour(s) for 180 day(s) @ hourly rate of pay
effective 9/1/2012
2012-13 school year

Landscape Technician

1. Mannas, Joseph 8 hour(s) for 260 day(s) @ hourly rate of pay
effective 9/1/2012
2012-13 school year
2. Shook, Derrick 8 hour(s) for 260 day(s) @ hourly rate of pay
effective 9/1/2012
2012-13 school year
3. Strand, Craig 8 hour(s) for 260 day(s) @ hourly rate of pay
effective 9/1/2012
2012-13 school year

Laundry

1. Zipf Rosa, Jana 4 hour(s) for 183 day(s) @ hourly rate of pay
effective 9/1/2012
2012-13 school year; worked in conjunction with
4-part 49761

Lead - Landscape Technician

1. Witters, Donald 8 hour(s) for 260 day(s) @ hourly rate of pay
effective 9/1/2012
2012-13 school year

Lead - Mechanical Systems Technician

1. Morrow, Richard 8 hour(s) for 260 day(s) @ hourly rate of pay
effective 9/1/2012
2012-13 school year

Mechanical Systems Technician

1. Tramm Jr., Michael 8 hour(s) for 260 day(s) @ hourly rate of pay
effective 9/1/2012
2012-13 school year

Para Educator Special Education SLC

1. Kansanback, Deborah 6.5 hour(s) for 150 day(s) @ hourly rate of
pay effective 10/17/2012
2012-13 School year

Para Educator Special Education Special Kids

1. Whitmore, Erin 6.5 hour(s) for 152 day(s) @ hourly rate of
pay effective 10/15/2012
2012-13 School year

Trades Technician

1. Schadel, Dane 8 hour(s) for 260 day(s) @ hourly rate of pay
effective 9/1/2012
2012-13 school year

2. Scott, Douglas 8 hour(s) for 260 day(s) @ hourly rate of pay
effective 9/1/2012
2012-13 school year

Warehouse Technician

1. Rosa, James 8 hour(s) for 260 day(s) @ hourly rate of pay
effective 9/1/2012
2012-13 school year

Resignation/Retire

No longer available

1. Bekkedahl, Brooke effective 6/22/2012

2. Botz, Kaela effective 6/22/2012

3. Clark, Ashley effective 6/22/2012

Personal

1. Ellis, Andrea effective 10/10/2012

Supervisory Duties

Tuesday/Thursday night program

1. Carrier, Kyle 25 hour(s) @ hourly rate of pay effective
10/4/2012

Wednesday night program

1. Hummell, Sean 12 hour(s) @ hourly rate of pay effective
10/4/2012

Wednesday school

1. Hipol, Connie 70 hour(s) @ hourly rate of pay effective
9/1/2012
2. Jenkins, Marilyn 10 hour(s) @ hourly rate of pay effective
9/1/2012

AUBURN SCHOOL DISTRICT NO. 408

PROCLAMATION

Whereas, American public education serves as the foundation for a democratic society; and,

Whereas, public education has been recognized as a fundamental public good for well over a century; and,

Whereas, the public schools collectively remain one of our most vital institutions; and,

Whereas, our schools continue to provide America with productive citizens; and,

Whereas, the public schools have enabled our diverse population to work and live together in a free society; and,

Whereas, schools play a vital role in building the future—one student at a time,

NOW, therefore, we, serving as the Auburn School Board, do hereby recognize the designation of November 12-16, 2012, as American Education Week.

Signed this 22nd day of October, 2012

*President
Auburn School Board of Directors*

CERTIFICATED RESUMES

- a. Roseanna 'Sheri' Keiser--special education (.4)--Arthur Jacobson Elementary

Ms. Keiser earned her bachelor degree at Western Washington University.

'Sheri' completed her student teaching experience at Gildo Rey Elementary in June, 2012.

- b. Raphael Libadia--fifth grade--Lakeland Hills Elementary

Mr. Libadia earned his bachelor degree at Western Washington University.

Raphael is a graduate of Auburn High School and he completed his student teaching experience in the Puyallup School District in June, 2012.

BUILDING PROGRAM

1. Alpac Elementary School Improvements Project

Attached is a copy of Change Order No. 8 for the Alpac Elementary School Improvements project which should be considered to permit a change in the construction contract amount and an increase in the contract time.

Original Contract	\$949,200.00
Previously Approved	109,660.00
Change Order No. 8	+\$ 40,672.00
New Contract Amount	<u>\$1,099,532.00</u>

The contract time shall be increased by six calendar days.

Jeffrey Grose, executive director of capital projects, will be present to recommend acceptance of this change order.

Recommendation: That Change Order No. 8 be accepted for the Alpac Elementary School Improvements project and the contract amount be increased by \$40,672.00 for a new contract amount of \$1,099,532.00 and the contract time be increased by six days for a new substantial completion date of August 31, 2012.

2. Gildo Rey Elementary School Improvements Project

Attached is a copy of Change Order No. 9 for the Gildo Rey Elementary School Improvements project which should be considered to permit a change in the construction contract amount.

Original Contract	\$1,777,500.00
Previously Approved	79,030.00
Change Order No. 9	+\$ 10,461.00
New Contract Amount	<u>\$1,866,991.00</u>

Jeffrey Grose will be present to recommend acceptance of this change order.

Recommendation: That Change Order No. 9 be accepted for the Gildo Rey Elementary School Improvements project and the contract amount be increased by \$10,461.00 for a new contract amount of \$1,866,991.00.

3. Work in Progress Report

The Capital Projects Department continues to plan and execute projects funded by the Capital Improvements Levy and Capital Projects Fund. Jeffrey Grose will be present to report on the progress of these projects.

Change Order

PROJECT: Alpac Elementary School Improvements
310 Milwaukee Blvd N.
Pacific, WA 98047

CHANGE ORDER NO.: 08

DATE: October 16, 2012

TO CONTRACTOR: Lincoln Construction, Inc.
PO Box 730
Spanaway, WA 98387

CONTRACT DATED: May 9, 2012

ARCHITECT'S PROJECT NO.: 12111015

The Contract is changed as follows:

- | | | | |
|----|--|-----|-------------|
| 1. | CCA #3 – Provide additional plumbing work, slab demolition, excavation, contaminated soil disposal, and slab replacement, and provide 6 calendars days time extension. | Add | \$40,672.00 |
|----|--|-----|-------------|

The original Contract Sum was	\$	949,200.00
Net change by previously authorized Change Orders	\$	109,660.00
The Contract Sum prior to this Change Order was	\$	1,058,860.00
The Contract Sum will be increased by this change order	\$	40,672.00
The new Contract Sum including this Change Order will be	\$	1,099,532.00

The Contract Time will be extended by 6 calendar days.

The date of Substantial Completion as of the date of this Change Order therefore is August 31, 2012.

NAC Architecture
2025 First Avenue, Suite 300
Seattle, WA 98121-3131

Auburn School District #408
915 Fourth Street N.E.
Auburn, WA 98002

Lincoln Construction, Inc.
P.O. Box 730
Spanaway, WA 98387

By: 

By: _____

By: 

Date: 10/16/12

Date: _____

Date: _____

Change Order

PROJECT: Gildo Rey Elementary School Improvements
1005 - 37th Street S.W.
Auburn, WA 98002

CHANGE ORDER NO.: 9

DATE: October 16, 2012

TO CONTRACTOR: Western Ventures Construction, Inc.
P.O. Box 298
Mountlake Terrace, WA 98043

CONTRACT DATED: May 9, 2012

ARCHITECT'S PROJECT NO.: 121-11014

The Contract is changed as follows:

1.	CCA-008 - Replace Deteriorated Asphalt with New Concrete Walkway	Add	\$ 5,654.00
2.	CCA-009 - Replace Existing Area Drain and Deteriorated Drain Piping	Add	\$ 3,946.00
3.	CCA-022 - Add Removable Tray Slides at Pot and Pan Sink In Kitchen	Add	\$ 861.00

The original Contract Sum was	\$ 1,777,500.00
Net change by previously authorized Change Orders	\$ 79,030.00
The Contract Sum prior to this Change Order was	\$ 1,856,530.00
The Contract Sum will be increased by this change order	\$ 10,461.00
The new Contract Sum including this Change Order will be	\$ 1,866,991.00

The Contract Time for the Work will be remain unchanged by 0 days
The date of Substantial Completion as of the date of this Change Order therefore is August 31, 2012.

NAC Architecture
2025 First Avenue, Suite 300
Seattle, WA 98121

Auburn School District #408
915 Fourth Street N.E.
Auburn, WA 98002

Western Ventures Construction, Inc.
P.O. Box 298
Mountlake Terrace, WA 98043

By: 

By: _____

By: 

Date: 10/17/12

Date: _____

Date: 10/17/12

1. Vouchers

Recommendation: That these vouchers be signed.

Financial statements for the months of August and September, 2012, are presented to the board for their information.

Authorization is requested to surplus and sell, at a public sale, the attached itemized list of obsolete and unusable equipment, furniture and vehicles. These items will be sold in accordance with existing board policy and statutes.

Recommendation: That the board authorize the surplus and sale of the listed items.

The following vouchers, as audited and certified by the Auditing Officer as required by RCW 42.24.080, and those expense reimbursement claims certified as required by RCW 42.24.090, are approved for payment. Those payments have been recorded on this listing which has been made available to the board.

As of October 22, 2012, the board, by a _____ vote, approves payments, totaling \$911,184.86. The payments are further identified in this document.

Total by Payment Type for Cash Account, US Bank of Washington:
Warrant Numbers 409047 through 409246, totaling \$911,184.86

Secretary _____	Board Member _____
Board Member _____	Board Member _____
Board Member _____	Board Member _____

Check Nbr	Vendor Name	Check Date	Check Amount
409047	3 WIRE GROUP INC	10/22/2012	460.72
409048	ADVANCE EDUCATION INC	10/22/2012	2,648.64
409049	AGRISHOP INC	10/22/2012	4.92
409050	ALPINE PRODUCTS INC	10/22/2012	43.25
409051	AMERICAN LIGHTING INC	10/22/2012	41.60
409052	ATAFUA, JEAN	10/22/2012	80.59
409053	AUBURN YOUTH RESOURCES INC	10/22/2012	6,160.00
409054	BARNES & NOBLE INC 5903315	10/22/2012	509.78
409055	BINDER PRODUCTS INC	10/22/2012	109.50
409056	BLICK ART MATERIALS	10/22/2012	45.84
409057	BROOKES PUBLISHING CO	10/22/2012	98.87
409058	CAREERSTAFF UNLIMITED INC	10/22/2012	8,172.00
409059	CARPINITO BROTHERS INC	10/22/2012	802.91
409060	CASCADE BEAUTY COLLEGE	10/22/2012	2,100.00
409061	CASE PARTS COMPANY	10/22/2012	74.65
409062	CHILDRENS INSTITUTE FOR LEARNI	10/22/2012	7,600.00
409063	CLARK SECURITY PRODUCTS INC	10/22/2012	761.55

Check Nbr	Vendor Name	Check Date	Check Amount
409064	COLLEGE BOARD	10/22/2012	125.25
409065	CONSOLIDATED PRESS PRINTING CO	10/22/2012	2,947.43
409066	CREATIVE MATHEMATICS	10/22/2012	58.00
409067	CUBILLOS, GABRIELA	10/22/2012	73.03
409068	CUMMINS NW LLC	10/22/2012	1,016.92
409069	CUSTODIO, JEFFREY	10/22/2012	33.75
409070	DAIRY FRESH FARMS INC	10/22/2012	30,374.68
409071	DB SECURE SHRED	10/22/2012	335.85
409072	DEPT OF ENTERPRISE SERVICES	10/22/2012	1,000.00
409073	DRUG FREE BUSINESS	10/22/2012	937.30
409074	DUGANS INCORPORATED	10/22/2012	141.26
409075	ECOLAB FOOD SAFETY SPECIALTIES	10/22/2012	121.23
409076	ECOLAB INC	10/22/2012	61.67
409077	EDUCATIONAL INNOVATIONS INC	10/22/2012	67.75
409078	EMERGENCY MEDICAL TRAINING ASS	10/22/2012	287.71
409079	EVELYN N PROBERT LITERACY CONS	10/22/2012	1,500.00
409080	FIGUEROA, JEANNIE	10/22/2012	9.00
409081	FOOD SERVICES OF AMERICA	10/22/2012	12,984.24
409082	FULL COMPASS SYSTEMS LTD	10/22/2012	476.90
409083	GOODHEART WILCOX PUBLISHER	10/22/2012	2,071.81
409084	GOSNEY MOTOR PARTS INC	10/22/2012	1,311.99
409085	GRAINGER DEPT 810392688	10/22/2012	314.43
409086	GREEN, JORDAN H	10/22/2012	137.50
409087	GT ENGINEERING	10/22/2012	250.00
409088	HAGGEN INC	10/22/2012	115.43

Check Nbr	Vendor Name	Check Date	Check Amount
409089	HEWITT, CINDY LEE	10/22/2012	48.00
409090	HUGHES, JONATHAN CARL	10/22/2012	48.00
409091	IDEAWORKS NW	10/22/2012	1,231.05
409092	IMAGE MASTERS INC	10/22/2012	266.10
409093	JAHN, CARRISA	10/22/2012	18.27
409094	JOHNSTONE SUPPLY	10/22/2012	426.05
409095	JOSTENS	10/22/2012	739.13
409096	JW PEPPER & SON INC	10/22/2012	272.11
409097	KDL HARDWARE SUPPLY INC	10/22/2012	159.50
409098	KELLEY IMAGING SYSTEMS	10/22/2012	402.08
409099	KING COUNTY DIRECTORS ASSN	10/22/2012	718.04
409100	KONICA MINOLTA BUSINESS SOLUTI	10/22/2012	7,056.90
409101	KUKAY, KIMBERLY	10/22/2012	80.00
409102	LANGUAGE CONNECTION LLC	10/22/2012	47.00
409103	LEADER SERVICES INC	10/22/2012	8.40
409104	LEADERSHIP & LEARNING CENTER	10/22/2012	407.86
409105	LIBRARY VIDEO CO	10/22/2012	84.15
409106	LINGUISYSTEMS INC	10/22/2012	645.70
409107	MCKENNA, ELYSE	10/22/2012	5.00
409108	MEAD, KYLEE MONIQUE	10/22/2012	16.00
409109	MECHANICAL SALES INC	10/22/2012	2,421.18
409110	MINUTEMAN PRESS OF AUBURN	10/22/2012	838.50
409111	MOSIYCHUK, PETR	10/22/2012	25.00
409112	MUSIC CENTERS INC	10/22/2012	836.49
409113	NCS PEARSON INC	10/22/2012	460.17

Check Nbr	Vendor Name	Check Date	Check Amount
409114	NETWORK COMPUTING ARCHITECTS I	10/22/2012	11,169.00
409115	NEWS TRIBUNE ADVERTISING	10/22/2012	389.00
409116	NORLIN CONSULTING	10/22/2012	400.00
409117	NW BATTERIES	10/22/2012	369.23
409118	NW SCHOOL HEARING IMPAIRED CHI	10/22/2012	3,000.00
409119	NW TEXTBOOK DEPOSITORY	10/22/2012	39,823.51
409120	OCCUPATIONAL HEALTH SERVICES	10/22/2012	125.00
409121	ORCA PACIFIC INC	10/22/2012	552.44
409122	OSPI CHILD NUTRITION SERV	10/22/2012	16,129.46
409123	PACIFIC OFFICE AUTOMATION	10/22/2012	116.31
409124	PACIFIC POWER PRODUCTS	10/22/2012	262.80
409125	PACIFIC WELDING SUPPLIES	10/22/2012	82.07
409126	PEARSON EDUCATION INC	10/22/2012	4,455.76
409127	PETRO CARD	10/22/2012	35,071.16
409128	PITNEY BOWES POSTAGE BY PHONE	10/22/2012	6,000.00
409129	PITNEY BOWES PRESORT SERVICES	10/22/2012	1,591.94
409130	PLANK ROAD PUBLISHING INC	10/22/2012	152.20
409131	PREG O'DONNELL & GILLETT PLLC	10/22/2012	6,000.00
409132	PUGET SOUND ENERGY ELECTRIC	10/22/2012	90,704.15
409133	PUGET SOUND ENERGY NAT GAS	10/22/2012	15,066.99
409134	REALLY GREAT READING COMPANY L	10/22/2012	340.00
409135	RL ENTERPRISES	10/22/2012	75.00
409136	ROBOMATTER INC	10/22/2012	1,084.90
409137	ROMAINE ELECTRIC CORPORATION	10/22/2012	223.97
409138	SAFARI MONTAGE	10/22/2012	1,095.00

Check Nbr	Vendor Name	Check Date	Check Amount
409139	SAFEWAY INC	10/22/2012	858.36
409140	SCARFF FORD	10/22/2012	96.68
409141	SCHETKY NW SALES INC	10/22/2012	1,624.82
409142	SCHOOL SPECIALTY	10/22/2012	64.18
409143	SEATTLE CENTRAL COMMUNITY COLL	10/22/2012	500.00
409144	SHARP ELECTRONICS INC	10/22/2012	24.99
409145	SOUND ENERGY SYSTEMS	10/22/2012	684.38
409146	SOUTH KING EARLY INTERVENTION	10/22/2012	5,536.00
409147	SOUTHPAW ENTERPRISES INC	10/22/2012	202.92
409148	SPECIALTY FOREST PRODUCTS INC	10/22/2012	537.12
409149	STAPLES ADVANTAGE	10/22/2012	518.74
409150	SUNBELT STAFFING LLC	10/22/2012	8,587.50
409151	SUPERIOR PLUS CONSTRUCTION PRO	10/22/2012	245.88
409152	TED BROWN MUSIC COMPANY	10/22/2012	23.48
409153	TIFFIN MATS INC	10/22/2012	7,175.00
409154	UNIFIRST CORPORATION	10/22/2012	279.10
409155	UNITED PARCEL SERVICE	10/22/2012	103.94
409156	UPSTART	10/22/2012	136.08
409157	US HEALTHWORKS MEDICAL GROUP W	10/22/2012	64.00
409158	USA MOBILITY WIRELESS INC	10/22/2012	545.31
409159	VANG, JOUA	10/22/2012	20.75
409160	WALTER E NELSON COMPANY	10/22/2012	1,554.72
409161	WASH ASSN OF EDUC OFFICE PROFE	10/22/2012	35.00
409162	WASH ASSN FOR MAINTENANCE OPER	10/22/2012	580.00
409163	WASH ASSN OF SCHOOL BUSINESS O	10/22/2012	350.00

Check Nbr	Vendor Name	Check Date	Check Amount
409164	WASH ASSN OF MARKETING EDUCATO	10/22/2012	200.00
409165	WASH CEDAR & SUPPLY CO	10/22/2012	20.54
409166	WASH DECA INC	10/22/2012	150.00
409167	WASH SCHOOLS RISK MGMT POOL MS	10/22/2012	417,306.50
409168	WASH STATE ACADEMY OF NUTRITIO	10/22/2012	75.00
409169	WASH TRACTOR INC	10/22/2012	385.04
409170	WEA/APA FUND - COBRA	10/22/2012	9,907.40
409171	WEAVING WORKS INC	10/22/2012	397.35
409172	WESTERN BUS SALES	10/22/2012	551.80
409173	WEST COAST PLATEN COMPANY	10/22/2012	136.00
409174	WILLAMETTE DENTAL	10/22/2012	239.85
409175	WORLD LANGUAGE SERVICES LLC	10/22/2012	591.45
409176	WSIPC NW ESD FISCAL AGENT	10/22/2012	20,850.68
409177	DENALI ADVANCED INTEGRATION	10/22/2012	1,027.17
409178	DEPT OF REVENUE LEASEHOLD TAX	10/22/2012	4,285.21
409179	GOVCONNECTION INC	10/22/2012	72.38
409180	MCGRANAHAN ARCHITECTS	10/22/2012	1,048.00
409181	MICRO COMPUTER SYSTEMS INC	10/22/2012	1,688.39
409182	NAC ARCHITECTURE INC	10/22/2012	4,880.10
409183	OAC SERVICES INC	10/22/2012	930.00
409184	SHOCKEY PLANNING GROUP INC	10/22/2012	1,915.40
409185	WELSH COMMISSIONING GROUPS INC	10/22/2012	792.00
409186	APPERSON	10/22/2012	356.73
409187	ARYZTA LLC	10/22/2012	1,189.34
409188	AUBURN SCHOOL DIST 408 **	10/22/2012	120.05

Check Nbr	Vendor Name	Check Date	Check Amount
409189	AUBURN SCHOOL DIST 408 **	10/22/2012	280.09
409190	BEAR METAL BOOSTER CLUB	10/22/2012	200.00
409191	BUDS & BLOOM & SONS INC	10/22/2012	91.85
409192	CLOUD 9 SPORTS/BADEN SPORTS	10/22/2012	4,617.58
409193	CLOWNS UNLIMITED	10/22/2012	147.83
409194	COSTCO	10/22/2012	2,020.26
409195	COSTCO	10/22/2012	110.00
409196	DECARTERET DESIGNS LLC	10/22/2012	688.00
409197	EK BEVERAGE COMPANY	10/22/2012	892.25
409198	ELLIOTT, THERESA	10/22/2012	108.70
409199	ENTERTAINMENT PUBLICATIONS LLC	10/22/2012	885.00
409200	FARMER BROTHERS CO	10/22/2012	295.20
409201	FOOD SERVICES OF AMERICA	10/22/2012	475.09
409202	GOS PRINTING CORP	10/22/2012	327.84
409203	GOSNEY MOTOR PARTS INC	10/22/2012	268.40
409204	HABITAT FOR HUMANITY INTERNATI	10/22/2012	2,242.98
409205	HANCE, RACHEL	10/22/2012	25.00
409206	HARLAN FAIRBANKS	10/22/2012	256.00
409207	INTEGRITY PRINT RESOURCE INC	10/22/2012	355.88
409208	KIMMEL ATHLETIC SUPPLY	10/22/2012	279.23
409209	KUNG KAGAM, YVETTE	10/22/2012	10.00
409210	MAKE A WISH FOUNDATION OF ALAS	10/22/2012	824.23
409211	MCMORNJ, RIBKAH	10/22/2012	15.00
409212	MEDCO SUPPLY CO INC	10/22/2012	177.83
409213	MENSTER, HEATHER	10/22/2012	23.00

Check Nbr	Vendor Name	Check Date	Check Amount
409214	MERRIMAN, MICHELLE	10/22/2012	45.00
409215	MUSIC THEATRE INTERNATIONAL	10/22/2012	5,197.00
409216	NEEDLEWORKS INC	10/22/2012	875.18
409217	NORTH MASON SCHOOL DISTRICT #4	10/22/2012	255.00
409218	PACIFIC NW THEATRE ASSN INC	10/22/2012	707.91
409219	PACIFIC SCIENCE CENTER	10/22/2012	600.00
409220	PRAXAIR DISTRIBUTION INC	10/22/2012	44.35
409221	PUGET SOUND COACH LINES	10/22/2012	3,700.00
409222	SAFARI MONTAGE	10/22/2012	1,095.00
409223	SANDLAND PROMOTIONS	10/22/2012	600.06
409224	SHIRLEY, TAYLOR ANNE	10/22/2012	29.14
409225	SOUTH PUGET SOUND LEAGUE TOURN	10/22/2012	40.00
409226	SPOKANE SCHOOL DISTRICT #81	10/22/2012	300.00
409227	STAGECRAFT INDUSTRIES INC	10/22/2012	145.58
409228	STAPLES ADVANTAGE	10/22/2012	2,930.25
409229	STEPHEN, DEREK IKAICA	10/22/2012	110.00
409230	STERLING ATHLETICS	10/22/2012	1,042.99
409231	STUDENT SUPPLY COMPANY	10/22/2012	215.08
409232	TACOMA YOUTH SYMPHONY ASSN	10/22/2012	185.00
409233	TIFFIN MATS INC	10/22/2012	6,935.00
409234	TRU WEST INCORPORATED	10/22/2012	191.01
409235	VARSITY	10/22/2012	16,526.32
409236	WALMART SAMS CLUB	10/22/2012	1,716.64
409237	WASH DECA INC	10/22/2012	7,262.32
409238	WASH STUDENT LEADERSHIP	10/22/2012	1,445.00

Check Nbr	Vendor Name	Check Date	Check Amount
409239	WESTERN WASH FOOTBALL OFFICIAL	10/22/2012	1,120.38
409240	AUBURN MOUNTAINVIEW H S	10/22/2012	187.50
409241	AUBURN RIVERSIDE H S	10/22/2012	184.00
409242	AUBURN SCHOOL DIST CHILD NUTR*	10/22/2012	378.06
409243	AUBURN SENIOR H S	10/22/2012	1,680.25
409244	MT BAKER M S	10/22/2012	37.00
409245	OLYMPIC M S	10/22/2012	2,290.00
409246	RAINIER M S	10/22/2012	22.75
200	Computer	Check(s) For a Total of	911,184.86

0	Manual	Checks For a Total of	0.00
0	Wire Transfer	Checks For a Total of	0.00
0	ACH	Checks For a Total of	0.00
200	Computer	Checks For a Total of	911,184.86
Total For 200 Manual, Wire Tran, ACH & Computer Checks			911,184.86
Less 0	Voided	Checks For a Total of	0.00
Net Amount			911,184.86

F U N D S U M M A R Y

Fund	Description	Balance Sheet	Revenue	Expense	Total
10	General Fund	10,764.94	423.00	807,981.14	819,169.08
20	Capital Projects	3,588.53	0.00	13,050.12	16,638.65
40	ASB Fund	-176.70	0.00	70,774.27	70,597.57
70	Private Purpose	0.00	0.00	4,779.56	4,779.56

The following vouchers, as audited and certified by the Auditing Officer as required by RCW 42.24.080, and those expense reimbursement claims certified as required by RCW 42.24.090, are approved for payment. Those payments have been recorded on this listing which has been made available to the board.

As of October 22, 2012, the board, by a _____ vote, approves payments, totaling \$93,037.07. The payments are further identified in this document.

Total by Payment Type for Cash Account, US Bank Wire Transfers:
Wire Transfer Payments 201200118 through 201200168, totaling \$93,037.07

Secretary _____	Board Member _____
Board Member _____	Board Member _____
Board Member _____	Board Member _____

Check Nbr	Vendor Name	Check Date	Check Amount
201200118	COSTCO	10/22/2012	2,574.70
201200119	DANCE COLLECTION	10/22/2012	1,133.54
201200120	ARYZTA LLC	10/22/2012	255.73
201200121	NEEDLEWORKS INC	10/22/2012	235.43
201200122	ROGERS ATHLETIC	10/22/2012	607.73
201200123	STERLING ATHLETICS	10/22/2012	378.52
201200148	ALLIED WASTE SERVICES	10/22/2012	2,779.13
201200149	AT & T	10/22/2012	32.11
201200150	CENTURY LINK	10/22/2012	40,169.47
201200150	CENTURY LINK	10/22/2012	4,245.78
201200151	AMERICAN LEAK DETECTION	10/22/2012	750.00
201200152	COASTWIDE LABORATORIES	10/22/2012	4,894.56
201200153	CONSOLIDATED ELECTRICAL DIST I	10/22/2012	544.65
201200154	DEMCO INC	10/22/2012	201.79
201200155	CITY OF AUBURN UTILITIES	10/22/2012	13,031.47
201200156	WASTE MANAGEMENT RECYCLE COMPA	10/22/2012	1,487.25
201200157	DYNAMIC LANGUAGE CENTER INC	10/22/2012	124.28

Check Nbr	Vendor Name	Check Date	Check Amount
201200158	GOPHER SPORT	10/22/2012	448.81
201200159	GOS PRINTING CORP	10/22/2012	311.70
201200160	IMAGE ONE CORPORATION	10/22/2012	1,973.00
201200161	JOHNSTONE SUPPLY	10/22/2012	1,411.75
201200162	BROADWAY AT THE PARAMOUNT	10/22/2012	1,495.00
201200163	KING COUNTY DIRECTORS ASSN	10/22/2012	8,270.86
201200164	MICONTROLS INC	10/22/2012	1,166.36
201200165	OFFICE DEPOT INC	10/22/2012	533.13
201200166	PLATT ELECTRIC	10/22/2012	518.64
201200167	SPECIALTY FOREST PRODUCTS INC	10/22/2012	1,401.98
201200168	DEAN EVANS AND ASSOCIATES INC	10/22/2012	2,059.70
28	Wire Transfer Check(s) For a Total of		93,037.07

	0	Manual	Checks For a Total of	0.00
	28	Wire Transfer	Checks For a Total of	93,037.07
	0	ACH	Checks For a Total of	0.00
	0	Computer	Checks For a Total of	0.00
Total For	28	Manual, Wire Tran, ACH & Computer Checks		93,037.07
Less	0	Voided	Checks For a Total of	0.00
		Net Amount		93,037.07

F U N D S U M M A R Y

Fund	Description	Balance Sheet	Revenue	Expense	Total
10	General Fund	6,280.49	0.00	80,075.93	86,356.42
40	ASB Fund	0.00	0.00	6,680.65	6,680.65

The following vouchers, as audited and certified by the Auditing Officer as required by RCW 42.24.080, and those expense reimbursement claims certified as required by RCW 42.24.090, are approved for payment. Those payments have been recorded on this listing which has been made available to the board.

As of October 22, 2012, the board, by a _____ vote, approves payments, totaling \$76,271.31. The payments are further identified in this document.

Total by Payment Type for Cash Account, AP Direct Dep Settlement Accou:
ACH Numbers 121300256 through 121300346, totaling \$76,271.31

Secretary _____	Board Member _____
Board Member _____	Board Member _____
Board Member _____	Board Member _____

Check Nbr	Vendor Name	Check Date	Check Amount
121300256	AIKEN, JOHN JOSEPH	10/22/2012	68.55
121300257	AUBURN SCHOOL DIST REVOLVING F	10/22/2012	3,190.05
121300258	BAKKEN, KAREN ALINE	10/22/2012	325.00
121300259	BARLOW, COLLEEN MARIE	10/22/2012	109.15
121300260	BERG, BARBARA DIANE	10/22/2012	206.13
121300261	BLANSFIELD, CYNTHIA RENEE	10/22/2012	34.97
121300262	BOLEN, PAMELA M	10/22/2012	16.73
121300263	BROWN, KAREN L	10/22/2012	118.49
121300264	BURNHAM, DOUGLAS PAUL	10/22/2012	14.88
121300265	BURT, TIFFANY ANN	10/22/2012	75.33
121300266	CAMPBELL, JULIE D	10/22/2012	33.63
121300267	CANO, JILLIAN	10/22/2012	34.80
121300268	CARRIZOSA, CARLA	10/22/2012	95.78
121300269	DEBOLT, JULIE LYNN	10/22/2012	2,500.00
121300270	DUPUY, ANDREA	10/22/2012	6.94
121300271	EASLEY, DAVID PAUL	10/22/2012	76.64
121300272	ECKELMAN, MONTE F	10/22/2012	66.05

Check Nbr	Vendor Name	Check Date	Check Amount
121300273	ERICKSON, SEASAN	10/22/2012	29.43
121300274	ES SPEECH & LANGUAGE SERVICES	10/22/2012	2,250.00
121300275	FAWVER, RICHARD ALLEN	10/22/2012	60.94
121300276	GALLAGHER, LINDSEY KAY	10/22/2012	44.96
121300277	GRAFSTROM, KYLE ALLEN	10/22/2012	33.52
121300278	HARRIS, HEIDI NIKOE	10/22/2012	2,500.00
121300279	HARTT, SAMUEL TIMOTHY	10/22/2012	35.00
121300280	HERING-PHILLIPS, CAROL S	10/22/2012	2.00
121300281	HERSHBERGER, KRISTIN	10/22/2012	16.65
121300282	HOLLOMAN, LEONARD E	10/22/2012	196.94
121300283	HUMPAGE, THOMAS FRANCIS	10/22/2012	19.43
121300284	HUYLAR, MICHAEL TODD	10/22/2012	18.00
121300285	JACOBSMA, AMANDA CHRISTINE	10/22/2012	80.09
121300286	JONES, MARLENE CATHERINE	10/22/2012	49.78
121300287	JUNELL, KATARINA ANNA	10/22/2012	26.97
121300288	KEBBA, NOREEN A	10/22/2012	72.01
121300289	KELLY KENNEDY, ERIKA	10/22/2012	39.18
121300290	KIM, MIRA	10/22/2012	15.48
121300291	KING, DEYANNA JO	10/22/2012	14.95
121300292	KINKELA, MERILEE	10/22/2012	53.72
121300293	LALLY, TONI MARIE	10/22/2012	110.62
121300294	LAM, TAN VAN	10/22/2012	35.85
121300295	LASKEY, SAMANTHA MEHAFFEY	10/22/2012	27.20
121300296	LEVERTON, ANDREA LYNN	10/22/2012	43.68
121300297	LORENZ TSUJIKAWA, LAUREL	10/22/2012	18.87

Check Nbr	Vendor Name	Check Date	Check Amount
121300298	LUKE, RODNEY JOHN	10/22/2012	92.13
121300299	MARAR, SVETLANA NIKOLAYEVNA	10/22/2012	58.93
121300300	MARRERO BURGOS, ZAYRA ENID	10/22/2012	38.96
121300301	MARTINSON, SHAWN A	10/22/2012	133.29
121300302	MCADAMS, ALISON	10/22/2012	21.48
121300303	MEAD, STEVEN H	10/22/2012	35.00
121300304	MOORE, SHERRY S	10/22/2012	18.59
121300305	MULICK, PATRICK JAMES	10/22/2012	70.43
121300306	NELSON, JANICE BERK	10/22/2012	12.03
121300307	NOVOTNEY, SARAH N	10/22/2012	27.86
121300308	OLSON, JILL MARIE	10/22/2012	11.88
121300309	PETRIE, DELLA J	10/22/2012	41.74
121300310	PHAM, KIM LOAN THI	10/22/2012	8.28
121300311	POOL, LORRAINE M	10/22/2012	25.53
121300312	RANES, ATHENA MASSEA	10/22/2012	5.00
121300313	ROWE, ALESHA MARIE	10/22/2012	480.00
121300314	SAMUELSON, JENNIFER M	10/22/2012	49.23
121300315	SANDLAND, GINA M	10/22/2012	79.06
121300316	SANFORD, LORI K	10/22/2012	98.91
121300317	SAXON, JAN K	10/22/2012	44.29
121300318	SEELEY, MARY JO COLUCCIO	10/22/2012	21.58
121300319	SHAW, JUDITH JORDAN	10/22/2012	322.32
121300320	SHU-MINUTOLI, KAREN	10/22/2012	90.47
121300321	SMITH, SUSANNE J	10/22/2012	55.00
121300322	SONNEN, JENNIFER LYNN	10/22/2012	26.31

Check Nbr	Vendor Name	Check Date	Check Amount
121300323	SPENCE, AMY REBECCA	10/22/2012	29.55
121300324	TAPP, NANCY E	10/22/2012	30.72
121300325	TURNER, MEGAN DENISE	10/22/2012	32.35
121300326	TYSON, BRITTANY BELL JEAN	10/22/2012	22.92
121300327	US BANK CORP PAYMENT SYSTEMS P	10/22/2012	12,469.98
121300328	US BANK CORP PAYMENT SYSTEM TR	10/22/2012	2,958.03
121300329	VIEN, NEIL A	10/22/2012	15.54
121300330	WARNER, SHELLEY S	10/22/2012	53.28
121300331	ZALDIVAR, MELISA K	10/22/2012	26.58
121300332	US BANK CORP PAYMENT SYSTEMS P	10/22/2012	9,534.05
121300333	AUBURN RIVERSIDE HIGH SCHOOL I	10/22/2012	3,084.99
121300334	AUBURN SENIOR HIGH IMPREST	10/22/2012	565.73
121300335	CARNEY, ORLYN M	10/22/2012	27.30
121300336	CHEW JR, CHARLES R	10/22/2012	51.65
121300337	COCKCROFT, ELSBETH CATHERINE	10/22/2012	127.86
121300338	JACOBS, LORI DAWN	10/22/2012	194.06
121300339	MAY, JONNA G	10/22/2012	99.16
121300340	PIZZA TIME	10/22/2012	2,428.06
121300341	PRICE, CHRISTY ANNE	10/22/2012	41.90
121300342	ROWE, ALESHA MARIE	10/22/2012	29.75
121300343	THOMAS, JANA DARLENE	10/22/2012	86.51
121300344	US BANK CORP PAYMENT SYSTEMS P	10/22/2012	24,846.45
121300345	US BANK CORP PAYMENT SYSTEM TR	10/22/2012	3,727.35
121300346	US BANK CORP PAYMENT SYSTEMS P	10/22/2012	1,150.85

Check Nbr	Vendor Name	Check Date	Check Amount
91	ACH	Check(s) For a Total of	76,271.31

	0	Manual	Checks For a Total of	0.00
	0	Wire Transfer	Checks For a Total of	0.00
	91	ACH	Checks For a Total of	76,271.31
	0	Computer	Checks For a Total of	0.00
Total For	91	Manual, Wire Tran, ACH & Computer Checks		76,271.31
Less	0	Voided	Checks For a Total of	0.00
		Net Amount		76,271.31

F U N D S U M M A R Y

Fund	Description	Balance Sheet	Revenue	Expense	Total
10	General Fund	3,230.74	0.00	27,044.90	30,275.64
20	Capital Projects	0.00	0.00	9,534.05	9,534.05
40	ASB Fund	-1,026.84	0.00	36,337.61	35,310.77
70	Private Purpose	0.00	0.00	1,150.85	1,150.85

AUBURN SCHOOL DISTRICT NO. 408

FINANCIAL STATEMENTS
FOR
AUGUST , 2012

AUBURN SCHOOL DISTRICT NO. 408
MONTHLY FINANCIAL REPORTS
TABLE OF CONTENTS

- I. Combined Balance Sheet
 - A. Governmental Funds
 - B. Trust Funds and Account Groups
- II. Budget Status Reports
 - A. General Fund
 - B. Transportation Vehicle Fund
 - C. Capital Projects Fund
 - D. Debt Service Fund
 - E. ASB Fund
 - 1. High Schools
 - 2. Middle Schools
- III. Private Purpose Trust Fund Statement
- IV. NBN Employee Benefits Trust Fund Statement
- V. Local Grants

AUBURN SCHOOL DISTRICT NO. 408
BALANCE SHEETS - GOVERNMENTAL FUNDS
AUGUST 31, 2012

	GENERAL	TRANSPORT VEHICLE	CAPITAL PROJECTS	DEBT SERVICE	ASB
ASSETS					
Cash and cash equivalents	10,979,162	1,643,981	24,519,120	2,006,840	1,697,322
Restricted Cash	47,748	5,874	206,014	63,985	9,299
Property taxes receivable	15,257,600	1,692	5,902,126	4,074,275	
Accounts receivable	114,592				749
Interest receivable	4,805	701	11,125	857	555
Due from other funds	2,458				
Due from other governments	1,113,695	1,216	174,347		
Inventory of supplies	350,059				
Prepaid Expenses	278,230				10,874
Total Assets	28,148,349	1,653,464	30,812,732	6,145,957	1,718,799
LIABILITIES and EQUITY					
Liabilities:					
Accounts payable	2,056,896		2,081,292		24,426
Estimated Unemployment Payable	208,775				
Due to other governments	102,819	3,237	113,514	35,256	5,124
Due to other funds			139		2,319
Deferred revenue	15,654,876	1,691	5,908,235	4,074,275	260,313
Total Liabilities	18,023,366	4,928	8,103,180	4,109,531	292,182
Equity:					
Non Spendable Fund Bal--Inven	628,289				10,873
Restricted for Carryovers	918,365				
Restricted from Levy Proceeds			9,234,376		
Assigned to Contingencies	300,000				
Assigned to Other Purposes	1,800,000				
Assigned To Fund Purposes		1,648,536	13,475,176	2,036,426	1,415,744
Unassigned Fund Balance	6,478,329				
Total Equity	10,124,983	1,648,536	22,709,552	2,036,426	1,426,617
Total Liabilities and Equity	28,148,349	1,653,464	30,812,732	6,145,957	1,718,799

AUBURN SCHOOL DISTRICT NO. 408
BALANCE SHEETS - TRUST FUNDS AND ACCOUNT GROUPS
AUGUST 31, 2012

TRUST FUNDS		ACCOUNT GROUPS	
PRIV PURP TRUST	NBN EMPLOY BENEFITS	GENERAL FIXED ASSETS	GENERAL LONG-TERM DEBT

ASSETS

Cash and cash equivalents	567,989	88,761		
Restricted Cash	4,491	1,314		
Due from Other Funds				
Accounts receivable	2,000			
Interest receivable	274	31		
Fixed assets			322,457,665	
Other debits:				
Amount available in Debt Service Fund				2,036,426
Amount to be provided for retirement of general long-term obligations				87,874,539
Total Assets	574,754	90,106	322,457,665	89,910,965

LIABILITIES and EQUITY

Liabilities:

Accounts Payable	1,150	5,257		
Compensated absences payable				2,785,965
Due to other governments	2,474	724		
Due to Other Funds				
General obligation bonds payable				87,125,000
Total Liabilities	3,624	5,981	0	89,910,965

Equity:

Investment in general fixed assets			322,457,665	
Fund balances:				
Assigned To Fund Purposes	571,130	84,125		
Total Equity	571,130	84,125	322,457,665	0
Total Liabilities and Equity	574,754	90,106	322,457,665	89,910,965

Auburn School District No. 408
General Fund Budget Status Summary

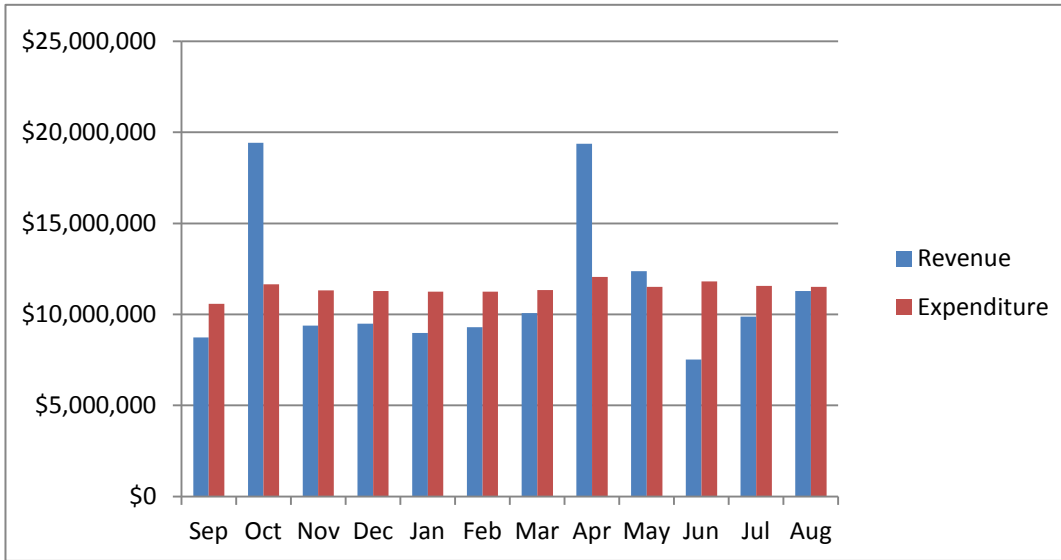
	REVENUE			EXPENDITURES			FUND BALANCE
Fiscal Year 2011-12	Average Cum %	Actual Cum %	Actual Monthly	Average Cum %	Actual Cum %**	Monthly Amount	Beginning 11,392,795
September	6.89%	6.43%	8,740,233	11.31%	11.83%	10,582,228	9,550,799
October	19.18%	20.72%	19,421,444	19.79%	19.67%	11,656,101	17,316,142
November	26.62%	27.63%	9,389,780	27.09%	27.11%	11,309,805	15,396,117
December	34.14%	34.62%	9,491,855	34.53%	34.84%	11,288,455	13,599,518
January	41.61%	41.22%	8,970,667	42.24%	42.49%	11,245,611	11,324,574
February	49.19%	48.10%	9,299,550	49.92%	49.97%	11,248,476	9,375,648
March	56.93%	55.48%	10,077,486	57.68%	57.48%	11,328,341	8,124,793
April	70.31%	69.73%	19,369,054	66.23%	65.44%	12,049,196	15,444,651
May	78.44%	78.84%	12,375,948	73.92%	73.22%	11,503,509	16,317,090
June	83.89%	84.38%	7,525,561	81.49%	81.20%	11,805,349	12,037,302
July	91.42%	91.64%	9,873,059	89.41%	88.91%	11,566,272	10,344,090
August	99.94%	99.96%	11,287,273	96.82%	96.16%	11,506,380	10,124,983
			Revenue			Expenditure	Fund Balance
Anticipated - First Budget			135,890,337			142,565,696	3,530,281
Actual - At Fiscal Year End			135,821,909			137,089,722	10,124,983

	REVENUE			EXPENDITURES			FUND BALANCE
Fiscal Year 2010-11	Average Cum %	Actual Cum %	Actual Monthly	Average Cum %	Actual Cum %**	Monthly Amount	Beginning 10,908,255
September	6.98%	6.38%	8,804,575	11.40%	11.39%	10,431,521	9,281,309
October	19.06%	19.40%	17,941,765	19.88%	19.18%	11,561,822	15,661,252
November	26.73%	26.59%	9,948,992	27.18%	26.60%	11,270,063	14,340,180
December	34.01%	35.84%	12,760,684	34.61%	34.14%	10,888,967	16,211,897
January	41.54%	42.42%	9,087,371	42.28%	42.10%	11,069,170	14,230,099
February	49.25%	48.90%	8,949,646	50.13%	49.33%	11,391,935	11,787,809
March	57.11%	55.66%	9,317,554	57.79%	56.61%	11,384,179	9,721,184
April	70.22%	70.42%	20,371,541	66.36%	64.28%	11,418,693	18,674,032
May	78.66%	77.10%	9,225,647	74.06%	71.65%	10,622,601	17,277,078
June	84.11%	82.30%	7,168,709	81.65%	79.33%	11,629,690	12,816,097
July	91.68%	89.56%	10,027,581	89.65%	86.81%	11,445,107	11,398,571
August	100.20%	97.99%	11,636,866	97.10%	94.18%	11,642,643	11,392,795
			Revenue			Expenditure	Fund Balance
Anticipated - First Budget			138,011,573			143,088,790	4,292,872
Actual - At Fiscal Year End			135,240,931			134,756,391	11,392,795

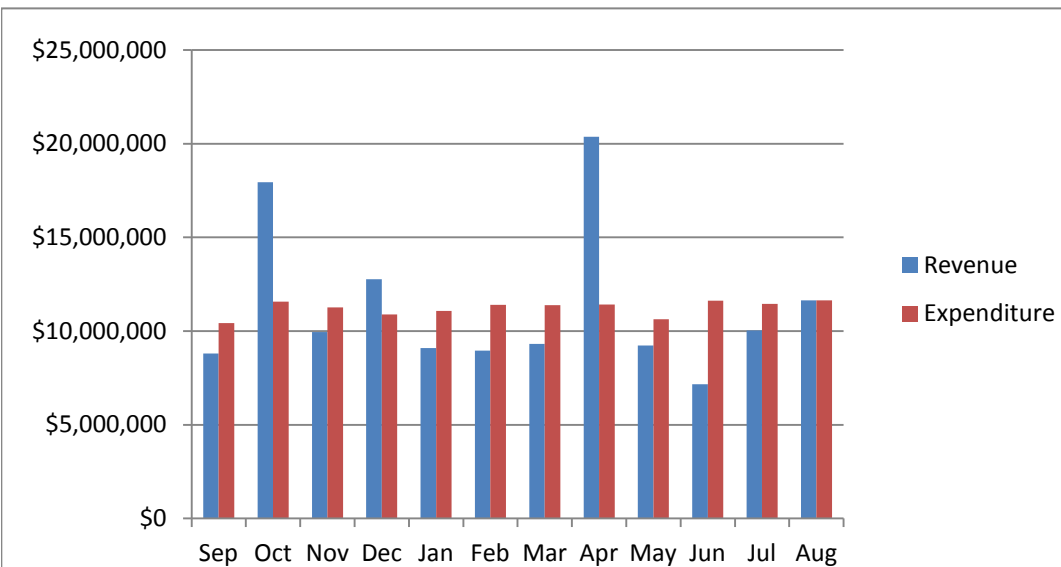
** Includes encumbrances.

AUBURN SCHOOL DISTRICT No. 408 GENERAL FUND

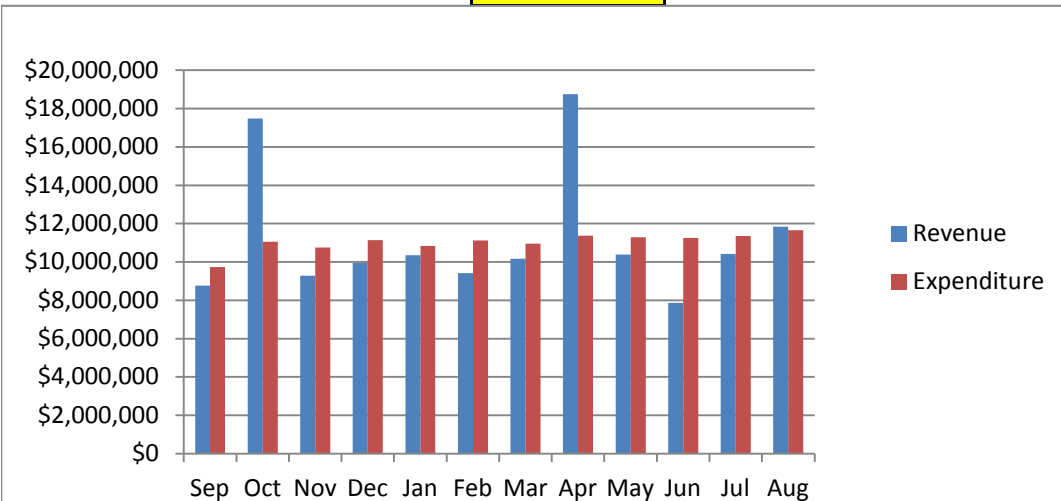
2011-12



2010-11



2009-10



Auburn School District No. 408
General Fund Budget Status
For the Month of August, 2012

	Annual Budget	Actual For Month	Total For Year	Encumbrance	Balance	Percent
TOTAL BEGINNING FUND BALANCE	\$ 10,205,640		11,392,795			
REVENUES AND OTHER FINANCING SOURCES						
1000 Local Taxes	29,483,879	105,651	29,578,400		(94,521)	100.32%
2000 Local Non-Tax	4,981,996	85,595	3,581,674		1,400,322	71.89%
3000 State, General Purpose	73,404,042	7,528,947	73,403,321		721	100.00%
4000 State, Special Purpose	15,104,746	1,593,088	15,224,477		(119,731)	100.79%
5000 Federal, General Purpose	146,916	-	133,197		13,719	90.66%
6000 Federal, Special Purpose	11,817,653	1,974,164	12,909,035		(1,091,382)	109.24%
7000 Revenues from Other District	848,405	(7,136)	970,806		(122,401)	114.43%
8000 Revenues from Other Agencies	102,700	300	4,500		98,200	4.38%
9000 Other Financing Sources	-	6,664	16,501		(16,501)	
Total Revenues & Other Finance Sources	135,890,337	11,287,273	135,821,910	-	68,427	99.95%
EXPENDITURES						
00 Regular Instruction	80,185,176	6,401,059	78,528,993	-	1,656,183	97.93%
10 Federal Stimulus	4,300	-	45,555	-	(41,255)	
20 Special Ed Instruction	16,570,310	1,271,311	16,643,184	-	(72,874)	100.44%
30 Vocational Instruction	6,248,403	479,017	5,526,095	-	722,308	88.44%
50&60 Compensatory Education	7,811,792	1,030,803	7,673,611	-	138,181	98.23%
70 Other Instructional Pgms	2,078,208	127,134	1,006,559	-	1,071,649	48.43%
80 Community Services	1,134,470	265,057	910,785	-	223,685	80.28%
90 Community Services	28,533,037	1,932,000	26,754,940	-	1,778,097	93.77%
Total Expenditures	142,565,696	11,506,380	137,089,722	-	5,475,974	96.16%
Excess Revenues/Other Financing Sources Over (under) Expend & Oth Financing Uses	(6,675,359)	(219,107)	(1,267,812)			
Total Ending Fund Balance	\$ 3,530,281		10,124,983			
Ending Fund Balance Accounts						
GL 821 Restricted for Carryovers	750,000		918,365			
GL 840 Nonspendable Fund Bal - Inv	750,000		628,289			
GL 875 Unrsrvd Dsgntd-Conting	1,300,000		300,000			
GL 888 Assigned to Other Purposes	600,000		1,800,000			
GL 890 UnRsrvd Undsgntd Fnd Bal	130,281		6,478,329			
Total Ending Fund Balance	\$ 3,530,281		\$ 10,124,983			

Auburn School District No. 408
Transportation Vehicle Fund Budget Status
For the Month of August, 2012

	Annual Budget	Actual For Month	Total For Year	Encumb	Balance	Percent
TOTAL BEGINNING FUND BALANCE	\$ 940,716		\$ 946,951			
REVENUES AND OTHER FINANCING SOURCES						
1000 Local Taxes		75	248		248	0.00%
2000 Local Non-Tax	5,736	1,578	8,878	-	3,142	154.78%
3000 State, General Purpose		-	-	-	-	0.00%
4000 State, Special Purpose	520,000	-	671,092	-	151,092	129.06%
5000 Federal, General Purpose	-	-	-	-	-	0.00%
8000 Revenues from Other Agencies	-	-	-	-	-	0.00%
9000 Others Financing Sources	-	21,366	21,366	-	21,366	-
Total Revenues & Other Financing Sources	525,736	23,018	701,585	-	175,849	133.45%
EXPENDITURES						
Type 30 Equipment	1,465,000	-	-	-	1,465,000	0.00%
Total Expenditures	1,465,000	-	-	-	1,465,000	0.00%
Excess Revenues/Other Financing Sources Over (under) Expend & Oth Financing Uses	(939,264)	23,018	701,585			
Total Ending Fund Balance	<u>\$ 1,452</u>		<u>\$ 1,648,536</u>			
Ending Fund Balance Accounts						
GL 889 Assigned to Special Fund Purposes	1,452	-	1,648,536			
GL 890 UnRsrvd Undsgntd Fnd Bal			-			
Total Ending Fund Balance	<u>\$ 1,452</u>		<u>\$ 1,648,536</u>			

Auburn School District No. 408
Capital Projects Fund Budget Status
For the Month of August , 2012

	Annual Budget	Actual For Month	Total For Year	Encumbrance	Balance	Percent
TOTAL BEGINNING FUND BALANCE	\$ 23,284,583		\$ 21,021,279			
REVENUES AND OTHER FINANCING SOURCES						
1000 Local Taxes	12,633,674	40,332	12,593,236		40,438	99.68%
2000 Local Non-Tax	682,991	330,384	1,583,831		(900,840)	231.90%
3000 State, General Purpose	-		-		-	0.00%
4000 State, Special Purpose	1,300,000	-	1,300,000		-	100.00%
5000 Federal, General Purpose	-	-	-		-	0.00%
6000 Federal, Special Purpose	-	-	-		-	0.00%
7000 Revenues from Other District	-	-	-		-	0.00%
8000 Revenues from Other Agencies	-	-	-		-	0.00%
9000 Other Financing Sources	-	-	-		-	0.00%
Total Revenues & Other Financing Sources	14,616,665	370,716	15,477,066	-	(860,401)	105.89%
EXPENDITURES						
10 Sites	3,069,394	239,014	1,046,024	-	2,023,370	34.08%
20 Buildings	14,152,412	3,116,365	8,162,730	-	5,989,682	57.68%
30 Equipment	2,427,102	402,980	1,501,320	-	925,782	61.86%
40 Energy	4,401,092	342,079	3,078,720	-	1,322,372	69.95%
50 Sales & Lease Expenditures	-	-	-	-	-	0.00%
60 Bond Issuance Expenditures	-	-	-	-	-	0.00%
90 Debt	-	-	-	-	-	0.00%
Total Expenditures	24,050,000	4,100,438	13,788,793	-	10,261,207	57.33%
Excess Revenues/Other Financing Sources Over (under) Expend. & Oth Financing Uses	(9,433,335)	(3,729,722)	1,688,273			
Total Ending Fund Balance	<u>\$ 13,851,248</u>		<u>\$ 22,709,552</u>			
Ending Fund Balance Accounts						
GL861 Restricted from Bond Proceeds			-			
GL 862 Restricted from Levy Proceeds			9,234,376			
GL 865 Restricted from Other Proceeds	13,851,248		-			
GL 889 Assigned to Fund Purpose			13,475,176			
GL 890 UnRsrvd Undsgntd Fnd Bal	-		-			
Total Ending Fund Balance	<u>\$ 13,851,248</u>		<u>\$ 22,709,552</u>			

Auburn School District No. 408
Debt Service Fund Budget Status
For the Month of August, 2012

	Annual Budget	Actual For Month	Total Year	Encumbrance	Balance	Percent
TOTAL BEGINNING FUND BALANCE	\$ 2,248,202		\$ 2,075,963			
REVENUES AND OTHER FINANCING SOURCES						
1000 Local Taxes	7,927,201	29,582	7,951,648		(24,447)	100.31%
2000 Local Non-Tax	13,637	10,153	21,736		(8,099)	159.39%
3000 State, General Purpose	-	-	-		-	0.00%
5000 Federal, General Purpose	-	-	-		-	0.00%
6000 Federal, Special Purpose	-	-	-		-	0.00%
9000 Other Financing Sources	-	-	9,997,004		(9,997,004)	0.00%
Total Revenues & Other Financing Sources	7,940,838	39,734	17,970,389		(10,029,551)	226.30%
EXPENDITURES						
Matured Bond Expenditures	4,125,000	-	4,125,000		-	100.00%
Interest on Bonds	4,103,444	-	3,887,024		216,420	94.73%
Interfund Loan Interest	-	-	-		-	0.00%
Bond Transfer Fees	4,500	171	1,683		2,817	37.41%
Arbitrage Rebate	-	-	-		-	0.00%
Underwriter's fees	-	-	60,915		(60,915)	0.00%
Total Expenditures	8,232,944	171	8,074,622	-	158,322	98.08%
Other Financing Uses			9,935,303			
Excess Revenues/Other Financing Sources Over (under) Expend. & Oth Financing Uses	(292,106)	39,563	(39,536)			
Total Ending Fund Balance	\$ 1,956,096		\$ 2,036,426			
Ending Fund Balance Accounts						
GL 810 Reserved For Other Items	-		-			
GL 830 Reserved For Debt Service	-		-			
GL 889 Assigned to Fund Purposes	1,956,096		2,036,426			
GL 890 UnRsrvd Undsgntd Fnd Bal	-		-			
Total Ending Fund Balance	\$ 1,956,096		\$ 2,036,426			

Auburn School District No. 408
ASB Fund Budget Status
For the Month of August, 2012

Annual Budget	Actual For Month	Total for Year	Encumb	Balance	Percent
------------------	---------------------	----------------	--------	---------	---------

TOTAL BEGINNING FUND BALANCE \$ 948,856 \$ 1,369,623

REVENUES AND OTHER FINANCING SOURCES

1000 General Student Body	1,641,205	20,293	681,177		960,028	41.50%
2000 Athletics	202,200	705	178,438		23,762	88.25%
3000 Classes	301,070	4,865	132,822		168,248	44.12%
4000 Clubs	1,841,598	76,599	1,211,895		629,703	65.81%
6000 Private Moneys	96,660	100	50,867		45,793	52.63%

Total Revenues & Other Financing S	4,082,733	102,561	2,255,198	-	1,827,535	55.24%
------------------------------------	-----------	---------	-----------	---	-----------	--------

EXPENDITURES

1000 General Student Body	1,214,123	11,057	490,218	-	723,905	40.38%
2000 Athletics	340,494	12,400	283,976	-	56,518	83.40%
3000 Classes	346,733	9,589	139,618	-	207,115	40.27%
4000 Clubs	2,015,387	70,929	1,239,333	-	776,054	61.49%
6000 Private Moneys	109,647	1,103	45,060	-	64,587	41.10%

Total Expenditures	4,026,384	105,078	2,198,204	-	1,828,180	54.59%
--------------------	-----------	---------	-----------	---	-----------	--------

Excess Revenues/Other Financing Sources

Over (under) Expend. & Oth Financi	56,349	(2,517)	56,994
------------------------------------	--------	---------	--------

Total Ending Fund Balance	\$ 1,005,205	\$ 1,426,617
---------------------------	--------------	--------------

Ending Fund Balance Accounts

GL 840 Nonspendable Fund Bal		10,873
GL 889 Assigned to Fund Purposes	1,005,205	1,415,744

Total Ending Fund Balance	\$ 1,005,205	\$ 1,426,617
---------------------------	--------------	--------------

AUBURN SCHOOL DISTRICT No. 408
ASB FUND
AUGUST , 2012

HIGH SCHOOLS

	Auburn High	Auburn Mountainview	Auburn Riverside	West Auburn	TOTAL
BEGINNING BALANCE	\$ 249,672.74	\$ 250,867.15	\$ 392,647.53	\$ 13,324.29	\$ 906,511.71
REVENUES	\$ 564,265.10	\$ 606,640.08	\$ 574,125.27	\$ 2,306.67	\$ 1,747,337.12
EXPENDITURES					
General	\$ 50,152.26	\$ 141,099.13	\$ 101,482.04	\$ 1,453.65	\$ 294,187.08
Athletics	104,759.28	50,361.44	92,288.52	-	247,409.24
Classes	29,224.29	34,468.55	19,611.94	-	83,304.78
Clubs	369,895.69	367,514.91	356,235.68	2,190.01	1,095,836.29
Private Monies	12,632.99	5,255.60	13,136.08	384.37	31,409.04
TOTAL EXPENDITURES	\$ 566,664.51	\$ 598,699.63	\$ 582,754.26	\$ 4,028.03	\$ 1,752,146.43
TRANSFERS					
General	\$ 70,209.91	\$ 42,710.49	\$ 43,959.53	\$ 689.77	\$ 157,569.70
Athletics	(20,246.57)	(14,305.03)	(26,862.50)	-	(61,414.10)
Classes	(532.55)	1,900.05	13,359.01	-	14,726.51
Clubs	(49,245.79)	(31,485.49)	(30,456.04)	(689.77)	(111,877.09)
Private Monies	(185.00)	1,179.98	-	-	994.98
TOTAL TRANSFERS	\$ -	\$ -	\$ -	\$ -	\$ (0.00)
OVER/ (UNDER)	\$ (2,399.41)	\$ 7,940.45	\$ (8,628.99)	\$ (1,721.36)	\$ (4,809.31)
ENDING BALANCE	\$ 247,273.33	\$ 258,807.60	\$ 384,018.54	\$ 11,602.93	\$ 901,702.40

AUBURN SCHOOL DISTRICT No. 408
ASB FUND
JULY, 2012
MIDDLE SCHOOLS

	Cascade	Mt. Baker	Rainier	Olympic	TOTAL
BEGINNING BALANCE	\$ 69,123.93	\$ 39,974.63	\$ 73,823.60	\$ 81,937.48	\$ 264,859.64
REVENUES	\$ 67,831.03	\$ 73,807.11	\$ 93,554.20	\$ 70,305.17	\$ 305,497.51
EXPENDITURES					
General	\$ 25,507.16	\$ 11,401.77	\$ 15,130.47	\$ 21,781.07	\$ 73,820.47
Athletics	5,760.43	7,155.96	7,616.61	16,033.41	36,566.41
Classes	4,104.24	3,312.69	1,922.99	941.94	10,281.86
Clubs	26,037.51	36,221.24	56,690.87	18,446.29	137,395.91
Private Monies	2,514.47	3,494.86	635.33	2,060.57	8,705.23
TOTAL EXPENDITURES	\$ 63,923.81	\$ 61,586.52	\$ 81,996.27	\$ 59,263.28	\$ 266,769.88
TRANSFERS					
General	\$ 15,403.73	\$ 16,858.42	\$ 12,100.31	\$ 12,962.00	\$ 57,324.46
Athletics	(7,000.00)	(7,468.38)	(8,517.52)	(9,855.00)	(32,840.90)
Classes	(2,789.00)	(2,791.99)	(2,000.00)	(1,000.00)	(8,580.99)
Clubs	(5,614.73)	(6,598.05)	(1,582.79)	(2,107.00)	(15,902.57)
Private Monies	-	-	-	-	-
TOTAL TRANSFERS	\$ -	\$ -	\$ -	\$ -	\$ (0.00)
OVER/ (UNDER)	\$ 3,907.22	\$ 12,220.59	\$ 11,557.93	\$ 11,041.89	\$ 38,727.63
ENDING BALANCE	\$ 73,031.15	\$ 52,195.22	\$ 85,381.53	\$ 92,979.37	\$ 303,587.27

AUBURN SCHOOL DISTRICT NO. 408
PRIVATE PURPOSE TRUST FUND STATEMENT
AUGUST 31, 2012

REVENUES:

InvestED \$ 17,469

Scholarship Donations:

6079 AHS Alumni	\$ 1,374
7005 AHS Booster	3,967
6107 AHS Hanan	2,934
6018 AHS Jr Masonic	893
6008 AHS Kovacevich	23
6017 AHS Viscom	3
6027 Alta Shoemaker	419
6201 AMHS Booster	8,219
6066 AMHS Counselor	220
6100 AMHS Drama	300
6039 AMHS Masonic	1,592
6202 ARHS Booster	7,505
6065 ARHS Counseling	206
6038 ARHS Masonic	360
6073 ARHS Music	8
7004 ARHS Win Wishes	2,106
6203 Athletic Boosters	6
6016 Auburn Community Scholarship	15,259
6020 Auburn Womens	77
6050 Boeing Employees	681
6084 Bonnie Olson	668
7001 Brillault Book	4
6068 Burton/Moberg	161
6105 Culinary Arts	1,469
6003 Daan Ansingh	1,168
6006 Dan Benedett	10
6082 Dave Goethals	166
6087 Diamond In The Rough	51
6015 Dick Scobee Memorial	134
6071 Earl Price	29
6095 F & P Knudtson	4
6076 Hirose Memorial	108
6070 James P Fugate	25
6080 Jill Wilson	1,293
6083 Juan Huseby	4,013
6009 Judy Johnston	563
6078 Kathy Hoefert	503
6103 Linda Cowan	108
6004 Ludviksen Memorial	9
7002 McDonald Camp	21
6014 Michael Jackson	75
6002 Mollie Todd	29
7006 Native Am Student	20,070
6007 Pat Kuhlman	1,336
7003 Pioneer Shoe Fund	802
6012 Prof Tech/Classified	2,404
6024 Rotary	37,601
6026 Trapper	237
6108 Trimble	1,503
6088 Volney Wolters Memorial	2,019
6025 WAHS Wiley	5
6085 Walker Mens	163
6075 Wanda Hertlein	150
6089 Watt Memorial	307
6021 West Auburn	6

Total Scholarship Donations	123,366
Total Revenues	<u>140,835</u>
EXPENDITURES:	
InvestED	16,934
6079 AHS Alumni	1,500
6107 AHS Hanan	2,500
6018 AHS Jr Masonic	1,700
6008 AHS Kovacevich	400
6017 AHS Viscom	300
6027 Alta Shoemaker	1,800
6201 AMHS Booster	7,150
6099 AMHS Cheer	475
6066 AMHS Counselor	200
6039 AMHS Masonic	1,700
6202 ARHS Booster	8,000
6038 ARHS Masonic	1,100
6096 ARHS Volleyball	205
7004 ARHS Win Wishes	1,407
6016 Auburn Community Scholarship	17,165
6020 Auburn Women	2,000
6084 Bonnie Olson	500
7001 Brillault Book Fund	2,670
6068 Burton/Moberg	1,000
6105 Culinary Arts	2,000
6003 Daan Ansingh	1,100
6006 Dan Benedett	200
6082 Dave Goethals	1,000
6087 Diamond In The Rough	1,000
6086 Don Standley	1,000
6071 Earl Price	500
6095 F & P Knudtson	650
6076 Hirose Memorial	500
6070 James Fugate	500
6080 Jill Wilson	10,000
6083 Juan Huseby	4,000
6009 Judy Johnston	1,000
6103 Linda Cowan	500
6004 Ludviksen	250
6014 Michael Jackson	500
6002 Mollie Todd	1,000
7006 Native Am Student	4,024
6007 Pat Kuhlman	300
7003 Pioneer Shoe Fund	501
6012 Prof Tech/Classified	2,400
6024 Rotary	35,500
6026 Trapper	3,000
6108 Trimble	1,500
6088 Volney Wolters	800
6025 WAHS Wiley	1,000
6085 Walker Mens	1,000
6075 Wanda Hertlein	500
6089 Watt Memorial	700
Total Expenditures	<u>145,631</u>
Excess of Revenue over (under) Expenditure	-4,796
Fund Balance - Beginning of the Year	<u>575,926</u>
Fund Balance - Year to Date	<u>\$ 571,130</u>

AUBURN SCHOOL DISTRICT NO 408
NBN Employee Benefits Trust Fund Statement
August 31, 2012

ADDITIONS:

Contributions from Plan Members	\$ 155,053.46
Investment Earnings	<u>717.77</u>
Total Additions	<u>155,771.23</u>

DEDUCTIONS:

Benefits Claims	201,740.33
State Program Fees	<u>700.00</u>
Total Deductions	<u>202,440.33</u>

NET DEDUCTIONS (46,669.10)

Net Assets at Beginning of Year 130,794.11

Net Assets Year To Date \$ 84,125.01

AUBURN SCHOOL DISTRICT NO. 408
Local Grants Received in August, 2012

Donor	Recipient	Amount
Cartridges for Kids	Hazelwood	\$28.85
Communités In Schools	Gildo Rey	\$1,786.46
Communités In Schools	Terminal Park	\$2,306.61
Community for Educ Results	ASD	\$10,000.00
Escrip	ARHS	\$114.22
Gates Foundation	ASD	\$36,051.21
Horizon Research	Hazelwood	\$50.00
LaWanda Cartwright	ASD	\$300.00
Misc	Chinook	\$4.85
Misc	Washington	\$100.00
Mucklesoot Foundation	Chinook	\$10,000.00
Pemco Foundation	AHS	\$5,000.00
Pioneer Teachers	Pioneer	\$84.20
PTA	Gildo Rey	\$600.00
Target	Cascade	\$138.29
Target	Hazelwood	\$357.05
Terracycle	Chinook	\$65.30
United Way	ASD	\$2,518.00
USAGAIN	Hazelwood	\$50.00
USAGAIN	Ilalko	\$14.62
USAGAIN	Evergreen	\$26.05
USAGAIN	Rainier	\$50.00
Total		<u><u>\$69,645.71</u></u>

AUBURN SCHOOL DISTRICT NO. 408

FINANCIAL STATEMENTS
FOR
SEPTEMBER , 2012

AUBURN SCHOOL DISTRICT NO. 408
MONTHLY FINANCIAL REPORTS
TABLE OF CONTENTS

- I. Combined Balance Sheet
 - A. Governmental Funds
 - B. Trust Funds and Account Groups
- II. Budget Status Reports
 - A. General Fund
 - B. Transportation Vehicle Fund
 - C. Capital Projects Fund
 - D. Debt Service Fund
 - E. ASB Fund
 - 1. High Schools
 - 2. Middle Schools
- III. Private Purpose Trust Fund Statement
- IV. NBN Employee Benefits Trust Fund Statement
- V. Local Grants

AUBURN SCHOOL DISTRICT NO. 408
BALANCE SHEETS - GOVERNMENTAL FUNDS
SEPTEMBER 30, 2012

	GENERAL	TRANSPORT VEHICLE	CAPITAL PROJECTS	DEBT SERVICE	ASB
ASSETS					
Cash and cash equivalents	9,671,606	1,646,214	22,780,371	2,125,631	1,785,236
Restricted Cash	47,270	5,819	204,069	63,352	9,207
Property taxes receivable	14,839,565	1,675	5,740,635	3,963,202	
Accounts receivable	517,734				749
Interest receivable					
Due from other funds	1,633				
Due from other governments	156,552		21,126		
Inventory of supplies	308,989				
Total Assets	25,543,349	1,653,708	28,746,201	6,152,185	1,795,192
LIABILITIES and EQUITY					
Liabilities:					
Accounts payable	1,332,268		123,752		14,724
Estimated Unemployment Payable	208,775				
Due to other governments	102,819	3,237	113,514	35,255	5,124
Due to other funds					1,633
Deferred revenue	15,179,450	1,675	5,748,028	3,963,203	
Total Liabilities	16,823,312	4,912	5,985,294	3,998,458	21,481
Equity:					
Non Spendable Fund Bal--Inven	628,289				
Restricted for Food Services	918,365				
Restricted from Levy Proceeds			9,278,913		
Restricted for Fund Purpose					1,773,711
Restricted to Debt Service				2,153,727	
Assigned to Contingencies	300,000				
Assigned to Other Purposes	1,800,000				
Assigned To Fund Purposes		1,648,796	13,481,994		
Unassigned Fund Balance	5,073,383				
Total Equity	8,720,037	1,648,796	22,760,907	2,153,727	1,773,711
Total Liabilities and Equity	25,543,349	1,653,708	28,746,201	6,152,185	1,795,192

AUBURN SCHOOL DISTRICT NO. 408
BALANCE SHEETS - TRUST FUNDS AND ACCOUNT GROUPS
SEPTEMBER 30, 2012

TRUST FUNDS		ACCOUNT GROUPS	
PRIV PURP TRUST	NBN EMPLOY BENEFITS	GENERAL FIXED ASSETS	GENERAL LONG-TERM DEBT

ASSETS

Cash and cash equivalents	576,235	77,786		
Restricted Cash	4,447	1,302		
Accounts receivable	2,000			
Interest receivable				
Fixed assets			322,457,665	
Other debits:				
Amount available in Debt Service Fund				2,153,727
Amount to be provided for retirement of general long-term obligations				87,757,238
Total Assets	582,682	79,088	322,457,665	89,910,965

LIABILITIES and EQUITY

Liabilities:

Compensated absences payable				2,785,965
Due to other governments	2,474	724		
General obligation bonds payable				87,125,000
Total Liabilities	2,474	724	0	89,910,965

Equity:

Investment in general fixed assets			322,457,665	
Fund balances:				
Assigned To Fund Purposes	580,208	78,364		
Total Equity	580,208	78,364	322,457,665	0
Total Liabilities and Equity	582,682	79,088	322,457,665	89,910,965

Auburn School District No. 408
General Fund Budget Status Summary

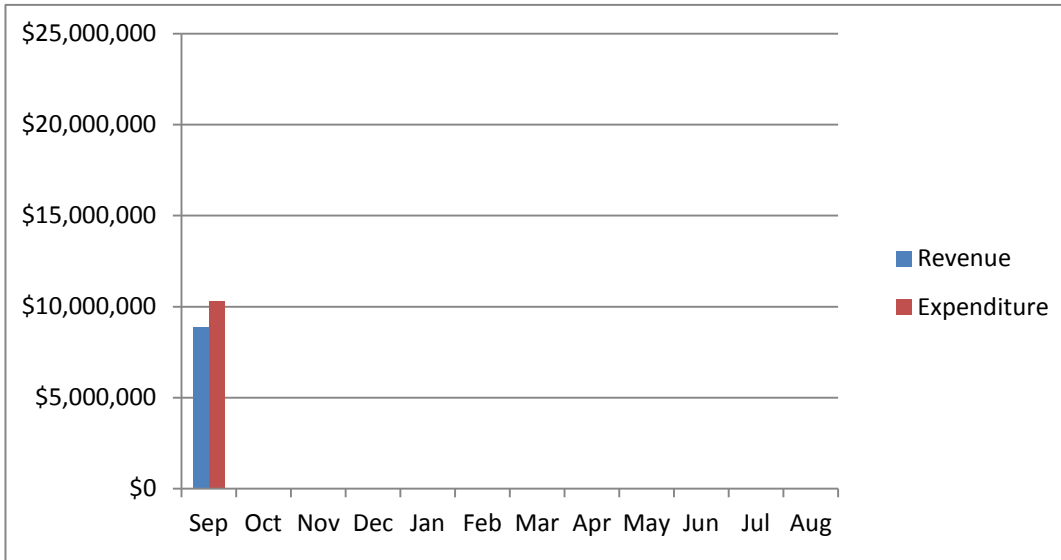
	REVENUE			EXPENDITURES			FUND BALANCE
Fiscal Year 2012-13	Average Cum %	Actual Cum %	Actual Monthly	Average Cum %	Actual Cum %**	Monthly Amount	Beginning 10,124,983
September	6.82%	6.42%	8,900,174	11.29%	11.34%	10,305,120	8,720,037
October	19.42%			19.75%			
November	26.65%			27.06%			
December	34.17%			34.56%			
January	41.52%			42.30%			
February	48.99%			49.97%			
March	56.68%			57.72%			
April	70.29%			66.29%			
May	78.42%			73.99%			
June	83.89%			81.58%			
July	91.43%			89.52%			
August	99.98%			96.92%			
			Revenue				Expenditure Fund Balance
Anticipated - First Budget			138,577,729				143,182,856 4,696,764

	REVENUE			EXPENDITURES			FUND BALANCE
Fiscal Year 2011-12	Average Cum %	Actual Cum %	Actual Monthly	Average Cum %	Actual Cum %**	Monthly Amount	Beginning 11,392,795
September	6.89%	6.43%	8,740,233	11.31%	11.83%	10,582,228	9,550,799
October	19.18%	20.72%	19,421,444	19.79%	19.67%	11,656,101	17,316,142
November	26.62%	27.63%	9,389,780	27.09%	27.11%	11,309,805	15,396,117
December	34.14%	34.62%	9,491,855	34.53%	34.84%	11,288,455	13,599,518
January	41.61%	41.22%	8,970,667	42.24%	42.49%	11,245,611	11,324,574
February	49.19%	48.10%	9,299,550	49.92%	49.97%	11,248,476	9,375,648
March	56.93%	55.48%	10,077,486	57.68%	57.48%	11,328,341	8,124,793
April	70.31%	69.73%	19,369,054	66.23%	65.44%	12,049,196	15,444,651
May	78.44%	78.84%	12,375,948	73.92%	73.22%	11,503,509	16,317,090
June	83.89%	84.38%	7,525,561	81.49%	81.20%	11,805,349	12,037,302
July	91.42%	91.64%	9,873,059	89.41%	88.91%	11,566,272	10,344,090
August	99.94%	99.96%	11,287,273	96.82%	96.16%	11,506,380	10,124,983
			Revenue				Expenditure Fund Balance
Anticipated - First Budget			135,890,337				142,565,696 3,530,281
Actual - At Fiscal Year End			135,821,910				137,089,723 10,124,983

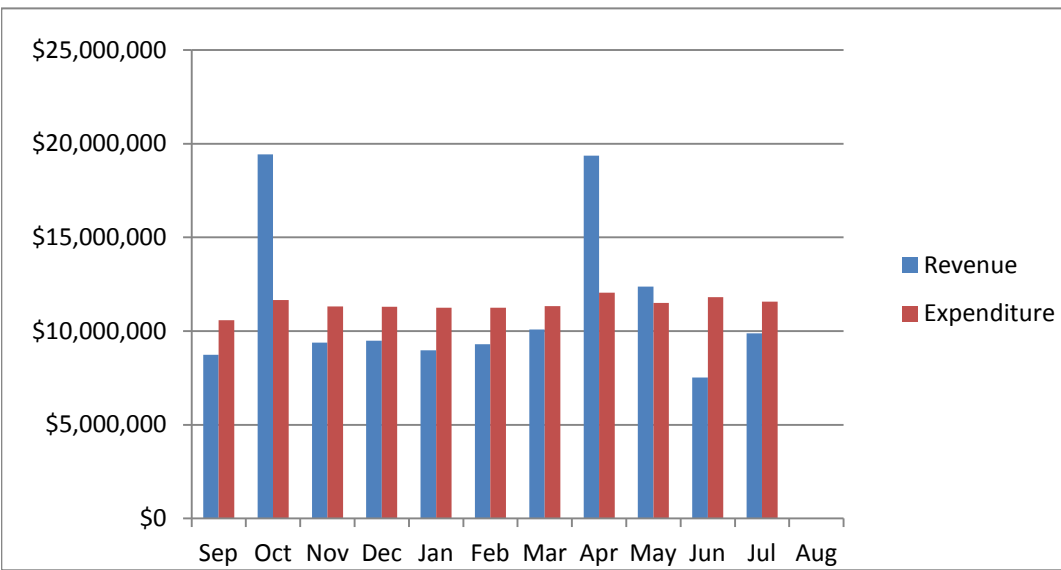
** Includes encumbrances.

AUBURN SCHOOL DISTRICT No. 408 GENERAL FUND

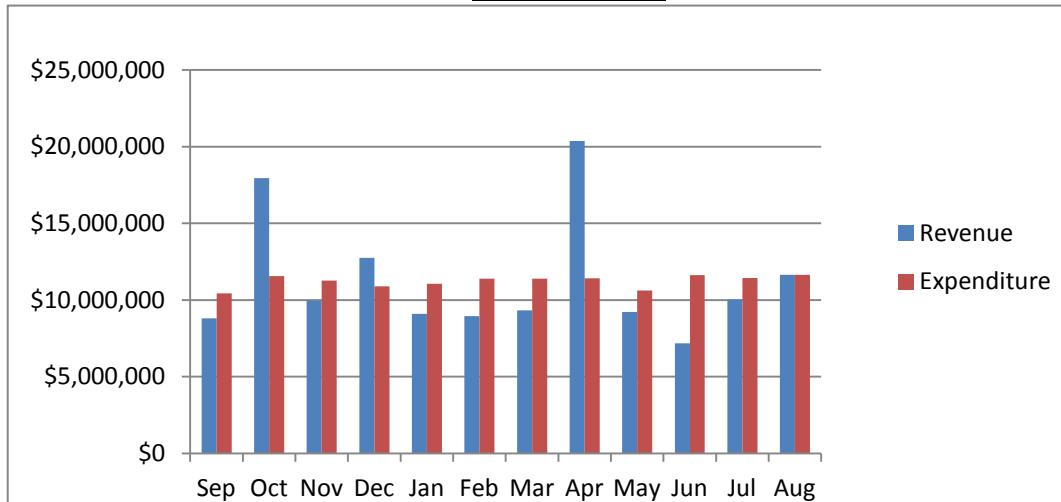
2012-13



2011-12



2010-11



Auburn School District No. 408
General Fund Budget Status
For the Month of September, 2012

	Annual Budget	Actual For Month	Total For Year	Encumbrance	Balance	Percent
TOTAL BEGINNING FUND BALANCE	\$ 9,301,891		10,124,983			
REVENUES AND OTHER FINANCING SOURCES						
1000 Local Taxes	30,258,960	439,639	439,639		29,819,321	1.45%
2000 Local Non-Tax	5,238,691	328,705	328,705		4,909,986	6.27%
3000 State, General Purpose	74,533,120	6,413,751	6,413,751		68,119,369	8.61%
4000 State, Special Purpose	15,210,010	1,316,579	1,316,579		13,893,431	8.66%
5000 Federal, General Purpose	107,000	-	-		107,000	0.00%
6000 Federal, Special Purpose	12,345,979	401,500	401,500		11,944,479	3.25%
7000 Revenues from Other District	781,269	-	-		781,269	0.00%
8000 Revenues from Other Agencies	102,700	-	-		102,700	0.00%
9000 Other Financing Sources	-	-	-		-	
Total Revenues & Other Finance Sources	138,577,729	8,900,174	8,900,174	-	129,677,555	6.42%
EXPENDITURES						
00 Regular Instruction	80,136,062	6,587,785	6,587,785	64,529,549	9,018,727	88.75%
10 Federal Stimulus	-	-	-	-	-	
20 Special Ed Instruction	16,823,210	1,207,302	1,207,302	13,484,308	2,131,600	87.33%
30 Vocational Instruction	6,064,722	454,903	454,903	5,088,886	520,932	91.41%
50&60 Compensatory Education	7,617,531	514,299	514,299	5,411,875	1,691,357	77.80%
70 Other Instructional Pgms	2,113,612	49,171	49,171	293,135	1,771,306	16.20%
80 Community Services	1,178,478	43,265	43,265	378,118	757,095	35.76%
90 Community Services	29,249,241	1,448,395	1,448,395	17,205,211	10,595,635	63.77%
Total Expenditures	143,182,856	10,305,120	10,305,120	106,391,083	26,486,653	81.50%
Excess Revenues/Other Financing Sources Over (under) Expend & Oth Financing Uses	(4,605,127)	(1,404,946)	(1,404,946)			
Total Ending Fund Balance	\$ 4,696,764		8,720,037			
Ending Fund Balance Accounts						
GL 821 Restricted for Carryovers	750,000					
GL 828 Restricted for Food Services			918,365			
GL 840 Nonspendable Fund Bal - Inv	750,000		628,289			
GL 875 Unrsrvd Dsgntd-Conting	1,300,000		300,000			
GL 888 Assigned to Other Purposes	600,000		1,800,000			
GL 890 UnRsrvd Undsgntd Fnd Bal	1,296,764		5,073,383			
Total Ending Fund Balance	\$ 4,696,764		\$ 8,720,037			

Auburn School District No. 408
Transportation Vehicle Fund Budget Status
For the Month of September, 2012

Annual Budget	Actual For Month	Total For Year	Encumb	Balance	Percent
------------------	---------------------	-------------------	--------	---------	---------

TOTAL BEGINNING FUND BALANCE	\$ 1,622,358	\$ 1,648,536			
------------------------------	--------------	--------------	--	--	--

REVENUES AND OTHER FINANCING SOURCES

1000 Local Taxes	0	17	17	-	(17)	0.00%
2000 Local Non-Tax	10,087	243	243	-	9,844	2.41%
3000 State, General Purpose	0	-	-	-	-	0.00%
4000 State, Special Purpose	671,092	-	-	-	671,092	0.00%
5000 Federal, General Purpose	-	-	-	-	-	0.00%
8000 Revenues from Other Agencies	-	-	-	-	-	0.00%
9000 Others Financing Sources	-	-	-	-	-	

Total Revenues & Other Financing Sources	681,179	261	261	-	680,918	0.04%
--	---------	-----	-----	---	---------	-------

EXPENDITURES

Type 30 Equipment	2,303,500	-	-	-	2,303,500	0.00%
-------------------	-----------	---	---	---	-----------	-------

Total Expenditures	2,303,500	-	-	-	2,303,500	0.00%
--------------------	-----------	---	---	---	-----------	-------

Excess Revenues/Other Financing Sources

Over (under) Expend & Oth Financing Uses	(1,622,321)	261	261		
--	-------------	-----	-----	--	--

Total Ending Fund Balance	\$ 37	\$ 1,648,796
---------------------------	-------	--------------

Ending Fund Balance Accounts

GL 889 Assigned to Special Fund Purpose	37	-	1,648,796
---	----	---	-----------

GL 890 UnRsrvd Undsgntd Fnd Bal			-
---------------------------------	--	--	---

Total Ending Fund Balance	\$ 37	\$ 1,648,796
---------------------------	-------	--------------

Auburn School District No. 408
Capital Projects Fund Budget Status
For the Month of September, 2012

	Annual Budget	Actual For Month	Total For Year	Encumbrance	Balance	Percent
TOTAL BEGINNING FUND BALANCE	\$ 23,838,231		\$ 22,709,552			
REVENUES AND OTHER FINANCING SOURCES						
1000 Local Taxes	7,552,334	169,870	169,870		7,382,464	2.25%
2000 Local Non-Tax	945,128	16,027	16,027		929,101	1.70%
3000 State, General Purpose	-	-	-		-	0.00%
4000 State, Special Purpose	-	-	-		-	0.00%
5000 Federal, General Purpose	-	-	-		-	0.00%
6000 Federal, Special Purpose	-	-	-		-	0.00%
7000 Revenues from Other District	-	-	-		-	0.00%
8000 Revenues from Other Agencies	-	-	-		-	0.00%
9000 Other Financing Sources	-	-	-		-	0.00%
Total Revenues & Other Financing Sources	8,497,462	185,896	185,896	-	8,311,566	2.19%
EXPENDITURES						
10 Sites	2,910,000	-	-	-	2,910,000	0.00%
20 Buildings	26,300,000	51,017	51,017	33,785	26,215,198	0.32%
30 Equipment	2,090,000	75,952	75,952	145,344	1,868,704	10.59%
40 Energy	-	7,572	7,572	-	(7,572)	0.00%
50 Sales & Lease Expenditures	-	-	-	-	-	0.00%
60 Bond Issuance Expenditures	-	-	-	-	-	0.00%
90 Debt	-	-	-	-	-	0.00%
Total Expenditures	31,300,000	134,541	134,541	179,129	30,986,330	1.00%
Excess Revenues/Other Financing Sources Over (under) Expend. & Oth Financing Uses	(22,802,538)	51,355	51,355			
Total Ending Fund Balance	<u>\$ 1,035,693</u>		<u>\$ 22,760,907</u>			
Ending Fund Balance Accounts						
GL 861 Restricted from Bond Proceeds						
GL 862 Restricted from Levy Proceeds			9,278,913			
GL 865 Restricted from Other Proceeds						
GL 866 Restricted from Impact Fees						
GL 889 Assigned to Fund Purpose	1,035,693		13,481,994			
GL 890 UnRsrvd Undsgntd Fnd Bal						
Total Ending Fund Balance	<u>\$ 1,035,693</u>		<u>\$ 22,760,907</u>			

Auburn School District No. 408
Debt Service Fund Budget Status
For the Month of September, 2012

	Annual Budget	Actual For Month	Total Year	Encumbrance	Balance	Percent
TOTAL BEGINNING FUND BALANCE	\$ 4,668,578		\$ 2,036,426			
REVENUES AND OTHER FINANCING SOURCES						
1000 Local Taxes	7,927,201	116,776	116,776		7,810,425	1.47%
2000 Local Non-Tax	30,457	525	525		29,932	1.72%
3000 State, General Purpose	-	-	-		-	0.00%
5000 Federal, General Purpose	-	-	-		-	0.00%
6000 Federal, Special Purpose	-	-	-		-	0.00%
9000 Other Financing Sources	-	-	-		-	0.00%
Total Revenues & Other Financing Sources	7,957,658	117,301	117,301		7,840,357	1.47%
EXPENDITURES						
Matured Bond Expenditures	2,285,000	-	-	-	2,285,000	0.00%
Interest on Bonds	3,812,290	-	-	-	3,812,290	0.00%
Interfund Loan Interest	-	-	-	-	-	0.00%
Bond Transfer Fees	5,000	-	-	-	5,000	0.00%
Arbitrage Rebate	-	-	-	-	-	0.00%
Underwriter's fees	-	-	-	-	-	0.00%
Total Expenditures	6,102,290	-	-	-	6,102,290	0.00%
Other Financing Uses		-				
Excess Revenues/Other Financing Sources						
Over (under) Expend. & Oth Financing Uses	1,855,368	117,301	117,301			
Total Ending Fund Balance	\$ 6,523,946		\$ 2,153,727			
Ending Fund Balance Accounts						
GL 810 Reserved For Other Items	-		-			
GL 830 Reserved For Debt Service	-		2,153,727			
GL 889 Assigned to Fund Purposes	6,523,946					
GL 890 UnRsrvd Undsgntd Fnd Bal	-		-			
Total Ending Fund Balance	\$ 6,523,946		\$ 2,153,727			

Auburn School District No. 408
ASB Fund Budget Status
For the Month of September, 2012

	Annual Budget	Actual For Month	Total for Year	Encumb	Balance	Percent
TOTAL BEGINNING FUND BALANCE	\$ 957,531		\$ 1,415,744			
REVENUES AND OTHER FINANCING SOURCES						
1000 General Student Body	1,713,005	158,199	158,199		(1,554,806)	9.24%
2000 Athletics	256,617	31,804	31,804		(224,813)	12.39%
3000 Classes	280,880	9,000	9,000		(271,880)	3.20%
4000 Clubs	1,659,689	215,873	215,873		(1,443,816)	13.01%
6000 Private Moneys	109,660	995	995		(108,665)	0.91%
Total Revenues & Other Financing Sources	4,019,851	415,870	415,870	-	(3,603,981)	10.35%
EXPENDITURES						
1000 General Student Body	1,418,418	12,859	12,859	53,111	1,352,448	4.65%
2000 Athletics	311,258	13,971	13,971	15,066	282,221	9.33%
3000 Classes	292,571	2,949	2,949	1,050	288,572	1.37%
4000 Clubs	1,809,572	38,997	38,997	55,510	1,715,066	5.22%
6000 Private Moneys	111,060	-	-	-	111,060	0.00%
Total Expenditures	3,942,879	68,776	68,776	124,737	3,749,366	4.91%
Excess Revenues/Other Financing Sources Over (under) Expend. & Oth Financing Uses	76,972	347,094	347,094			
Total Ending Fund Balance	<u>\$ 1,034,503</u>		<u>\$ 1,762,838</u>			
Ending Fund Balance Accounts						
GL 819 Restricted for Fund Purpose	1,034,503.00		1,762,838			
GL 889 Assigned to Fund Purposes						
Total Ending Fund Balance	<u>\$ 1,034,503</u>		<u>\$ 1,762,838</u>			

AUBURN SCHOOL DISTRICT No. 408
ASB FUND
SEPTEMBER, 2012

HIGH SCHOOLS

	Auburn High	Auburn Mountainview	Auburn Riverside	West Auburn	TOTAL
BEGINNING BALANCE	\$ 247,273.33	\$ 258,807.60	\$ 384,018.54	\$ 11,602.93	\$ 901,702.40
REVENUES	\$ 89,182.13	\$ 129,868.40	\$ 124,926.71	\$ 20.01	\$ 343,997.25
EXPENDITURES					
General	\$ 3,572.21	\$ 2,772.42	\$ 2,098.66	\$ -	\$ 8,443.29
Athletics	12,596.57	1,347.69	-	-	13,944.26
Classes	394.23	1,117.45	1,430.28	-	2,941.96
Clubs	12,649.76	17,015.89	8,389.38	-	38,055.03
Private Monies	-	-	-	-	-
TOTAL EXPENDITURES	\$ 29,212.77	\$ 22,253.45	\$ 11,918.32	\$ -	\$ 63,384.54
TRANSFERS					
General	\$ -	\$ 16,886.40	\$ -	\$ -	\$ 16,886.40
Athletics	-	(16,830.00)	-	-	(16,830.00)
Classes	-	-	-	-	-
Clubs	-	(56.40)	-	-	(56.40)
Private Monies	-	-	-	-	-
TOTAL TRANSFERS	\$ -	\$ -	\$ -	\$ -	\$ 0.00
OVER/ (UNDER)	\$ 59,969.36	\$ 107,614.95	\$ 113,008.39	\$ 20.01	\$ 280,612.71
ENDING BALANCE	\$ 307,242.69	\$ 366,422.55	\$ 497,026.93	\$ 11,622.94	\$ 1,182,315.11

AUBURN SCHOOL DISTRICT No. 408
ASB FUND
SEPTEMBER, 2012
MIDDLE SCHOOLS

	Cascade	Mt. Baker	Rainier	Olympic	TOTAL
BEGINNING BALANCE	\$ 73,031.15	\$ 52,195.22	\$ 85,381.53	\$ 92,979.37	\$ 303,587.27
REVENUES	\$ 12,635.30	\$ 22,695.00	\$ 23,591.88	\$ 9,468.00	\$ 68,390.18
EXPENDITURES					
General	\$ 2,338.24	\$ 21.77	\$ 1,155.82	\$ 475.00	\$ 3,990.83
Athletics	-	-	27.02	-	27.02
Classes	-	-	-	7.12	7.12
Clubs	547.50	394.18	-	-	941.68
Private Monies	-	-	-	-	-
TOTAL EXPENDITURES	\$ 2,885.74	\$ 415.95	\$ 1,182.84	\$ 482.12	\$ 4,966.65
TRANSFERS					
General	\$ 10,575.00	\$ -	\$ 375.00	\$ -	\$ 10,950.00
Athletics	(6,000.00)	-	(100.00)	-	(6,100.00)
Classes	-	-	-	-	-
Clubs	(4,575.00)	-	(275.00)	-	(4,850.00)
Private Monies	-	-	-	-	-
TOTAL TRANSFERS	\$ -	\$ -	\$ -	\$ -	\$ -
OVER/ (UNDER)	\$ 9,749.56	\$ 22,279.05	\$ 22,409.04	\$ 8,985.88	\$ 63,423.53
ENDING BALANCE	\$ 82,780.71	\$ 74,474.27	\$ 107,790.57	\$ 101,965.25	\$ 367,010.80

AUBURN SCHOOL DISTRICT NO. 408
PRIVATE PURPOSE TRUST FUND STATEMENT
September 30, 2012

REVENUES:

InvestED	\$ 9,985
----------	----------

Scholarship Donations:

6086 Don Standley	500	
	<hr/>	
Total Scholarship Donations		500

Interest	<hr/>	124
Total Revenues		<hr/> <hr/> 10,609

EXPENDITURES:

InvestED	1,397
----------	-------

7005 AHS Booster Club	134	
Total Expenditures	<hr/>	1,531

Excess of Revenue over (under) Expenditure	9,078
--	-------

Fund Balance - Beginning of the Year	<hr/>	571,130
--------------------------------------	-------	---------

Fund Balance - Year to Date	<hr/> <hr/>	\$ 580,208
-----------------------------	-------------	------------

AUBURN SCHOOL DISTRICT NO 408
NBN Employee Benefits Trust Fund Statement
September 30, 2012

ADDITIONS:

Contributions from Plan Members	\$ 15,038.00
Investment Earnings	<u>24.87</u>
Total Additions	<u>15,062.87</u>

DEDUCTIONS:

Benefits Claims	20,824.41
State Program Fees	<u>-</u>
Total Deductions	<u>20,824.41</u>

NET DEDUCTIONS

(5,761.54)

Net Assets at Beginning of Year	<u>84,125.01</u>
Net Assets Year To Date	<u><u>\$ 78,363.47</u></u>

AUBURN SCHOOL DISTRICT NO. 408
Local Grants Received in September, 2012

Donor	Recipient	Amount
Action for Healthy Kids	AHS	\$3,250.00
D Luke	Lakeland Hills	\$325.00
Kevin Richstad	Lakeland Hills	\$98.00
Michelle Woolery	Lakeland Hills	\$2,936.00
Misc	Mt Baker	\$15.00
Muckleshoot Grant	Mt Baker	\$1,500.00
Music Matters	Mt Baker	\$134.40
PTA	A J Elementary	\$1,960.85
PTA	Evergreen	\$1,714.00
Target	AHS	\$213.19
Target	ARHS	\$151.82
Target	Evergreen	\$100.35
Target	Gildo Rey	\$119.27
Target	Ilalko	\$119.98
Target	Lake View	\$136.40
Target	Lakeland Hills	\$263.65
Target	Mt Baker	\$59.72
Target	Olympic	\$42.59
Target	Pioneer	\$149.63
Target	Rainier	\$85.34
Target	Terminal Park	\$142.03
Target	WAHS	\$31.94
Target	Washington	\$25.00
WAHS Don Wilson Shop	WAHS	\$42.50
WAHS Shop Class Reunion	WAHS	\$235.00
Total		<u><u>\$13,851.66</u></u>

Surplus Equipment List - 2013-1

5

<u>QTY</u>	<u>EQUIPMENT DESCRIPTION</u>	<u>STATUS</u>
	<u>Misc. Equipment & Furniture</u>	
4	A/V Carts - small	Beyond useful life
8	A/V Carts - tall	Beyond useful life
5	Book Carts - metal, rolling	Beyond useful life
1	Book Carts - wood, rolling	Beyond useful life
2	Bookcase, 3' x 4' x 1'	Beyond useful life
2	Cabinet, metal, 3' x 3', w/ 2 doors	Damaged beyond repair
4	Cabinet, wood, storage, 2' x 3'	Beyond useful life
2	Cabinet, wood, storage, 3' x 4', w/ 3 doors	Beyond useful life
11	Cabinet, wood, wall, 2' x 4', w/ 2 doors	Beyond useful life
2	Cabinet, wood, large rolling, multi-drawer	Damaged beyond repair
6	Cart, wood, rolling, 2' x 3'	Beyond useful life
4	Cart, metal, rolling, 2' x 3' x 3'	Beyond useful life
7	Chairs, folding, metal	Damaged beyond repair
33	Chairs, plastic-molded, medium	Beyond useful life
40	Chairs, plastic-molded, small	Beyond useful life
2	Chairs, stacking, padded, metal legs	Damaged beyond repair
12	Chairs, padded, rolling, office	Beyond useful life
4	Chairs, wood, padded	Beyond useful life
1	Computer Carts, metal	Damaged beyond repair
8	Computer Desk, wood, large	Beyond useful life
4	Computer Desks, metal, large, rolling	Beyond useful life
13	Computer Desks, metal, small	Beyond useful life
38	Computer Desks, metal, small, rolling	Beyond useful life
1	Dividers, padded, various sizes	Damaged beyond repair
5	File Cabinet - 2-drawer, regular	Beyond useful life
1	File Cabinet - 2-drawer, lateral	Damaged beyond repair
1	File Cabinet - 3 drawer, lateral	Beyond useful life
1	File Cabinet - 4 drawer, fire-proof, legal size	Beyond useful life
16	File Cabinet - 4-drawer, regular	Beyond useful life
1	Floor Scrubber, Windsor brand	Beyond useful life
1	Floor Sweeper, Advance brand	Beyond useful life
2	Floor vacuum, Advance, Link brand	Obsolete, replaced
2	Freezer, commercial, Hobart brand	Beyond useful life
1	Ice Maker - Cooler	Beyond useful life
1	Kiln, Electric	Beyond useful life
1	Kitchen Cabinet, Child Play Set	Beyond useful life
2	Kitchen Rolling Hot Storage Cart,	Beyond useful life
1	Kitchen, Wood Serving Cart	Damaged beyond repair
1	Meat Slicer, deli-style,	Beyond useful life
2	Microwave Ovens	Beyond useful life
2	Music Stack Rack	Damaged beyond repair
6	Music equipment, Drum cases	Damaged beyond repair
1	Oven - Commercial, w/stand, Blogett brand	Beyond useful life
1	Photo Enlargers, Besler Brand	Beyond useful life

Surplus Equipment List - 2013-1

5

<u>QTY</u>	<u>EQUIPMENT DESCRIPTION</u>	<u>STATUS</u>
1	Piano, Upright style, w/bench	Damaged beyond repair
3	Refrigerator, residential, various brands	Beyond useful life
1	Scale, balance beam-type	Damaged beyond repair
5	Sewing Machines, Bernette Brand	Beyond useful life
2	Sewing Machines, Singer Brand	Beyond useful life
2	Shelf unit, Library, metal, fixed	Damaged beyond repair
1	Sidewalk Sweeper, Advance Brand	Beyond useful life
2	Speakers, large wood cabinet	Damaged beyond repair
1	Stools, metal, padded	Damaged beyond repair
2	Student Chairs - wood/metal, small	Damaged beyond repair
60	Student Desks, combination	Beyond useful life
1	Student Desks, double wood	Beyond useful life
8	Student Desks, old-style, metal/wood	Beyond useful life
76	Student Desks, primary	Beyond useful life
2	Study Carrels, large, rolling	Beyond useful life
1	Study Carrels, small, rolling	Damaged beyond repair
2	Table, angle, wood	Damaged beyond repair
1	Table, Conference 4' x 10'	Damaged beyond repair
1	Table, computer - 2' x 4' , rolling	Beyond useful life
2	Table, end, wood, 2' x 2'	Beyond useful life
6	Table, folding, wood, 3' x 6'	Damaged beyond repair
4	Table, printer/Fax, small	Obsolete, replaced
1	Table, projection/tracing	Obsolete, replaced
4	Table, shop workstation w/vice	Beyond useful life
2	Table, typewriter	Beyond useful life
3	Table, wood, 2' x 4'	Beyond useful life
6	Table, wood, 2' x 5'	Beyond useful life
17	Table, wood, 3' x 5'	Beyond useful life
13	Table, wood, 3' x 6'	Beyond useful life
2	Table, wood, 4' x 8'	Beyond useful life
6	Table, wood, round, 48"	Beyond useful life
1	Table, wood, round, 60", folding	Damaged beyond repair
4	Table, wood, small student use	Beyond useful life
3	Table, wood, trapazoid, 2' x 4'	Beyond useful life
1	Table, wood, trapazoid, 4' x 8'	Damaged beyond repair
10	Teacher's Desk - metal, large	Beyond useful life
6	Teacher's Desk - metal, small	Beyond useful life
5	Teacher's Desk - wood, large	Damaged beyond repair
9	Teacher's Desk - wood, small	Damaged beyond repair
1	Toy Kitchen furniture (set)	Damaged beyond repair
6	Waste baskets, metal	Damaged beyond repair
1	Wheel Chair	Beyond useful life

Surplus Equipment List - 2013-1

5

<u>QTY</u>	<u>EQUIPMENT DESCRIPTION</u>	<u>STATUS</u>
	<u>Exercise & Sporting Equipment</u>	
2	Exercise Bike, Schwinn	Damaged, beyond repair
7	Gym Mats, folding, floor, 4' x 8'	Beyond useful life
1	Gymnastic parallel bars, set	Beyond useful life
1	Hip extension machine	Beyond useful life
1	Misc. Athletic equipment, (Box)	Damaged, beyond repair
1	Scoreboards, electronic, wall-mounted, large	Damaged, beyond repair
11	Tricycles, metal	Beyond useful life
1	Vaulting Horse, Gymnastics	Damaged, beyond repair
	<u>Shop Equipment & Tools</u>	
1	Scroll saw, Powermatic, Model: 95	Beyond useful life
	<u>Computers/Monitors/Printers/A-V Equipment</u>	
3	Alpha Smart Cart, w/ 25 Alpha Smarts	Obsolete, replaced
3	Camcorder - Panasonic VHS	Obsolete, replaced
6	Camcorder - Sony VHS	Obsolete, replaced
4	Cassette tape players, Aiwa, JVC, Panasonic	Beyond useful life
1	Copier - Konica, Model: 7022	Beyond useful life
1	Copier - Konica, Model: 7222	Beyond useful life
1	Copier - Konica, Model: 7222	Beyond useful life
1	Copier - Konica, Model: 7222	Beyond useful life
1	Copier - Konica, Model: 7222	Beyond useful life
1	Copier - Konica, Model: 7222	Beyond useful life
1	Copier - Sharp, Model:	Beyond useful life
24	CPU - Dell, Optiplex PC, GX270	Obsolete, replaced
216	CPU - Dell, Optiplex PC, GX620	Obsolete, replaced
490	CPU - Dell, Optiplex PC, GX745	Obsolete, replaced
6	CPU - Dell, PC Servers, Poweredge 2900	Obsolete, replaced
5	CPU - HP, PC Servers, ML350	Obsolete, replaced
1	CPU - Apple, PowerMac	Obsolete, replaced
3	CPU - HP NC 65156 Laptop	Obsolete, replaced
1	CPU - Lenovo, Laptop	Obsolete, replaced

Surplus Equipment List - 2013-1

5

<u>QTY</u>	<u>EQUIPMENT DESCRIPTION</u>	<u>STATUS</u>
1	Dictaphone Recorders - Sanyo - Memo-scriber	Beyond useful life
1	Docking ports - Compaq Laptop	Obsolete, replaced
2	DVD/VHS Player, Sony brand	Damaged beyond repair
1	DVD/VHS Player, Magnavox brand	Damaged beyond repair
1	Folding paper machine, Automatic	Beyond useful life
2	Laser disk, Pioneer	Beyond useful life
261	Monitors, CRT - 17"	Obsolete, replaced
257	Monitor, Flat-screen - 17"	Obsolete, replaced
3	Network Router Switch - Cisco Brand	Beyond useful life
7	Overhead Projectors - 3M	Obsolete, replaced
6	Printer - HP DeskJet - 600/650/660/670/680/692C	Obsolete, replaced
16	Printer - HP DeskJet - 6122/6940	Obsolete, replaced
12	Printer - HP DeskJet - 820/840/870/872/880/890C	Obsolete, replaced
14	Printer - HP DeskJet - 922/932C/940C/950C/960C	Obsolete, replaced
6	Printer - HP LaserJet 4+/4SI Network Printer	Obsolete, replaced
4	Printer - HP LaserJet 4000N Network Printer	Obsolete, replaced
1	Printer - HP LaserJet 4050N Network Printer	Obsolete, replaced
5	Printer - HP LaserJet 4100 Network Printer	Obsolete, replaced
12	Printer - HP LaserJet 4200/4250 Network Printer	Obsolete, replaced
1	Printer - HP LaserJet 4500/4550 Network Printer	Obsolete, replaced
1	Printer - HP LaserJet 5000N/5100 Network Printer	Obsolete, replaced
11	Printer - HP LaserJet 5SI/5M Network Printer	Obsolete, replaced
1	Printer - HP LaserJet 6P Network Printer	Obsolete, replaced
1	Printer - HP LaserJet III Network Printer	Obsolete, replaced
1	Projector - Bell & Howell Movie Projector	Damaged, beyond repair
1	Projector, Opaque Overhead, Da-Lite Brand	Damaged, beyond repair
5	Projector, Opaque Viewer, Aversvision Brand	Damaged, beyond repair
2	Projector, Viewer, Epson brand	Damaged, beyond repair
2	Projector, Viewer, HP Brand	Damaged, beyond repair
14	Projector, Viewer, LCD, Hitachi Brand	Damaged, beyond repair
2	Projector, Viewer, Optima Brand	Damaged, beyond repair
3	Radio - AM/FM/CD/Cassette Stereo	Damaged, beyond repair
14	Radio, 2-Way, Mobile, Fajitsu	Obsolete, replaced

Surplus Equipment List - 2013-1

5

<u>QTY</u>	<u>EQUIPMENT DESCRIPTION</u>	<u>STATUS</u>
5	Radio, 2-Way, Mobile, Uniden	Obsolete, replaced
48	Radio, 2-Way, Mobile, Midland	Obsolete, replaced
4	Radio, 2-Way, Mobile, Motorola	Obsolete, replaced
4	Radio, 2-Way, Portable, ICom	Obsolete, replaced
14	Radio, 2-Way, Portable, Motorola	Obsolete, replaced
1	Scanner - Epson GT10000	Obsolete, replaced
3	Scanner - HP ScanJet 5550/6100/7400/7740	Obsolete, replaced
1	Scanner - UMAX Astra 1220x/600s/2000/4000	Obsolete, replaced
3	TV - RCA - 27"	Damaged, beyond repair
2	TV - Sharp, 27" 32"	Damaged, beyond repair
1	TV - Symphonic, 30"	Damaged, beyond repair
2	TV - Zenith, 27", 32"	Damaged, beyond repair
12	UPS Power Supply Units, APC Brand	Beyond useful life
2	VCR -GE/Mitsubishi/ Video Recorder	Damaged, beyond repair
	<u>Books/Teaching Materials</u>	
640	Cirriculum books -	Obsolete, replaced
Cases	Math, English Literature, Social Studies, Science,	
	Biology, Physics, Reading, Accounting.	
	Almanacs, Writing, World History, American History,	
	Spanish, Health, Geography, Key Boarding,	
	Information Processing, Composition	
160	Library books -	Obsolete, replaced
Cases	Fiction, Non-Fiction, Encyclopidia Sets,	
1	World Globe, on stand	

1. Approval of Minutes

Recommendation: That the minutes be approved.

Recommendation: That the board president sign the final draft of the Race to the Top Grant.

Recommendation: That the above-mentioned revised policy be accepted for second reading and adoption.

Recommendation: That the board discuss and make a recommendation as to the date and/or time of the board meeting.

6. Executive Session

ROAD MAP REGION RACE TO THE TOP-DISTRICT APPLICATION

Road Map District Consortium: Summary Investment Proposal

Review Draft – October 4, 2012

INTRODUCTION AND OVERVIEW OF THE RTT-DISTRICT COMPETITION

About the RTT-D Competition. The US Department of Education (ED) has released its latest Race to the Top (RTT) competitive funding opportunity. Unlike the previous RTT competitions which were oriented toward states, this opportunity is directed at the local district level. Race to the Top-District (RTT-D) offers school districts, or consortiums of school districts, an opportunity to compete for up to \$40 million in grant funding, to be spent over four years. The application for the competition requires significant work to prepare, and has a very fast turnaround, with the application due on October 30, 2012.

Successful grant applications need to demonstrate that applicants have engaged stakeholders throughout the proposal development process. The grant requires that districts have approval from their School Board and union presidents and also builds in a review process for the state and local mayors. Community input is also required.

The Road Map Consortium is Competing. Leaders of the seven school districts in the Road Map region—South Seattle and South King County—have decided to compete together for this highly competitive RTT-D funding. Nearly 900 school districts and consortia from around the country have submitted Letters of Intent to compete for an expected 15-25 RTT-D grants.

Focus of the Competition. The RTT-D is oriented around several core RTT educational assurance areas: college- and career-ready standards and assessments; data systems to improve instruction; great teachers and leaders—including more comprehensive evaluation systems; turning around our lowest-achieving schools; and scalability and sustainability.

A major element of this competition is the focus on personalized learning. Successful applications must demonstrate personalized learning approaches as a foundation for their proposals. Additionally, US Department of Education wants to see proposals that build college and career ready graduates and emphasize the importance of personalization. Similar to the initial rounds of Race to the Top, the Department of Education wants districts to use P-20 data to track progress, have evaluation systems in place that use student growth data, and make efforts to ensure that high-needs students are receiving instruction from highly effective educators. You can find the RTT-D competition's Executive Summary here:

www2.ed.gov/programs/racetothetop-district/

ABOUT THE ROAD MAP DISTRICT CONSORTIUM

Districts Working Together. Since 2010, seven school districts have been working together toward a common goal, as part of the regional Road Map Project: Kent, Renton, Auburn, Highline, Federal Way, Seattle and Highline. The Road Map Project is a collective impact initiative aimed at doubling the number of students who are on track to earn a college degree or a career credential by 2020 and closing achievement gaps.

Focus on Students in Need. These seven districts serve the region's highest need, most diverse student populations. The 2010 census underscored the region's massive and rapid demographic transformation. Families and students are highly mobile, with large numbers of families moving from one school district to another, most often within the region. There is great diversity of languages spoken and many English-language learners, especially in the early grades, with 138 languages are spoken in one district alone. Clearly the region's cultural and language diversity is also a tremendous asset for a region as involved in international trade as the Puget Sound.

Providing Education that Enables Students to Obtain Knowledge-Based Jobs. While the region has growing rates of poverty, it also has significant economic opportunity for those with the education and skills to take advantage of the many new jobs being created. The region is home to one of the country's most knowledge intensive economies. Leading the nation in exports of both manufactured goods and intellectual property, the region has a voracious appetite for talent, which has predominantly been met by well-educated people from other states and countries relocating to the area, rather than by developing local potential. The Georgetown University Center on Education in the Workforce notes that, "by 2018, 67% of the jobs in Washington State will require a college degree or a career credential."

A Strong Framework in Place. The Road Map Project is fundamentally focused on equity. It aims to change the odds for children growing up in South King County. The Road Map Project has a full set of indicators of student success and has set interim performance targets for key metrics along the cradle to college and career continuum. Results are reported annually. Hundreds of people and organizations—in school and out—have also been involved in developing action plans. All of this work sets the region up with an excellent framework upon which to build the Race to the Top investment proposal. More information on the Road Map Project can be found at: www.roadmapproject.org

THE ROAD MAP DISTRICT CONSORTIUM APPROACH TO RTT-D

The Road Map District Consortium will apply for up to \$40 million with the promise of impacting at least 25,000 high-needs students. This investment will enable the region to make rapid progress on the region-wide Road Map Project goals. The investment proposal takes a cradle to college and career approach and focuses on strengthening the foundation of strong teachers and building system strength, especially at key transition points. The four core areas and seven projects for improving for student success identified in the proposal are:

- **Foundational:** (1) Supporting educator and leadership capacity building; (2) Developing a common regional data portal & data sharing agreements.
- **Start Strong:** (3) Developing a robust PreK-3 approach to securing the foundation for success in elementary school and later grades, ultimately enabling students to graduate high school, college and career ready.
- **STEM Strong:** (4) Expanding the use of digital STEM tools to personalize instruction; (5) Expanding career awareness, especially STEM-based opportunities.
- **Stay Strong:** (6) Strengthening student engagement, assessment, and counseling by investing in an integrated system of middle and high school counseling and advising, as well as adopting the College Board assessment system; (7) Increasing access to courses that deliver college and career readiness.

The Road Map District Consortium’s approach will:

- Build off the Road Map Project cradle to college/career collaborations and strategic framework, goal, metrics, and action plans in place;
- Build on strengths, successes and partnerships in the region;
- Take a systemic approach to driving dramatic improvement across the region;
- Incorporate a strong focus on personalized learning environments.

TAKING AN INVESTMENT APPROACH

This is a unique opportunity to request funds to build regional systemic strength and to avoid the typical “dividing up the pot” mentality. The Consortium recognizes that districts have different capacities and are at varying stages in reaching the Road Map Project goal. Therefore, to achieve maximum regional impact, several investment funds are being proposed, which would allow the consortium to be able to invest in carefully crafted and evaluated local proposals that taken to scale, will accelerate regional progress.



FOUNDATIONAL ELEMENTS

(P1) Educator and Leadership Capacity Building

(P2) Develop Common Regional Data Portal

Commitment: Teacher, Principal, and Superintendent Evaluations that take into account student growth

START STRONG: PreK-3 Approach

(P3) Adopt a Robust PreK-3rd Approach
System-wide

(DD) Deep Dives: Intensive Community
Partnership to Support Extended Day
Learning

Commitment: Summer Reading Plan Title I/ECEAP Schools

STEM STRONG

(P4) Expand the use of Digital Math Tools to Personalize Math Instruction

(P5) Expand Career Awareness, Especially STEM-based Opportunities

Commitment: Implement Next Generation Science Standards and Common Core

STAY STRONG: Achieve College and Career Readiness

*Commitment: Double Completion of
Algebra or Higher in 8th Grade*

(P6) Student Engagement, Assessment, and Counseling
(P6.A) Increase support for middle and
(P6.B) Adopt College Board suite

(P7) Expand College Credit-Bearing Courses

Commitment: High School and Beyond Plan completion that informs high school course offerings

PROJECT LIST – WORKING DRAFT

This preliminary draft document provides a list of projects and investments currently being considered for inclusion in the RTT-D application. This list is a work-in-progress and will change as additional work is completed and preliminary budgets give us a better sense of what investments we can afford to make via the grant. School demographics and performance data will also be considered in the refinement process.

The following two designations are used below:

(C) A commitment by the region’s seven districts to work toward a regional goal.

(P#) A project that will receive grant funding for implementation.

Project Selection Criteria. The following draft criteria are proposed as we continue to evaluate and select projects for inclusion in our grant application:

1. Criteria for System-wide Projects of Regional Significance

- Alignment with the region’s goals and improvement targets
- Strong project leadership
- Potential for high student impact, especially for low income students and students of color
- Project is “ready to go”/planning work is done
- Project supports personalization of instruction
- Impacts are sustainable or supportable by long-term funding
- Commitment to share learning/excellent data usage

2. Additional Criteria for “Deep Dive” (i.e. community specific) Projects of Regional Significance

- Strong family engagement
- Solid plans for extended learning time (in-school and/or via partnership)
- Strong strategies in place to achieve in-school excellence
- Potential for scalability

Foundational Elements

(P1) Regional Investment Fund to Support Educator and Leadership Capacity Building. This project focuses on improving ELL, math, and science student achievement at the elementary, middle, and high school levels through personalization of instruction, with an emphasis on ELL and academic language support in the elementary grades. These foundational investments will support regional priorities such as STEM and college and career readiness.

These systemic improvements will be accomplished through locally-developed district proposals. District proposals will be submitted to the Road Map District Consortium Executive Committee, pursuant to specific criteria. Proposals must:

- Meet local needs and *move us forward as region* over the four-year grant period.
- Focus on improving academic performance of ELL students or math and science instruction, with priority given to our region's high need schools.
- Invest in mastery of the new Common Core State Standards and Next Generation Science Standards, including project-based and hands-on learning. Professional Development will include successful Common Core and Next Generation Science Standards implementation, aligned with college and career readiness. There will be a focus on ELL and academic language support for previous ELL students.
- Demonstrate how they plan to leverage existing resources.

The fund will invest in supporting the capacity building of both teachers and principals, with a priority for those working in high needs schools, as developing strong principal leadership can help sustain gains generated through professional development investments in instructional excellence. The examples below represent desirable programmatic investments.

- **Examples Focused on Building Core Instructional Strengths of Teachers and Expanding Principal Leadership Training Opportunities**
 - Increasing the number of educators with specialized instructional and content area training and/or endorsements in ELL, math, and/or science.
 - High quality teacher induction programs.
 - Skill development for para-professionals focused on ELL and/or math instruction.
 - Development of Professional Learning Communities—focused on math, science and ELL to build capacity for differentiation and personalization of instruction.
 - Creating opportunities for teachers to move into leadership roles while staying in the classroom, potentially modeled after Auburn's Teacher Leader Academy or Seattle's Career Ladders.
 - Plans for providing teachers and principals with the best diagnostic tools and techniques to advance their ability to differentiate instruction.
 - Principal Leadership training investments could be modeled after Highline's current partnership with the Center for Educational Leadership at the UW.
 - The development of Professional Learning Communities to scale and sustain capacity enhancements.

- (C) **Teacher, Principal, and Superintendent Evaluations.** Relying on our statewide commitment under ESB 5895, districts will commit to implementing more comprehensive teacher, principal, and superintendent evaluations by the 2014-15 school year, incorporating student outcomes as an evaluative criteria.
- (C) **Strong Implementation of Common Core.** Districts will align curriculum, classroom instruction and assessments with the Common Core State Standards, with full implementation by 2014, to contribute to college and career readiness. This commitment from districts will be supported through the teaching and leadership capacity building modules above.
- (P2) **Develop Common Regional Data Portal and Data Sharing Agreements.** Given the high mobility of students, a region-wide system is needed that would enable critical student information data to follow students when they move. The system will allow districts and community-based organizations that serve students to access the data in a FERPA compliant manner. [Proposal Lead = TBD]

Start Strong

PreK-3rd System Building

- (C) **Summer reading plans for high-needs areas.** All Title I Elementaries/Early Learning Providers will develop a personalized summer reading plan for each student. Each school will have a community summer reading resource partner. This is in conjunction with our region's participation in the National Campaign for Grade Level Reading.
- (P3) **Adopt a Robust PreK-3rd Approach.** Across the region, we will build upon the success that Auburn has had by building community PreK-3rd networks in each district. We will use the UW/Harvard pre-K to 3rd grade planning tool as a guide and build upon the State's winning Race to the Top early learning grant. [Proposal Lead = PSED; with Auburn as technical advisor]
 - (P3A) **Regional System Building.** We will establish a regional framework for PreK-3rd system building, as well as supports for regional planning, coordination, and project management. We will invest in defining, tracking and using data regionally. Recognizing that each district is at a very different starting place, the grant will allow each district to receive assistance from an expert team and to develop an appropriate PreK-3rd system building plan.
 - (P3B) **Investment Fund to Build PreK-3rd Systems at the Community Level.** Districts may then apply through a proposal process for project specific funding in line with their PreK-3rd system building plan and the regional framework. Projects may focus on building a partnership between early learning providers and primary grades, capacity building of PreK providers, aligning their curriculum with primary grade Common Core standards, data connections that allow evaluation of early learning effectiveness, the use of adaptive online learning tools, family engagement, a PreK jumpstart intervention for children who need additional preparation before starting kindergarten, etc.
- (DD) **Intensive School and Community Partnerships to Turn Around Academic Performance in High Needs Elementary Schools.** Target low-performing, high need elementary schools and create 24/7 community learning systems and dramatic academic improvements through coordinated school/community partnerships, and family engagement. The King County Housing Authority is committed to working in partnership with the Consortium to reduce the detrimental impacts of mobility. Begin with two initial projects and encourage other districts to apply for funding in later phases of the grant:

- (DD1) **Kent East Hill – Kent School District and King County Housing Authority.** Invest in a comprehensive 24/7 community learning system effort in partnership with KCHA, supporting their Read to Succeed, birth-to-3rd grade reading program. Support for family engagement will be a strong focus of this project. Projects could also include the UW Urban Teacher Residency Program and/or intensive math and science professional development based on UW's success at Lakeridge Elementary in Renton).

[Proposal Lead = Kent]

- (DD2) **White Center Partnership – Highline School District and King County Housing Authority.** Invest in a comprehensive 24/7 learning system effort in partnership with KCHA, White Center Promise, Educare, and other service providers. Support for family engagement, language instruction and personalized service referrals will be a strong focus of this project. Projects could include the UW Urban Teacher Residency Program, intensive math and science professional development based on UW's success at Lakeridge Elementary in Renton, KCHA, Educare and other service providers.

[Proposal Lead = Highline]

- (DD3+) **Additional Schools TBD.** Additional projects in other districts would be phased in over the grant as site-based partnerships with housing authorities and others are ready. These additional schools would be in areas with housing authority partnership opportunities that would address students in poverty and those who need English language support. These projects will invest in a comprehensive 24/7 learning system effort, support family engagement, language instruction and personalized service referrals. Projects could include the UW Urban Teacher Residency Program, intensive math and science professional development based on UW's success at Lakeridge Elementary in Renton, KCHA, Educare and other service providers.

STEM Strong

- (P4) **Expand the Use of Digital STEM Tools to Personalize Instruction.** Expand the use of online STEM tools such as ST Math, currently being used by Highline, Seattle, and Kent School Districts for kindergarten through pre-algebra. These tools will personalize children's math instruction level and adapt teaching approaches to match contemporary learning patterns of students accustomed to digital, adaptive technologies. The tools also minimize requirements for English language skills and can serve as a mechanism for family engagement. They can help with remediation and with acceleration of students to higher levels of math. MOUs would be developed to ensure afterschool providers could also use it during homework time. This would require a commitment by districts to fund beyond the grant timeline, although much of the up-front purchase cost will be covered by the grant.

[Proposal Lead = Highline]

Expand Career Awareness, Especially STEM-based Opportunities. Improve career awareness, through online tools and career awareness experiences such as guest speakers, site visits, internships, or job shadowing. Focus on STEM job awareness in the elementary levels and internships at the middle and high school levels to prepare students to enter our regional STEM workforce. For elementary students, purchase and use software that introduces students to different STEM careers and the academic path they need to take to get there. In middle and high school, create experiences that expose students to professionals in STEM industries and include off-site visits to professional locations or college campuses. Additionally, the grant funding will assist in the design and utilization of a career awareness system.

[Proposal Lead = PSED]

Adopt and Implement Next Generation Science Standards. Position the Road Map region to be a national leader in adoption of Next Generation science standards, including a focus on expanding project-based learning/hands-on models, team-based learning, and aligning science instruction across the region with these standards. Professional development of teachers and leadership will support adoption and implementation of these standards. This commitment has both Start Strong and Stay Strong components. [Potential partners: ISB, SBI, UW] [\[Proposal Lead = Federal Way\]](#)

Stay Strong

Achieve College and Career Readiness System-wide

(P5) Student Engagement, Assessment, and Counseling

Invest in an Integrated System of Middle and High School Counseling and Advising. Take a systems approach to supporting and strengthening the effectiveness of middle and high school counselors via professional development, the use of data and the full suite of College Board Assessments (per Project 6.B), and building bridges between grade levels. Counselors will receive training in how to personalize and develop appropriate college and career advising to ensure that they will be better equipped to address both college and vocational aspirations. Expansion of the Dream Project, a student-initiated college-access and retention program that partners UW students with first-generation and low-income students in high schools, to assist in the college admissions process (including SAT prep, applications, writing essays, applying for financial aid, and finding scholarships) [depts.washington.edu/uwdrmpj/]. Have well trained Dream Project Counselor Assistants work in high-need middle and high schools to support counselors. [\[Proposal Lead = UW Dream Project\]](#)

(P5.A) Adopt the College Board Assessment System. Adopt the full suite of College Board assessments, including ReadinessStep (a college and career planning tool for students) in 8th grade and PSAT and SAT, in-class, at no charge for all students. ReadinessStep results will inform course and career planning, while completion of the PSAT and SAT will support student college readiness and district planning. Use of the AP Potential software, which comes bundled with the PSAT, will identify students likely to succeed in AP classes (see P7, below). This project would require a commitment by districts to fund beyond the grant timeline.

(C) Support Advised Completion of the High School and Beyond Plan in 8th Grade and use Plans to inform high school course offerings. Complete the High School and Beyond Plan in 8th grade and provide the counseling support needed, through professional development and Dream Project Counselor Assistant interns. Districts would commit to use the information to influence High School course offerings. The plans will be informed by ReadinessStep and require expanded family involvement. Funds may be used to increase professional development of counselors as well as assisting the Dream Project to expand to middle school, with high school counselors encouraged to partner with their feeder middle school counselors. The region will explore mechanisms to ensure the High School and Beyond Plan becomes part of the portable data repository to be associated with each student. Tukwila currently stores Plans in “Homeroom” software.

- (P6) **Investment Fund to Increase Access to Courses that Deliver College & Career Readiness.** Expand access to AP, IB, and College in the High School programs through locally developed district plans submitted via a competitive proposal development process. Winning projects will leverage local resources and may be required to include a local funding match. District plans could include increasing course offerings, increasing the number of certified teachers, prioritizing STEM-related CTE, particularly hands-on courses, and offering more online AP courses regionally, as well as competency based world languages appropriate for ELL students.

[Proposal Lead = Federal Way for online AP]

- (C) **Double the number of students across the region who complete algebra or higher by 8th grade.** Investments in teacher and leadership capacity will support this goal.

BUDGET ALLOCATIONS BY PROJECT TYPE – WORKING DRAFT

The figures below are preliminary estimates of funding allocations by project and project category. These figures were developed iteratively, using a bottom-up (cost-based) and top-down (priority-based) approach. We expect these estimates to change as project details are firmed up over the remaining application development process.

Foundational		9,000,000	23%
P1	Regional Investment Fund to Support Educator & Leadership Capacity Building	7,000,000	
P2	Develop a Common Regional Data Portal & Data Sharing Agreements	2,000,000	
Start Strong: PreK-3rd		10,000,000	25%
P3	Adopt a Robust PreK-3rd Approach	6,000,000	
P3A	Regional System-Building		
P3B	Investment Fund		
DD	Intensive School & Community Partnerships to Turn Around Academic Performance in High Needs Elementary Schools	4,000,000	
DD1	Kent East Hill-Kent School District & King County Housing Authority & other partners		
DD2	White Center Partnership—Highline Public Schools/King County Housing Authority/White Center Promise		
DD3+	TBD—Other school and community partnerships		
STEM Strong		5,000,000	13%
P4	Expand the Use of Digital STEM Tools to Personalize Instruction	4,000,000	
P5	Expand Career Awareness, Especially STEM-based Opportunities	1,000,000	
Stay Strong: College & Career Readiness		10,250,000	26%
P6	Student Engagement, Assessment, & Counseling		
P6A	Invest in an Integrated System of Middle & High School Counseling & Advising	3,500,000	
P6B	Adopt the College Board Assessment System	3,000,000	
P7	Investment Fund to Increase Access to Courses that Deliver College & Career Readiness.	3,750,000	
Project Management, Evaluation, & Administration		5,750,000	14%
P0	Project Management & Oversight	1,500,000	
	Evaluation	750,000	
	Indirect Costs (includes funding for PSESD & districts as appropriate)	3,500,000	9%
TOTAL		40,000,000	100%

GOVERNANCE STRUCTURE AND DECISION MAKING PROCESS – WORKING DRAFT

An Executive Committee will be established to oversee implementation of the grant and make investment decisions on behalf of the region. Signers of the Consortium MOU (school board presidents, education association presidents, and superintendents) will vote to elect members to the following seats, with Executive Committee members charged with communicating with their peers and constituents on an ongoing basis:

- Two district management leaders: one superintendent or designee and one building level administrator
- Two representatives of union leadership,
- Two at large members representing community partners.
- The PSESD superintendent will be an automatic member of the Executive Committee.

Duties of the Executive Committee will include the following:

- Grant oversight, support, and compliance;
- Establish and execute a strong consortium conflict of interest policy;
- Establish appropriate competitive Request for Proposal (RFP) criteria and processes for procurement and subgranting that ensure rigorous proposal review and sound investment decisions;
- Establish rigorous leverage and sustainability requirements for all consortium investments;
- Approval of subgrants and awards made via competitive process;
- In cases where districts would be required to develop proposals to access categories of funds where line item level specificity is not noted in the proposal budget, the Executive Committee will require evidence of Education Association involvement in such proposal development.
- Reviewing and approving all grant fiscal and performance monitoring and reporting;
- Considering appropriate course corrections based on initial year(s) grant performance;
- Ensuring transparency by extensive public reporting and sharing of results and best practice findings.

As the Lead LEA applying for the grant on behalf of the Roadmap Project Region, the Puget Sound Educational Services District (PSESD) will function as the ongoing project manager for the effort. PSESD's responsibilities in this role will include:

- Managing all projects and funds associated with the RTT-D award.
- Managing performance management and evaluation efforts.
- Serving as fiscal agent on behalf of the Consortium.

HIGH SCHOOL GRADUATION REQUIREMENTS (DRAFT 8/13/12)

- A. The board ~~shall~~ **will** award a regular high school diploma to every student enrolled in the district who meets the requirements of graduation established by the district. Only one diploma ~~shall~~ **will** be awarded with no distinctions being made between the various programs of instruction which may have been pursued.

The board ~~shall~~ **will** establish graduation requirements which, **as a minimum**, satisfy those established by the State Board of Education:

English (reading, writing and communications)	4 credits
Mathematics	3 credits
Science (physical, life and earth; one laboratory credit)	2 credits
Social Studies (civics, history and geography)	2.5 credits
Health and Fitness	2 credits
Arts	1 credit
Occupational Education	1 credit
Electives	7 credits

TOTAL: 22.5 credits

Subject	Class of 2013-15 Minimum State Credit Requirements	Class of 2016 Minimum State Credit Requirements (unless district has filed an extension with the State Board of Education for Class of 2018)
English	3	4
Mathematics	3	3
Science (including 1 lab credit)	2	2
Social Studies	2.5	3
Health and Fitness	2	.5 credit health; 1.5 credit fitness
Arts	1	1
Occupational Education	1	1
Electives	5.5	4
Total State Credit Requirements	20	20
District Requirement:		
District Requirement:		
District Requirement:		
Total State and District Credit Requirements		

~~A credit is defined as 150 hours of planned instructional activities excluding passing time. The board shall will approve additional graduation requirements as recommended by the superintendent.~~

In addition to the minimum credit requirements, to earn a diploma each student must:

1. Pass the reading and writing portions of the statewide assessment;
 2. Complete a High School and Beyond Plan: Within the first year of high school enrollment, each student ~~shall~~ **will** develop a plan for satisfying the state and district's high school graduation requirements and for their first year after high school completion. The plan should be developed in collaboration with the student, parent and district staff. The plan should include how the student will satisfy the district's academic credit requirements, preparation for successfully completing the ~~Washington Assessment of Student Learning~~ **statewide assessment**, a description of the student's culminating project and the student's goals for the year following graduation. Each student plan should be reviewed annually at the beginning of the school year to assess student progress, to adjust the plan, and to advise the student on steps necessary for successful completion of the plan;
 3. Complete a Culminating Project: During the course of their high school career, each student shall complete a culminating project. The project ~~shall~~ **will** demonstrate the student's ability to think analytically, logically and creatively, and to integrate experience and knowledge to form reasoned judgments and solve problems. The project will also have a connection to the world of work in that it will demonstrate that the student understands the importance of work and how performance, effort, and decisions directly affect future career and educational opportunities;
 4. Complete math requirements: ~~Students in the class of 2009-12 who fail to successfully pass the mathematics portion of the statewide assessment or an appropriate alternative, must earn two mathematics credits or career and technical education equivalent mathematics credits after 10th grade. Credits earned must meet high school standards. Students in the classes of 2013 and beyond 2014 must pass the mathematics portion of the statewide assessment, an alternative assessment, or an end of course examination; and one end of course assessment (either Algebra 1 or Geometry or their integrated math equivalents) or state-approved alternative. Students in the classes of 2015 and beyond must pass two end of course assessments (Algebra I and Geometry or their integrated math equivalents) or state-approved alternative.~~
 5. Complete science requirements: Students in the class of ~~2013~~ **2015** and beyond must pass the ~~science statewide~~ **biology end-of-course** assessment or an ~~appropriate~~ **state-approved** alternative.
- B. Students in the class of 2013 and beyond must complete mathematics courses in one of the following progressive sequences.
1. Algebra I, Geometry, and Algebra II; or
 2. Integrated Mathematics I, Integrated Mathematics II, and Integrated Mathematics III; or

3. Any combination of (a) and (b) in progressive sequence.

In lieu of a third credit of mathematics, students may choose an alternative mathematics course if the parent/guardian agrees that the third credit mathematics elective is supportive of the student's education and career goals. Before approval of the elective third mathematics credit, a meeting will be held with the student, the parent/guardian, and the school staff to discuss the student's High School and Beyond Plan and the mathematics requirements for post-secondary and career choices.

The district will obtain a signed consent from the parent for the student to enroll in the alternative third credit of mathematics. The consent form will confirm the meeting, that the parent understands the impact of the selection on the student's educational and employment options, and that the alternative is most appropriate for the needs of the student.

Students may also satisfy the mathematics requirements by earning equivalency based credit in career and technical education mathematics courses. Those credits must be recorded using the equivalent academic high school department designation.

- C. A student will receive a certificate of academic achievement only if they earn the appropriate number of credits required by the district, complete a culminating project, complete the high school and beyond plan; and meet the reading, writing and math standards on the high school statewide assessment or an appropriate alternative assessment.

~~Students qualifying for special education services will earn a certificate of individual achievement as determined by their individual education plan.~~ **Students qualifying for special education services who receive modifications to graduation requirements, as determined by their individual education plan, will earn a certificate of individual achievement.**

- D. **High school credit will be awarded for successful completion of a specified unit of study. In this district, successful completion of a specified unit of study means:**

1. **Earning a passing grade according to the district's grading policy; and/or**
2. **Demonstrating proficiency/mastery of content standards as determined by the district; and/or**
3. **Successfully completing an established number of hours of planned instructional activities to be determined by the district.**

The district will establish a process for determining proficiency/mastery for credit-bearing course of study.

- DE. The superintendent ~~shall~~ **will** develop procedures for implementing this policy which include:

1. Establishment of the process and assessment criteria for the high school culminating project requirements, and determination of the education plan process for identifying competencies.

2. Establishing the process for completion of the High School and Beyond Plan.
3. Recommending course and credit requirements which satisfy the State Board of Education requirements and recognize the expectations of the citizens of the district.
4. Determining which courses satisfy particular subject area requirements and whether a particular course may satisfy more than one subject area requirement, including a process for determining the credits, the district will recognize for courses taken through another program recognized by the state (**e.g.** another public school district **or** an approved private school) or those courses taken by students moving into the state from another state or country. Decisions regarding the recognition of credits earned before enrolling in the district will be based on the professional judgment of the high school principal or designee based on an evaluation of the student's former program and demonstrated knowledge and skills in the discipline for which credit is sought. ~~The decision of the principal may be appealed to the superintendent within fifteen school days.~~
5. Making graduation requirements available in writing to students, parents, and members of the public.
6. Providing for a waiver of graduation requirements for an individual student when permitted. All state graduation requirements must be satisfied unless a waiver is permitted by law.
7. Granting credit for learning experiences conducted away from school, including National Guard high school career training.
8. Granting credit for correspondence, vocational-technical institutes ,and/or college courses for college or university course work the district has agreed to accept for high school credit,. Sstate law requires that the district award one high school credit for every five quarter hour credit or three semester hour credit successfully earned through a college or university, except for community college high school completion programs where the district awards the diploma;. Ttenth and eleventh grade students and their parents ~~shall~~ **will** be notified annually of the Running Start Program.
9. Granting credit for work experience.
10. Granting credit based upon competence testing in lieu of enrollment.
11. Granting credit for high school courses completed before a student attended high school, to the extent that the course work exceeded the requirements for seventh or eighth grade.
12. Counseling of students to know what is expected of them ~~for completion of their schooling~~ **in order to graduate**.
13. Preparing a list of all graduating students for the information of the board and release to the public.
14. Preparing suitable diplomas and final transcripts for graduating seniors.

15. Planning and executing graduation ceremonies.
16. Developing student learning plans for students who are not successful on one or more components of the statewide assessment.

In the event minimum test requirements are adopted by the board, a student who **qualifies for special education services** ~~possesses a disability shall will~~ **may** satisfy those competency requirements which are incorporated into the Individualized Education Program (IEP). Satisfactory completion of the objectives incorporated into the IEP ~~shall will~~ serve as the basis for determining completion of a course.

A student ~~shall will~~ be issued a diploma after completing the district's requirements for graduation. In lieu of the certificate of academic achievement, special education students may earn a certificate of individual achievement. A student ~~shall will~~ also be advised that he/she may receive a final transcript.

~~However, a student's diploma or transcript may be withheld until the student pays for any school property that has been lost or willfully damaged. Upon payment for damages or the equivalency through voluntary work, the diploma or transcript will be released. When the damages or fines do not exceed \$100, the student or his/her parents shall will have the right to an appeal using the same process as used for short term suspension as defined in Policy 3241, Classroom Management, Corrective Actions or Punishments. When damages are in excess of \$100, the appeal process for long term suspension as defined in Policy 3241, Classroom Management, Corrective Actions or Punishments shall will apply.~~

Graduation requirements in effect when a student first enrolls in high school ~~shall will~~ be in effect until that student graduates unless such period is in excess of ten years.

~~In the event that other forms of corrective actions are imposed for violations of school rules, the student may be denied participation in graduation ceremonies. Such exclusion shall be regarded as a school suspension. In such instances, the diploma will be granted.~~

Cross References:	Board Policy 3110	Qualifications of Attendance and Placement
	Board Policy 3241	Classroom Management, Corrective Actions or Punishment
	Board Policy 3520	Student Fees, Fines and Charges
Legal References	RCW 28A.230.090	High school graduation requirements or equivalencies — Reevaluation of graduation requirements — Review and authorization of proposed changes -- Credit for courses taken before attending high school — Postsecondary credit equivalencies
	RCW 28A.230.120	High school diplomas — Issuance — Option to receive final transcripts — Notice
	RCW 28A.600.300-400	Running start program
	RCW 28A.635.060	Defacing or injuring school property — Liability of pupil, parent or guardian — Withholding

	grades, diploma, or transcripts — Suspension and restitution — Voluntary work program as alternative — Rights protected
WAC 392-410	Courses of studies and equivalencies
WAC 180-51	High school graduation requirements
WAC 392-348	Secondary Education
WAC 392-121-182	Alternative Learning Experience Requirements
WAC 392-169	Special service programs running start program

Management Resources:

Policy News, April 2012	State Board of Education revises credit requirements for graduation
Policy News, October 2011	Policy manual revisions
<i>Policy News</i> , June 2010	High School Proficiency Examination
<i>Policy News</i> , April 2009	High School Graduation Requirements (Class of 2009)
<i>Policy News</i> , February 2009	High School Graduation Requirements
<i>Policy News</i> , August 2007	Graduation Requirements Modified by Legislature
<i>Policy News</i> , October 2004	Graduation Requirements: High School and Beyond Plans
<i>Policy News</i> , February 2004	High School Graduation Requirements
<i>Policy News</i> , December 2000	2004 High School Graduation Requirements Adopted
<i>Policy News</i> , April 1999	Variations Complicate College Credit Equivalencies

Adoption Date: 06.24.96
Auburn School District
Revised: 11.24.03; 11.08.10